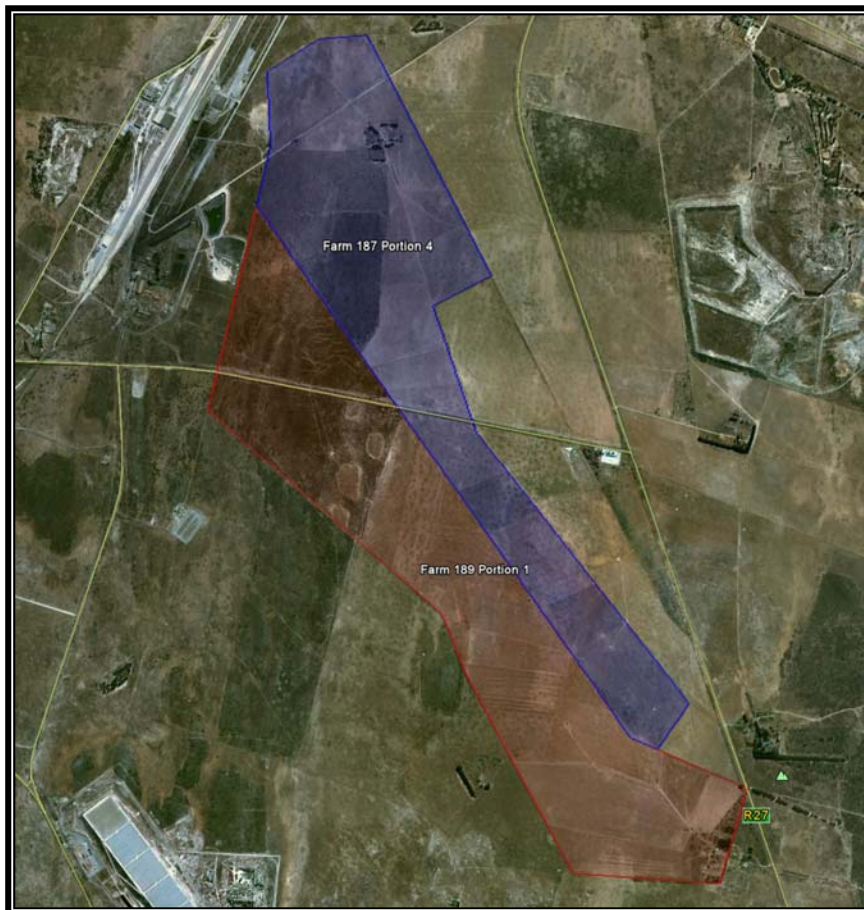


Creative-Renewable-Energy-Solutions (Pty) Ltd

## **NOISE IMPACT ASSESSMENT**

### **FOR SCOPING PURPOSES**

**Establishment of the Uyekraal Wind Energy Facility  
near the town of Vredenburg, Western Cape**



Study done for:



M<sup>2</sup> Environmental Connections cc  
P.O. Box 2047  
Garsfontein East  
0060  
Tel: 012 – 993 2165  
Fax: 086 – 621 0292  
E-mail: morne@menco.co.za



**Title:**

Noise Impact Assessment for Scoping purposes: Establishment of the Uyekraal Wind Energy Facility near the town of Vredenburg, Western Cape.

**Client:**

Savannah Environmental (Pty) Ltd  
for  
CRENERSOL (Pty) Ltd

PO BOX 148  
Sunninghill  
Gauteng  
2157

**Report no:**

CRES-UK/SNR/102010-Rev 0

**Authors:**

*M. de Jager* (B. Ing (Chem))

**Review:**

*Johan Maré* (M. Sc., Pr.Sci.Nat)

**DATE:**

October 2010

## **COPYRIGHT WARNING**

This information is privileged and confidential in nature and unauthorized dissemination or copying is prohibited. This information will be updated as required. Creative Renewable Energy Solutions (Pty) Ltd claims protection of this information in terms of the Promotion of Access to Information Act, (No 2 of 2002) and without limiting this claim, especially the protection afforded by Chapter 4.

The document is the property of M2 Environmental Connections CC. The content, including format, manner of presentation, ideas, technical procedure, technique and any attached appendices are subject to copyright in terms of the Copyright Act 98 of 1978 (as amended by the respective Copyright Amendment Acts No. 56 of 1980, No. 66 of 1983, No. 52 of 1984, No. 39 of 1986, No. 13 of 1988, No. 61 of 1989, No. 125 of 1992, Intellectual Property Laws Amendment Act, No. 38 of 1997 and, No. 9 of 2002) in terms of section 6 of the aforesaid Act, and may only be reproduced as part of the Environmental Impact Assessment process by Savannah Environmental (Pty) Ltd.



## **TABLE OF CONTENTS**

	Page
<b>1 INTRODUCTION .....</b>	<b>11</b>
1.1 Introduction and Purpose .....	11
1.2 Brief Project Description .....	11
1.3 Project Location.....	11
1.4 Terms of Reference .....	12
1.5 Study area.....	13
1.6 Available Information .....	14
1.7 Potential sensitive receptors.....	14
<b>2 POLICIES AND THE LEGAL CONTEXT .....</b>	<b>16</b>
2.1 The Republic of South Africa Constitution Act (“the Constitution”).....	16
2.2 The Environment Conservation Act.....	16
2.3 The National Environmental Management Act .....	16
2.4 National Environmental Management: Air Quality Act (“AQA”).....	17
2.5 Noise Control Regulations .....	17
2.6 Draft model Air Quality Management By-law for adoption and adaptation by Municipalities.....	18
2.7 Noise Standards .....	18
<b>3 POTENTIAL NOISE SOURCES.....</b>	<b>20</b>
3.1 Potential Noise Sources: Construction Phase.....	20
3.1.1 Construction equipment.....	20
3.1.2 Material supply: Concrete batching plants and use of Borrow Pits.....	21
3.1.3 Blasting.....	21
3.1.4 Traffic .....	21
3.2 Potential Noise Sources: Operational Phase .....	22
3.2.1 Wind Turbine Noise: Aerodynamic sources.....	22
3.2.2 Wind Turbine: Mechanical sources .....	23
3.2.3 Transformer noises (Sub-stations).....	24
3.2.4 Transmission Line Noise (Corona noise) .....	24
3.2.5 Low Frequency Noise.....	25
3.2.6 Amplitude modulation.....	27



<b>4 METHODOLOGY: CALCULATION OF FUTURE NOISE EMISSIONS DUE TO PROPOSED PROJECT .....</b>	<b>29</b>
4.1 Measurement Procedure .....	29
4.2 Noise emissions into the surrounding Environment .....	29
<b>5 METHODOLOGY: NOISE IMPACT ASSESSMENT AND SIGNIFICANCE.....</b>	<b>31</b>
5.1 Difference between Sound and Noise.....	31
5.2 Impact Assessment Criteria.....	32
5.2.1 <i>Overview: The common characteristics</i> .....	32
5.2.2 <i>Noise criteria of concern</i> .....	32
5.2.3 <i>Determining appropriate Zone Sound Levels</i> .....	34
5.2.4 <i>Determining the Significance of the Noise Impact</i> .....	36
5.2.5 <i>Identifying the Potential Impacts without Mitigation Measures (WOM)</i> .....	38
5.2.6 <i>Identifying the Potential Impacts with Mitigation Measures (WM)</i> .....	39
5.3 Expression of the noise Impacts.....	39
<b>6 RESULTS AND PRELIMINARY IMPACT ASSESSMENT.....</b>	<b>41</b>
6.1 Construction phase .....	41
6.2 Operational Phase: Estimated Impact and Important Concepts.....	41
6.2.1 <i>One Wind Turbine operating</i> .....	42
6.2.2 <i>Five (5) Wind Turbines</i> .....	43
6.2.3 <i>13 Wind Turbines in one line</i> .....	44
6.2.4 <i>Estimation of Impacts</i> .....	46
<b>7 CONCLUSIONS.....</b>	<b>48</b>
<b>8 RECOMMENDATIONS .....</b>	<b>49</b>
<b>9 THE AUTHOR .....</b>	<b>50</b>
<b>10 REFERENCES .....</b>	<b>51</b>



## **LIST OF TABLES**

	<b>page</b>
Table 5.1: Acceptable Zone Sound Levels for noise in districts (SANS 10103) .....	34
Table 5.2: Impact Assessment Criteria .....	37
Table 5.3: Assessment Criteria: Ranking Scales .....	38
Table 6.1: Preliminary Impact Estimation: Operational Phase .....	46

## **LIST OF FIGURES**

	<b>page</b>
Figure 1-1: Site map indicating locations of the various portions proposed to be used for the Uyekraal wind Energy Facility	14
Figure 1-2: Topographical map indicating potentially sensitive receptors	15
Figure 3-1: Examples on A-weighted low frequency levels $L_{pA,LF}$ from a number of indoor and outdoor sources.	27
Figure 5-1: Criteria to assess the significance of impacts stemming from noise	33
Figure 5-2: Background noise measurements and noise criteria curve considering wind speeds	36
Figure 6-1: One WTG operating, worst case scenario	42
Figure 6-2: One WTG operating, more realistic scenario	43
Figure 6-3: 5 WTGs operating, worst case scenario	44
Figure 6-4: 5 WTGs operating, more realistic case scenario	44
Figure 6-5: 13 WTGs operating, WTGs in one line on 500 m X-axes, worst case scenario	45
Figure 6-6: 13 WTGs operating. WTGs in one line on 500 m X-axes, more realistic case scenario	45



## **GLOSSARY OF ABBREVIATIONS**

DEADP	Department of Environmental Affairs and Development Planning
DEA	Department of Environmental Affairs
EAP	Environmental Assessment Practitioner
ECA	Environment Conservation Act (Act 78 of 1989)
ECO	Environmental Control Officer
EIA	Environmental Impact Assessment
EMP	Environmental Management Plan
EMS	Environmental Management System
FEL	Front End Loader
IAPs	Interested and Affected Parties
i.e.	that is
IEM	Integrated Environmental Management
km	kilometres
LHD	Load haul dumper
m	Meters (measurement of distance)
m <sup>2</sup>	Square meter
m <sup>3</sup>	Cubic meter
mamsl	Meters above mean sea level
MENCO	M <sup>2</sup> Environmental Connections cc
NEMA	National Environmental Management Act, 1998 (Act 107 of 1998)
NCR	Noise Control Regulations (under Section 25 of the ECA)
NGO	Non-government Organisation
PPE	Personal Protective Equipment
PPP	Public Participation Process
SABS	South African Bureau of Standards
SANS	South African National Standards
SHEQ	Safety Health Environment and Quality
WEF	Wind Energy Facility
WHO	World Health Organisation
WTG	Wind Turbine Generator



## **GLOSSARY OF TERMS**

<i>1/3-Octave Band</i>	A filter with a bandwidth of one-third of an octave representing four semitones, or notes on the musical scale. This relationship is applied to both the width of the band, and the centre frequency of the band. See also definition of octave band.
<i>A – Weighting</i>	An internationally standardised frequency weighting which approximates the frequency response of the human ear and gives an objective reading, which therefore agrees with the subjective human response to that sound.
<i>Air Absorption</i>	The phenomena of attenuation of sound waves with distance propagated in air, due to dissipative interaction within the gas molecules.
<i>Alternatives</i>	A possible course of action, in place of another, that would meet the same purpose and need (of proposal). Alternatives can refer to any of the following but are not limited hereto: alternative sites for development, alternative site layouts, alternative designs, alternative processes and materials. In Integrated Environmental Management the so-called “no go” alternative refers to the option of not allowing the development and may also require investigation in certain circumstances.
<i>Ambient</i>	The conditions surrounding an organism or area.
<i>Ambient Noise</i>	The all-encompassing sound at a point being composed of sounds from many sources both near and far. It includes the noise from the noise source under investigation.
<i>Ambient Sound</i>	The all-encompassing sound at a point being composite of sounds from near and far.
<i>Ambient Sound Level</i>	Means the reading on an integrating impulse sound level meter taken at a measuring point in the absence of any alleged disturbing noise at the end of a total period of at least 10 minutes after such a meter was put into operation. In this report the term Background Ambient Sound Level will be used.
<i>Amplitude Modulated Sound</i>	A sound which noticeably fluctuates in loudness over time.
<i>Applicant</i>	Any person who applies for an authorisation to undertake a listed activity or to cause such activity in terms of the relevant environmental legislation.
<i>Assessment</i>	The process of collecting, organising, analysing, interpreting and communicating data that is relevant to some decision.
<i>Audible Frequency Range</i>	Generally assumed to be the range from about 20 Hz to 20,000 Hz, the range of frequencies which our ears perceive as sound.
<i>Background Ambient Sound Level</i>	The level of the ambient sound indicated on a sound level meter in the absence of the sound under investigation (e.g. sound from a particular noise source or sound generated for test purposes). Ambient sound level as per Noise Control Regulations.
<i>C-Weighting</i>	This is an international standard filter, which can be applied to a pressure signal or to a <i>SPL</i> or <i>PWL</i> spectrum, and which is essentially a pass-band filter in the frequency range of approximately 63 to 4000 Hz. This filter provides a more constant, flatter, frequency response, providing significantly less adjustment than the A-scale filter for frequencies less than 1000 Hz.
<i>dB(A)</i>	Sound Pressure Level in decibel which has been A-weighted, or filtered, to match the response of the human ear.
<i>Decibel (db)</i>	A logarithmic scale for sound corresponding to a multiple of 10 of the threshold of hearing. Decibels for sound levels in air are referenced to an atmospheric pressure of 20 $\mu$ Pa.
<i>Diffraction</i>	Modification of the progressive wave distribution due to the presence of obstacles in the field. Reflection and refraction are special cases of diffraction.
<i>Direction of Propagation</i>	The direction of flow of energy associated with a wave.
<i>Disturbing noise</i>	Means 'n noise level which exceeds the zone sound level or, if no zone sound



	level has been designated, a noise level which exceeds the ambient sound level at the same measuring point by 7 dBA or more.
<i>Environment</i>	The external circumstances, conditions and objects that affect the existence and development of an individual, organism or group; these circumstances include biophysical, social, economic, historical, cultural and political aspects.
<i>Environmental Control Officer</i>	Independent officer employed by the applicant to ensure the implementation of the Environmental Management Plan (EMP) and manage any further environmental issues that may arise.
<i>Environmental impact</i>	A change resulting from the effect of an activity on the environment, whether desirable or undesirable. Impacts may be the direct consequence of an organisation's activities or may be indirectly caused by them.
<i>Environmental Impact Assessment</i>	An Environmental Impact Assessment (EIA) refers to the process of identifying, predicting and assessing the potential positive and negative social, economic and biophysical impacts of any proposed project, plan, programme or policy which requires authorisation of permission by law and which may significantly affect the environment. The EIA includes an evaluation of alternatives, as well as recommendations for appropriate mitigation measures for minimising or avoiding negative impacts, measures for enhancing the positive aspects of the proposal, and environmental management and monitoring measures.
<i>Environmental issue</i>	A concern felt by one or more parties about some existing, potential or perceived environmental impact.
<i>Equivalent continuous A-weighted sound exposure level (<math>L_{Aeq,T}</math>)</i>	The value of the average A-weighted sound pressure level measured continuously within a reference time interval $T$ , which have the same mean-square sound pressure as a sound under consideration whose level varies with time.
<i>Equivalent continuous A-weighted rating level (<math>L_{Req,T}</math>)</i>	The Equivalent continuous A-weighted sound exposure level ( $L_{Aeq,T}$ ) to which various adjustments has been added. More commonly used as ( $L_{Req,d}$ ) over a time interval 06:00 – 22:00 ( $T=16$ hours) and ( $L_{Req,n}$ ) over a time interval of 22:00 – 06:00 ( $T=8$ hours).
<i>Footprint area</i>	Area to be used for the construction of the proposed development, which does not include the total study area.
<i>Frequency</i>	The rate of oscillation of a sound, measured in units of Hertz (Hz) or kilohertz (kHz). One hundred Hz is a rate of one hundred times per second. The frequency of a sound is the property perceived as pitch: a low-frequency sound (such as a bass note) oscillates at a relatively slow rate, and a high-frequency sound (such as a treble note) oscillates at a relatively high rate.
<i>Green field</i>	A parcel of land not previously developed beyond that of agriculture or forestry use; virgin land. The opposite of Greenfield is brownfield, which is a site previously developed and used by an enterprise, especially for a manufacturing or processing operation. The term brownfield suggests that an investigation should be made to determine if environmental damage exists.
<i>G-Weighting</i>	An International Standard filter used to represent the infrasonic components of a sound spectrum.
<i>Infrasound</i>	Sound with a frequency content below the threshold of hearing, generally held to be about 20 Hz. Infrasonic sound with sufficiently large amplitude can be perceived, and is both heard and felt as vibration. Natural sources of infrasound are waves, thunder and wind.
<i>Integrated Development Plan</i>	A participatory planning process aimed at developing a strategic development plan to guide and inform all planning, budgeting, management and decision-making in a Local Authority, in terms of the requirements of Chapter 5 of the Municipal Systems Act, 2000 (Act 32 of 2000).
<i>Integrated Environmental Management</i>	IEM provides an integrated approach for environmental assessment, management, and decision-making and to promote sustainable development and the equitable use of resources. Principles underlying IEM provide for a democratic, participatory, holistic, sustainable, equitable and accountable approach.



<i>Interested and affected parties</i>	Individuals or groups concerned with or affected by an activity and its consequences. These include the authorities, local communities, investors, work force, consumers, environmental interest groups and the general public.
<i>Key issue</i>	An issue raised during the Scoping process that has not received an adequate response and which requires further investigation before it can be resolved.
<i>Listed activities</i>	Development actions that is likely to result in significant environmental impacts as identified by the delegated authority (formerly the Minister of Environmental Affairs and Tourism) in terms of Section 21 of the Environment Conservation Act.
<i>Loudness</i>	The attribute of an auditory sensation which describes the listener's ranking of sound in terms of its audibility.
<i>Magnitude of impact</i>	Magnitude of impact means the combination of the intensity, duration and extent of an impact occurring.
<i>Masking</i>	The raising of a listener's threshold of hearing for a given sound due to the presence of another sound.
<i>Mitigation</i>	To cause to become less harsh or hostile.
<i>Negative impact</i>	A change that reduces the quality of the environment (for example, by reducing species diversity and the reproductive capacity of the ecosystem, by damaging health, or by causing nuisance).
<i>Noise</i>	a. Sound which a listener does not wish to hear (unwanted sounds). b. Sound from sources other than the one emitting the sound it is desired to receive, measure or record. c. A class of sound of an erratic, intermittent or statistically random nature.
<i>Noise Level</i>	The term used in lieu of sound level when the sound concerned is being measured or ranked for its undesirability in the contextual circumstances.
<i>Octave Band</i>	A filter with a bandwidth of one octave, or twelve semi-tones on the musical scale representing a doubling of frequency.
<i>Positive impact</i>	A change which improves the quality of life of affected people or the quality of the environment.
<i>Property</i>	Any piece of land indicated on a diagram or general plan approved by the Surveyor-General intended for registration as a separate unit in terms of the Deeds Registries Act and shall include an erf, a site and a farm portion as well as the buildings erected thereon
<i>Public Participation Process</i>	A process of involving the public in order to identify needs, address concerns, choose options, plan and monitor in terms of a proposed project, programme or development
<i>Reverberant Sound</i>	The sound in an enclosure excluding that which is received directly from the source.
<i>Reverberation</i>	The persistence, after emission of a sound has stopped, of a sound field within an enclosure.
<i>Significant Impact</i>	An impact can be deemed significant if consultation with the relevant authorities and other interested and affected parties, on the context and intensity of its effects, provide reasonable grounds for mitigating measures to be included in the environmental management report. The onus shall be on the applicant to include the relevant authorities and other interested and affected parties in the consultation process. Present and potential future, cumulative and synergistic effects should all be taken into account.
<i>Sound Level</i>	The level of the frequency weighted and time weighted sound pressure as determined by a sound level meter.
<i>Sound Power</i>	Of a source, the total sound energy radiated per unit time.
<i>Sound Pressure Level (SPL)</i>	Of a sound, 20 times the logarithm to the base 10 of the ratio of the RMS sound pressure level to the reference sound pressure level. International values for the reference sound pressure level are 20 micropascals in air and 100 millipascals in water. SPL is reported as $L_p$ in dB (not weighted) or in various other weightings.
<i>Soundscape</i>	Sound or combination of sounds that forms or arises from an immersive environment. The study of soundscape is the subject of acoustic ecology. The idea of soundscape refers to both the natural acoustic environment, consisting



of natural sounds, including animal vocalizations and, for instance, the sounds of weather and other natural elements; and environmental sounds created by humans, through musical composition, sound design, and other ordinary human activities including conversation, work, and sounds of mechanical origin resulting from use of industrial technology. The disruption of these acoustic environments results in noise pollution.

<i>Study area</i>		Refers to the entire study area encompassing all the alternative routes as indicated on the study area map.
<i>Sustainable Development</i>		Development that meets the needs of the present without compromising the ability of future generations to meet their own needs. It contains within it two key concepts: the concept of "needs", in particular the essential needs of the world's poor, to which overriding priority should be given; and the idea of limitations imposed by the state of technology and social organization on the environment's ability to meet present and the future needs (Brundtland Commission, 1987).
<i>Zone of Potential Influence</i>	<i>of</i>	The area defined as the radius about an object, or objects beyond which the noise impact will be insignificant.
<i>Zone Level</i>	<i>Sound</i>	Means a derived dBA value determined indirectly by means of a series of measurements, calculations or table readings and designated by a local authority for an area. This is similar to the Rating Level as defined in SANS10103.



## **1 INTRODUCTION**

### **1.1 INTRODUCTION AND PURPOSE**

M2 Environmental Connections was commissioned to undertake a specialist study to determine the potential noise impact on the surrounding environment due to the establishment of the Uyekraal Wind Energy Facility (WEF) on various farms close to the town of Vredenburg, Western Cape.

This report is the result of a first phase study (desktop) on the potential impact of such a facility on the surrounding environment, highlighting methodologies, potential issues to be investigated as well as preliminary findings and recommendations.

*It is important to note this document is only the Scoping Document, and little is yet known of the proposed Uyekraal Wind Energy Facility (WEF). Being preliminary, the report presents scenarios to illustrate important concepts.*

### **1.2 BRIEF PROJECT DESCRIPTION**

Creative-Renewable-Energy-Solutions (Pty) Ltd (hereafter referred as CRENERSOL) proposes the establishment of a wind energy facility and associated infrastructure on various farms near the town of Vredenburg, Western Cape. This facility will be known as the Uyekraal Wind Energy Facility. The broader study area is approximately 7 km<sup>2</sup>. The facility and associated infrastructure includes:

- Up to 22 wind turbines and associated foundations,
- Underground cables between the wind turbine generators,
- Up to two substations,
- 132 kV power line(s) linking to Eskom's existing Blouwater substation,
- A maintenance/control building; and
- Access Roads, into and between the turbines.

### **1.3 PROJECT LOCATION**

The wind energy facility is proposed on the following farms:

- Portion 4 of Farm Langeberg 187, and
- Portion 1 of Farm Uyekraal 189



#### **1.4 TERMS OF REFERENCE**

SANS 10328:2003 (Edition 2) specifies the methodology to assess the noise impacts on the environment due to a proposed activity that might impact on the environment. The standard also stipulates the minimum requirements to be investigated for Scoping purposes. These minimum requirements are:

1. The purpose of the investigation;
2. A brief description of the planned development or the changes that are being considered;
3. A brief description of the existing environment;
4. The identification of the noise sources that may affect the particular development, together with their respective estimated sound pressure levels or sound power levels (or both);
5. The identified noise sources that were not taken into account and the reasons why they were not investigated;
6. The identified noise-sensitive developments and the estimated impact on them;
7. Any assumptions made with regard to the estimated values used;
8. An explanation, either by a brief description or by reference, of the methods that were used to estimate the existing and predicted rating levels;
9. The location of the measurement or calculation points, i.e. a description, sketch or map;
10. Estimation of the noise impact;
11. Alternatives that were considered and the results of those that were investigated;
12. Conclusions that were reached;
13. Recommendations, i.e. if there could be a significant impact, or if more information is needed, a recommendation that an environmental noise impact assessment be conducted.

In addition, the Scoping report should contain sufficient information to allow the Environmental Assessment Practitioner (EAP) to compile the Plan of Study for Environmental Impact Assessment (EIA), including the Noise component.



In this regard the following will be included to assist the EAP in the compilation of the Plan of Study (PoS) for the EIA:

- The potential impact will be evaluated (where possible) in terms of the nature (description of what causes the effect, what/who might be affected and how it/they might be affected) as well as the extent of the impact. This will be done by means of a site visit, where appropriate background noise levels will be determined and the identification of potential sensitive areas.
- A statement regarding the potential significance of the identified issues based on the evaluation of the issues/impacts.
- The identification of issues to be investigated in more detail during the Environmental Impact Assessment phase,
- Details regarding the methodology followed to estimate and assess the potentially significant impacts during the EIA phase.

## **1.5 STUDY AREA**

The proposed WEF will be situated in an area with a rural character, but an industrial area is situated within 2 kilometres in a westerly direction. The topography is flat, ranging from more than 28 mamsl to less than 17 mamsl.

It should be noted that the R27 main road traverse the area to the east of the proposed WEF, as well as the R45 secondary road to the north. The industrial area to the west would consist mostly of refineries related to the mining industry.

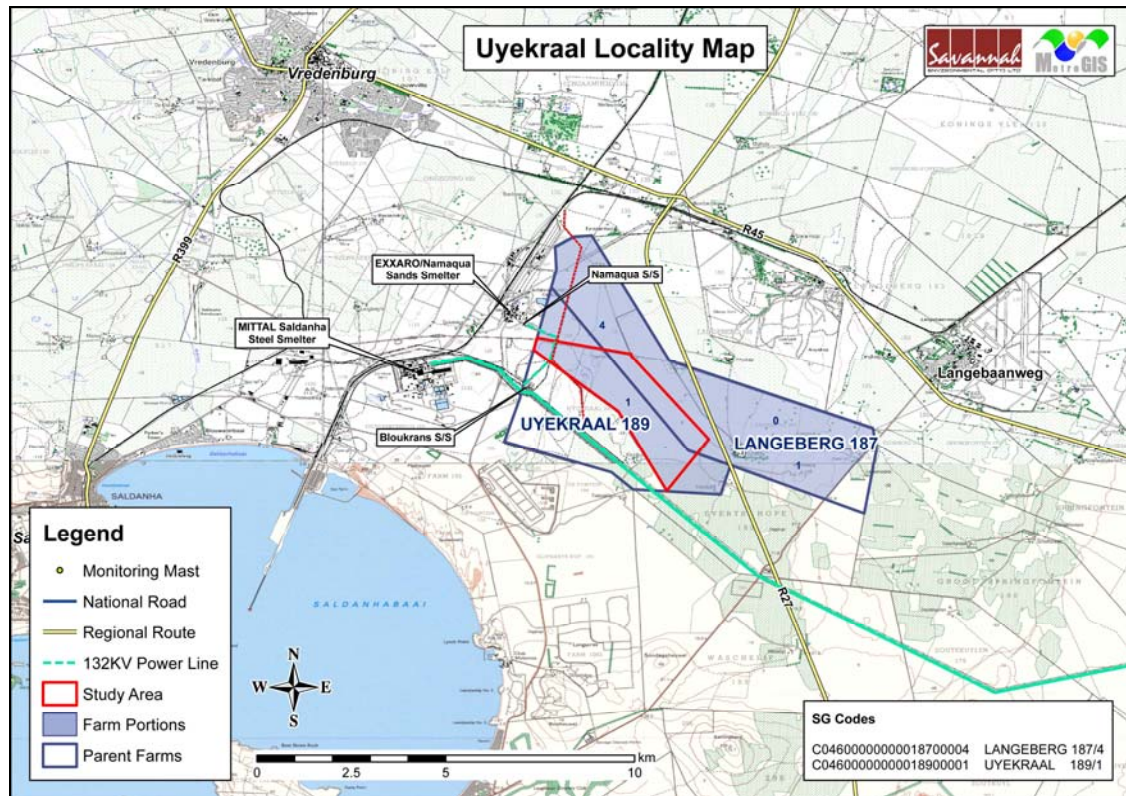
The vegetation in the area has been depleted due grazing activities from farming, and large trees and other flora identified in small areas around sensitive receptors, most notably to break the flat farming landscape at their properties. Typical small shrubs as found in the Western Cape can be found in areas not yet farmed or set out for industrial use.

Based by previous work done in the area by the author, the study area should have a rural character in terms of the background noise levels. Ambient Sound levels of between 30 and 35 dBA can be expected (areas away from any activity in windless conditions) during the day and night. Areas closer to the provincial roads and the industrial area would have higher ambient sound levels. A site locality map is presented in **Figure 1-1**.



## 1.6 AVAILABLE INFORMATION

Little information regarding the soundscape of the area is currently available.

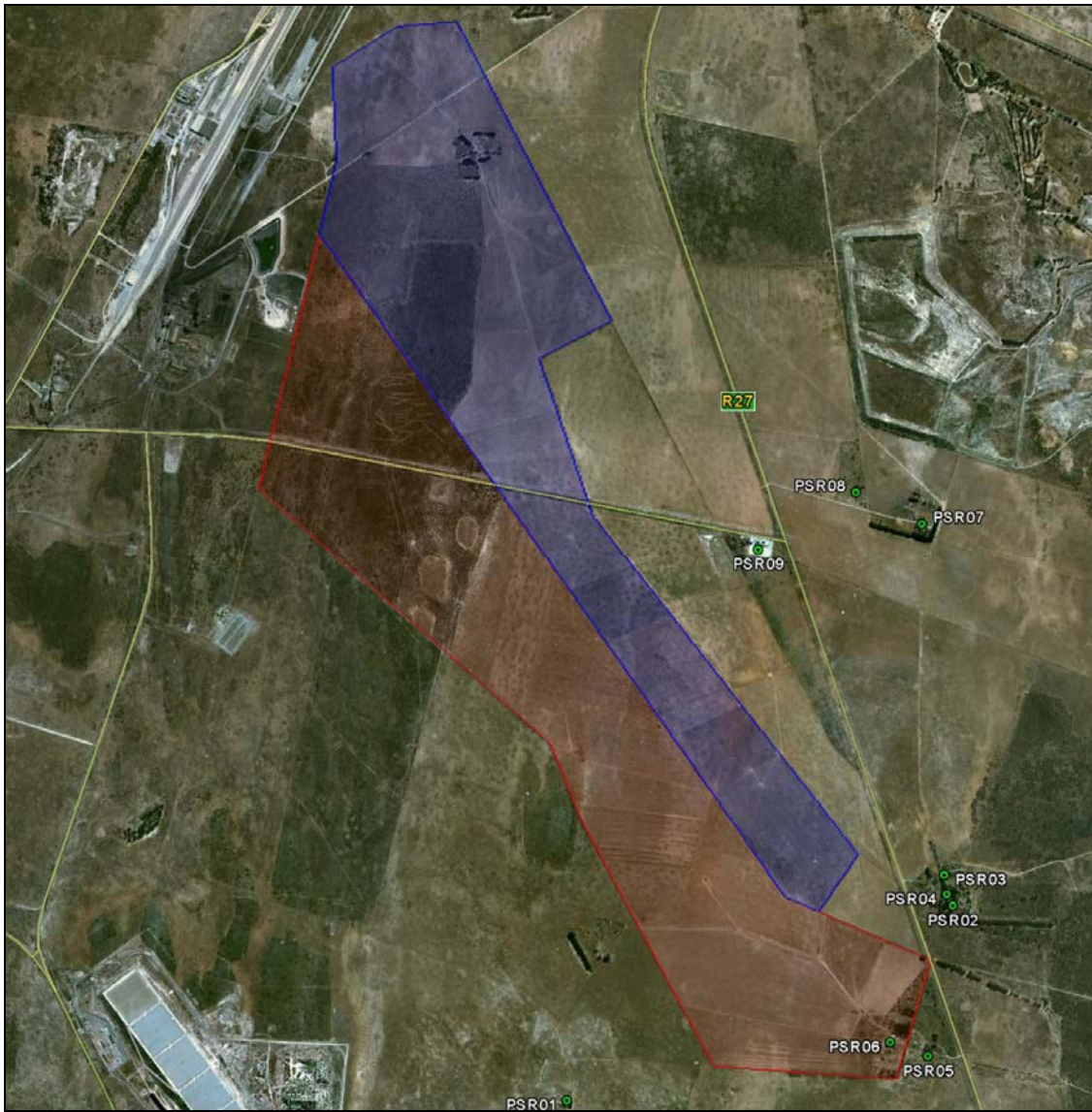


**Figure 1-1: Locality map indicating the various portions proposed for the Uyekraal Wind Energy Facility**

## 1.7 POTENTIAL SENSITIVE RECEPTORS

An assessment of the area was done using GoogleEarth® to investigate the presence of any potential sensitive receptors (PSR) that might be impacted by the proposed development. The assessment indicated there are a number of potentially sensitive receptors living in the area.

Receptors identified are highlighted in **Figure 1-2**. It is believed that available topographical maps, GoogleEarth® imagery and information that can be gained during a site visit should be sufficient to identify and confirm potential sensitive receptors.



**Figure 1-2: Aerial image indicating potentially sensitive receptors**



## **2 POLICIES AND THE LEGAL CONTEXT**

### **2.1 THE REPUBLIC OF SOUTH AFRICA CONSTITUTION ACT (“THE CONSTITUTION”)**

The environmental right contained in section 24 of the Constitution provides that everyone is entitled to an environment that is not harmful to his or her well-being. In the context of noise, this requires a determination of what level of noise is harmful to well-being. The general approach of the common law is to define an acceptable level of noise as that which the reasonable person can be expected to tolerate in the particular circumstances. The subjectivity of this approach can be problematic, however, which has led to the development of noise standards (see Section 2.7).

“Noise pollution” is specifically included in Part B of Schedule 5 of the Constitution, which means that noise pollution control is a local authority competence, provided that the local authority concerned has the capacity to carry out this function.

### **2.2 THE ENVIRONMENT CONSERVATION ACT**

The Environment Conservation Act (“ECA”) allows the Minister of Environmental Affairs and Tourism (“now the Minister of Water and Environmental Affairs”) to make regulations regarding noise, among other concerns. The Minister has made noise control regulations under the ECA, adopted in Provincial Notice 627 of 1998 by the Western Cape Provincial Authority.

### **2.3 THE NATIONAL ENVIRONMENTAL MANAGEMENT ACT**

The National Environmental Management Act (“NEMA”) defines “pollution” to include any change in the environment, including noise. A duty therefore arises under section 28 of NEMA to take reasonable measures while establishing and operating the WEF to prevent noise pollution occurring. NEMA sets out measures which may be regarded as reasonable. They include measures:

1. to investigate, assess and evaluate the impact on the environment;
2. to inform and educate employees about the environmental risks of their work and the manner in which their tasks must be performed in order to avoid causing significant pollution or degradation of the environment;



3. to cease, modify or control any act, activity or process causing the pollution or degradation;
4. to contain or prevent the movement of;
5. to eliminate any source of the pollution or degradation; or
6. to remedy the effects of the pollution or degradation.

#### **2.4 NATIONAL ENVIRONMENTAL MANAGEMENT: AIR QUALITY ACT ("AQA")**

Section 34 of the National Environmental Management: Air Quality Act (Act 39 of 2004) makes provision for:

- (1) the Minister to prescribe essential national noise standards -
  - (a) for the control of noise, either in general or by specified machinery or activities or in specified places or areas; or
  - (b) for determining -
    - (i) a definition of noise; and
    - (ii) the maximum levels of noise.
- (2) When controlling noise the provincial and local spheres of government are bound by any prescribed national standards.

This section of the Act is in force but no such standards have yet been promulgated.

An atmospheric emission licence issued in terms of section 22 may contain conditions in respect of noise. This however will not be relevant to the WEF.

#### **2.5 NOISE CONTROL REGULATIONS**

In terms of section 25 of the ECA, the national noise-control regulations (GN R154 in *Government Gazette* No. 13717 dated 10 January 1992) were promulgated. The NCRs were revised under Government Notice Number R. 55 of 14 January 1994 to make it obligatory for all authorities to apply the regulations.

Subsequently, in terms of Schedule 5 of the Constitution of South Africa of 1996 legislative responsibility for administering the NCR was devolved to provincial and local authorities. Provincial Noise Control Regulations exist in the Western Cape province (Provincial Notice 627 of 20 November 1998).



In terms of the National Noise Control Regulations, if the predicted level of noise emanating from a proposed activity is likely to cause the noise levels on surrounding land to exceed 65 dBA (61 dBA for an industrial noise), noise mitigation measures are required to be implemented to ensure that the noise levels on the affected land are reduced so as not to exceed 65 dBA.

In addition, increases above 7 dBA from the background ambient noise levels are considered a "Disturbing noise".

## **2.6 DRAFT MODEL AIR QUALITY MANAGEMENT BY-LAW FOR ADOPTION AND ADAPTATION BY MUNICIPALITIES**

Draft model air quality management by-laws for adoption and adaptation by municipalities was published by the Department of Environmental Affairs in the Government Gazette of 15 July 2009 as General Notice (for comments) 964 of 2009. Section 18 specifically focuses on Noise Pollution Management, with sub-section 1 stating:

*"No person shall make, produce or cause a disturbing noise, or allow it to be made, produced or caused by any person, animal, machine, device or apparatus or any combination thereof."*

The draft regulations differs from the current provincial Noise Control Regulations as it defines a disturbing noise as a noise that is measurable or calculable of which the rating level exceeds the equivalent continuous rating level as defined in SANS 10103.

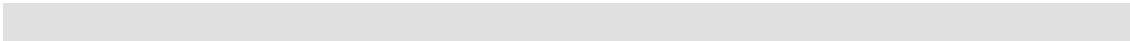
## **2.7 NOISE STANDARDS**

Four South African Bureau of Standards (SABS) scientific standards are considered relevant to noises from a Wind Energy Facility. They are:

- SANS 10103:2004. 'The measurement and rating of environmental noise with respect to annoyance and to speech communication'.
- SANS 10210:2004. 'Calculating and predicting road traffic noise'.
- SANS 10328:2003. 'Methods for environmental noise impact assessments'.
- SANS 10357:2004. 'The calculation of sound propagation by the Concave method'.



The relevant standards use the equivalent continuous rating level as a basis for determining what is acceptable. The levels may take single event noise into account but single event noise by itself does not determine whether noise levels are acceptable for land use purposes. The recommendations that the standards make are likely to inform decisions by authorities but non-compliance with the standards will not necessarily render an activity unlawful *per se*.





### **3 POTENTIAL NOISE SOURCES**

Increased noise levels are directly linked with the various activities associated with the construction of the WEF and related infrastructure, as well as the operational phase of the activity. The specific activities relating to construction of the WEF will only be known during the EIA phase of the project, and therefore will only be discussed in a generalised manner in the following sections.

However, commonly the most significant stage relating to noise is the operational phase, and not the construction phase. This is because the duration of activities during the construction phase are generally short.

In addition, the exact locations of the various Wind Turbine Generator (WTGs) will only be defined during the EIA phase, and only then their noise impact will be modeled in detail.

#### **3.1 POTENTIAL NOISE SOURCES: CONSTRUCTION PHASE**

##### **3.1.1 Construction equipment**

Construction activities include:

- construction of access roads,
- establishment of turbine tower foundations and electrical substation,
- the possible establishment, operation and removal of concrete batching plants,
- the construction of any buildings,
- digging of trenches to accommodate underground power cables; and
- the erection of turbine towers and assembly of WTGs.

The equipment likely to be required to complete the above tasks will typically include:

- excavator/grader, bulldozer, dump trucks, vibratory roller, bucket loader, rock breaker, (*potentially*) drill rig, excavator/grader, bulldozer, dump truck, flat bed trucks, concrete truck(s), cranes, fork lift and various 4WD and service vehicles.



### **3.1.2 Material supply: Concrete batching plants and use of Borrow Pits**

Instead of transporting the required material to the site using concrete trucks, portable concrete batching plants may be required to supply concrete onsite. Batching plant equipment may be relocated between the sites as the works progress to different areas of the site. The need for such batching plants, the number, and whether they will be moved is yet unknown.

It is not known whether the developer may make use of a borrow pit (for aggregate material) and a portable rock crusher plant and screen.

### **3.1.3 Blasting**

Blasting may also be required as part of the civil works to clear obstacles or to prepare foundations. Should a borrow pit be used to supply rocks for construction purposes, blasting could also be expected. However, no information regarding the use, or even the feasibility of such a borrow pit is known.

However, blasting will not be considered during the EIA phase for the following reasons:

- Blasting is highly regulated, and control of blasting to protect human health, equipment and infrastructure will ensure that any blasts will use minimum explosives and will occur in a controlled manner. With regards to blasting in borrow pits, explosives are used with a low detonation speed, reducing vibration, sound pressure levels and air blasts. The breaking of obstacles with explosives is also a specialized field, and when correct techniques are used, it causes less noise than using a rock-breaker.
- People are generally more concerned over ground vibration and air blast levels that might cause building damage than the impact of the noise from the blast.
- Blasts are an infrequent occurrence, with a loud but a relative instantaneous character. Potentially affected parties normally receive sufficient notice (siren), and the knowledge that the duration of the siren noise as well as the blast will be over relative fast, resulting in a higher acceptance of the noise.

### **3.1.4 Traffic**

The last significant source of noise during the construction phase is additional traffic to and from the site, as well as traffic on the site. The use of a borrow pit(s), onsite



crushing and screening and concrete batching plants will significantly reduce heavy vehicle movement to and from the site.

Construction traffic is expected to be generated throughout the entire construction period, however, the volume and type of traffic generated will be dependant upon the construction activities being conducted, which will vary during the construction period. Noise levels due to traffic will be estimated using the methodology stipulated in SANS 10210:2004 (Calculating and predicting road traffic noise).

### **3.2 POTENTIAL NOISE SOURCES: OPERATIONAL PHASE**

Noise emitted by wind turbines can be associated with two types of noise sources. These are aerodynamic sources due to the passage of air over the wind turbine blades and mechanical sources which are associated with components of the power train within the turbine, such as the gearbox and generator and control equipment for yaw, blade pitch, etc. These sources normally have different characteristics and can be considered separately. In addition there are other lesser noise sources, such as the sub-stations, traffic (maintenance) and transmission line noise.

#### **3.2.1 Wind Turbine Noise: Aerodynamic sources<sup>1</sup>**

Aerodynamic noise is emitted by a wind turbine blade through a number of sources such as:

1. Self noise due to the interaction of the turbulent boundary layer with the blade trailing edge.
2. Noise due to inflow turbulence (turbulence in the wind interacting with the blades).
3. Discrete frequency noise due to trailing edge thickness.
4. Discrete frequency noise due to laminar boundary layer instabilities (unstable flow close to the surface of the blade).
5. Noise generated by the rotor tips.

---

<sup>1</sup> [Reference source 6](#)



### 3.2.2 Wind Turbine: Mechanical sources<sup>2</sup>

Mechanical noise is normally perceived within the emitted noise from wind turbines as an audible tone(s) which is subjectively more intrusive than a broad band noise of the same sound pressure level. Sources for this noise are normally associated with:

- the gearbox and the tooth mesh frequencies of the step up stages;
- generator noise caused by coil flexure of the generator windings which is associated with power regulation and control;
- generator noise caused by cooling fans; and
- control equipment noise caused by hydraulic compressors for pitch regulation and yaw control.

Tones are noises with a narrow sound frequency composition (e.g., the whine of an electrical motor). Annoying tones can be created in numerous ways: machinery with rotating parts such as motors, gearboxes, fans and pumps often create tones. An imbalance or repeated impacts may cause vibration that, when transmitted through surfaces into the air, can be heard as tones. Pulsating flows of liquids or gases can also create tones, which may be caused by combustion processes or flow restrictions. The best and most well known example of a tonal noise is the buzz created by a flying mosquito.

Where complaints have been received due to the operation of wind farms, tonal noise from the installed wind turbines appears to have increased the annoyance perceived by the complainants and indeed has been the primary cause for complaint.

However, tones were normally associated with the older models of turbines. All turbine manufacturers have started to ensure that sufficient forethought is given to the design of quieter gearboxes and the means by which these vibration transmission paths may be broken. Through the use of careful gearbox design and/or the use of anti-vibration techniques, it is possible to minimise the transmission of vibration energy into the turbine supporting structure. The benefits of these design improvements have started to filter through into wind farm developments which are using these modified wind turbines. ***New generation wind turbine generators do not emit any clearly distinguishable tones.***

---

<sup>2</sup> [Reference source 6](#)



### 3.2.3 Transformer noises (Sub-stations)

Also known as magnetostriction, this is when the sheet steel used in the core of the transformer tries to change shape when being magnetized. When the magnetism is taken away, the shape returns, only to try and deform in a different manner when the polarity is changed.

This deformation is not uniform; consequently it varies all over a sheet. With a transformer core being composed of many sheets of steel, these deformations are taking place erratically all over each sheet, and each sheet is behaving erratically with respect to its neighbour. The resultant is the "hum" frequently associated with transformers. While this may be a soothing sound in small home appliances, various complaints are logged in areas where people stay close to these transformers. At a voltage frequency of 50 Hz, these "vibrations" take place 100 times a second, resulting in a tonal noise at 100Hz. ***However, this is a relative easy noise to mitigate with the use of acoustic shielding and/or placement of the transformer.***

### 3.2.4 Transmission Line Noise (Corona noise)

Corona noise is caused by the partial breakdown of the insulation properties of air surrounding the conducting wires. It can generate an audible and radio-frequency noise, but generally only occurs in humid conditions, as provided by fog or rain. A minimum line potential of 70 kV or higher is generally required to generate corona noise depending on the electrical design. Corona noise does not occur on domestic distribution lines.

Corona noise has two major components: a low frequency tone associated with the frequency of the AC supply (100 Hz for 50 Hz source) and broadband noise. The tonal component of the noise is related to the point along the electric waveform at which the air begins to conduct. This varies with each cycle and consequently the frequency of the emitted tone is subject to great fluctuations. Corona noise can be characterised as broadband 'crackling' or 'buzzing', but ***fortunately it is generally only a feature during fog or rain.***

It will not be further investigated, as corona discharges results in:

- Power losses,
- Audible noises,



- Electromagnetic interference,
- A purple glow,
- Ozone production; and
- Insulation damage.

***As such Electrical Service Providers such as ESKOM go to great lengths to design power transmission equipment to minimise the formation of corona discharges. In addition, it is an infrequent occurrence with a relatively short duration compared to other operational noises.***

### **3.2.5 Low Frequency Noise**

#### *3.2.5.1 Background and Information*

Low frequency sound is the term used to describe sound energy in the region below ~200Hz. The rumble of thunder and the throb of a diesel engine are both examples of sounds with most of their energy in this low frequency range. Infrasound is often used to describe sound energy in the region below 20Hz. Almost all noise in the environment has components in this region although they are of such a low level that they are not significant (wind, ocean, thunder).

While significant work has been done on this field, there exist uncertainties around Infrasound and Low Frequency Noise.

#### *3.2.5.2 The generation of Low Frequency Sounds*

Because of the low rotational rates of the blades of a WTG, the peak acoustic energy radiated by large wind turbines is in the infrasonic range with a peak in the 8-12 Hz range. For smaller machines, this peak can extend into the low-frequency "audible" (20-20KHz) range because of higher rotational speeds and multiple blades.

#### *3.2.5.3 Detection of Low Frequency Sounds*

Investigations have shown that the perception and the effects of sounds differ considerably at low frequencies as compared to mid- and high frequencies. The main aspects to these differences are:

- a weakening of pitch sensation as the frequency of the sound decreases below 60 Hz;
- perception of sounds as pulsations and fluctuations;



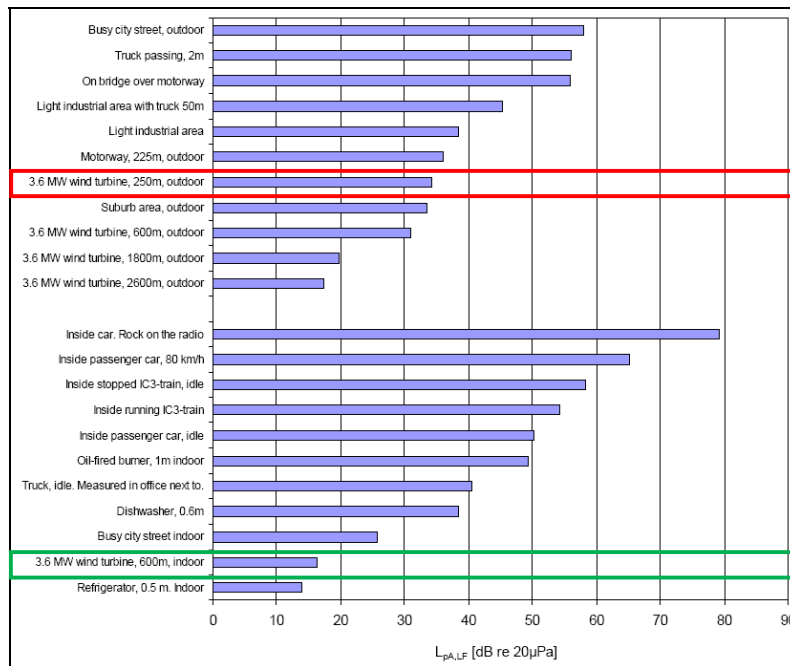
- a much more rapid increase of loudness and annoyance with increasing sound level at low frequencies than at mid- or high frequencies;
- complaints about the feeling of ear pressure;
- annoyance caused by secondary effects like rattling of building elements, e.g. windows and doors or the tinkling of bric-a-brac;
- other psycho acoustic effects, e.g. sleep deprivation, a feeling of uneasiness; and
- reduction in building sound transmission loss at low frequencies compared to mid- or high frequencies.

#### *3.2.5.4 Measurement, Isolation and Assessment of Low Frequency Sounds*

There remain significant debate regarding the noise from WTG's, public response to that noise, as well as the presence or not of low frequency sound and how it affects people. While low frequency sounds can be measured, it is far more difficult to isolate low frequency sounds due to the numerous sources generating these sounds.

From sound power level emission tables (for Wind Turbines) it can be seen that a wind turbine has potential to generate low frequency sounds with sufficient energy to warrant the need to investigate WTG as a source of low frequency sounds. The reader is referred to **Figure 3-1** for examples of various sources and associated levels of low frequency sounds. Of particular note in this regard is the low frequency sounds associated with a 3.6 MW wind turbine at 250 m outdoors (red) and the same turbine at 600 m indoors (green). Note that this should not be seen as a rule for all turbines, as each turbine make, model and size have a specific noise emission characteristic. The larger a wind turbine (especially the blades), the higher the acoustical energy in the lower frequencies and the potential for low frequency sounds should be evaluated for each project and turbine proposed.

SANS 10103:2004 proposes a method to identify whether low frequency noise could be an issue. It proposes that if the difference between the A-frequency weighted and the C-frequency weighted equivalent continuous ( $L_{Aeq} \gg L_{Ceq}$ ) sound pressure levels is greater than 10 dB, a predominant low frequency component **may** be present.



**Figure 3-1: Examples on A-weighted low frequency levels  $L_{pA,LF}$  from a number of indoor and outdoor sources.**

### 3.2.6 Amplitude modulation

There is one other characteristic of wind turbine sound that could increase the sleep disturbance potential above that of other long-term noise sources. The amplitude modulation of the sound emissions from the wind turbines create a repetitive rise and fall in sound levels synchronized to the blade rotation speed, sometimes referred to as a “swish” or “thump”. Many common weather conditions increase the magnitude of amplitude modulation. Unfortunately most of these occur at night. It is also reported that for many people, especially seniors, children and those with pre-existing medical conditions, this represents a major challenge to restful sleep.

Regrettably the mechanism of this noise is not known though various possible reasons have been put forward. Although the prevalence of complaints about amplitude modulation is relatively small, it is not clear whether this is because it does not occur often enough or whether it is because housing is not in the right place to observe it. Furthermore the fact that the mechanism is unknown means that it is not possible to predict when or whether it will occur.



Even though there are thousands of wind turbine generators in the world, amplitude modulation is one subject receiving the least complaints and due to this very few complaints, little research has gone into this subject. ***It is included in this report to highlight all potential risks, albeit extremely low risks such as this (low significance due to very low probability).***

---



## **4 METHODOLOGY: CALCULATION OF FUTURE NOISE EMISSIONS DUE TO PROPOSED PROJECT**

### **4.1 MEASUREMENT PROCEDURE**

The measurements will be carried out in accordance with the procedures specified in SANS 10103<sup>3</sup> using the noise parameter A-weighted equivalent sound pressure level,  $L_{Aeq,T}$ . The work will be done using a Rion NL-32 SLM as well as a Rion NC-74 calibrator.

At each selected measurement point the ambient noise level will be sampled for a minimum duration of 10 minutes each. Subjective observations of the sound climate at the measurement point will at the same time be noted. Sampling will be conducted in a manner to allow future repeatability.

### **4.2 NOISE EMISSIONS INTO THE SURROUNDING ENVIRONMENT**

The noise emissions into the environment from the various sources as defined by the project developer will be calculated during the EIA phase using the sound propagation model described in SANS 10357<sup>4</sup>. The following will be taken into account:

- The octave band sound pressure emission levels of processes and equipment;
- The distance of the receiver from the noise sources;
- The impact of atmospheric absorption;
- The meteorological conditions in terms Pasquill stability;
- The preliminary layout details of the proposed project;
- Topographical layout (-3 dB penalty will be imposed);
- Acoustical characteristics of the ground;
- Low-frequency noise impacts.

The potential impact from traffic will not be considered during the Scoping phase, but only in the EIA phase. During the EIA phase the noise emission into the environment from the various traffic options will be calculated using the sound propagation model described in SANS 10210<sup>5</sup>. Corrections such as the following will be considered:

- Distance of receptor from roads;

---

<sup>3</sup> [SANS 10103:2004. 'The measurement and rating of environmental noise with respect to annoyance and to speech communication'](#)

<sup>4</sup> [SANS 10357:2004 The calculation of sound propagation by the Concave method'](#)

<sup>5</sup> [SANS 10210:2004. 'Calculating and predicting road traffic noise'](#)



- Road construction material;
- Average speeds of travel;
- Types of vehicles used;
- Ground acoustical conditions.

In general a topographical penalty of -3 dB will be applied. The previous two conditions therefore could result in an overestimation (worst-case scenario) than the potential real situation.





## **5 METHODOLOGY: NOISE IMPACT ASSESSMENT AND SIGNIFICANCE**

### **5.1 DIFFERENCE BETWEEN SOUND AND NOISE**

Noise can be defined as "unwanted sound", and an audible acoustic energy that adversely affects the physiological and/or psychological well-being of people, or which disturbs or impairs the convenience or peace of any person. One can generalize by saying that sound becomes unwanted when it:

- Hinders speech communication,
- Impedes the thinking process,
- Interferes with concentration,
- Obstructs activities (work, leisure and sleeping),
- Presents a health risk due to hearing damage.

However, it is important to remember that whether a given sound is "noise" depends on the listener or hearer. The driver playing loud rock music on their car radio hears no noise, but the person in the traffic behind them hears nothing but noise.

Response to noise is unfortunately not an empirical absolute, as it is seen as a multi-faceted psychological concept, including behavioral and evaluative aspects. For instance, in some cases annoyance is seen as an outcome of disturbances, in other cases it is seen as an indication of the degree of helplessness with respect to the noise source.

Noise does not need to be loud to be considered "disturbing". One can refer to a dripping tap in the quiet of the night, or the irritating "thump-thump" of the music from a neighboring house at night when one would like to sleep. Severity of the annoyance depends on factors such as:

- The manner in which the receptor can control the noise (helplessness),
- The time, unpredictability, duration, and intensity of the noise,
- The physiological state of the receptor.



## 5.2 IMPACT ASSESSMENT CRITERIA

### 5.2.1 Overview: The common characteristics

The word "noise" is generally used to convey a negative response or attitude to the sound received by a listener. There are four common characteristics of sound, any or all of which determine listener response and the subsequent definition of the sound as "noise". These characteristics are:

- Intensity
- Loudness
- Annoyance
- Offensiveness

Of the four common characteristics of sound, intensity is the only one which is not subjective and can be quantified. Loudness is a subjective measure of the effect sound has on the human ear. As a quantity it is therefore complicated but has been defined by experimentation on subjects known to have normal hearing.

The annoyance and offensive characteristics of noise are also subjective. Whether or not a noise causes annoyance mostly depends upon its reception by an individual, the environment in which it is heard, the type of activity and mood of the person and how acclimatised or familiar that person is to the sound.

### 5.2.2 Noise criteria of concern

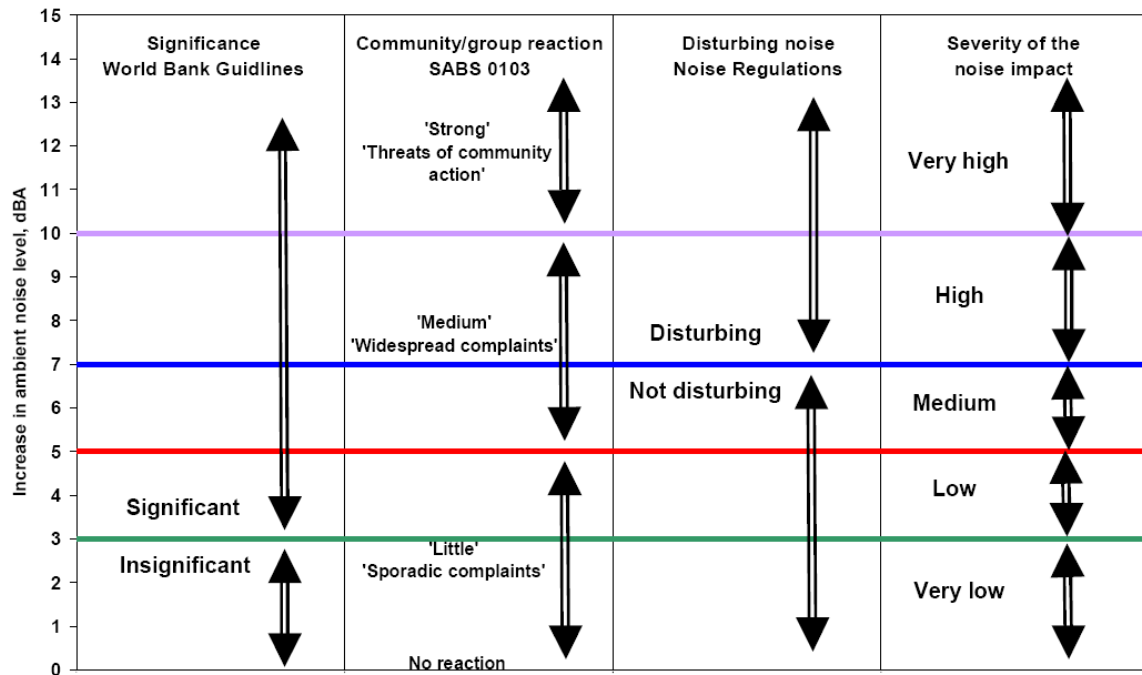
The criteria used in this report were drawn from the criteria for the description and assessment of environmental impacts from the EIA Regulations, published by the Department of Environmental Affairs and Tourism (April 1998) in terms of the NEMA, SANS 10103 as well as guidelines from the World Health Organisation (WHO).

There are a number of criteria that are of concern for the assessment of noise impacts. These can be summarised in the following manner:

- *Increase in noise levels:* People or communities often react to an increase in the ambient noise level they are used to, which is caused by a new source of noise. With regards to the Noise Control Regulations, an increase of more than 7 dBA is considered a disturbing noise. See also **Figure 5-1**.
- *Zone Sound Levels:* Previously referred as the acceptable rating levels, it sets acceptable noise levels for various areas. See also **Table 5.1**.



- *Absolute or total noise levels:* Depending on their activities, people generally are tolerant to noise up to a certain absolute level, e.g. 65 dBA. However, anything above this level is considered unacceptable.



**Figure 5-1: Criteria to assess the significance of impacts stemming from noise**

In South Africa the document that addresses the issues concerning environmental noise is SANS 10103. See also **Table 5.1**. It provides the maximum average ambient noise levels,  $L_{Req,d}$  and  $L_{Req,nr}$  during the day and night respectively to which different types of developments may be exposed. For rural areas the Zone Sound Levels are:

- Day (06:00 to 22:00) -  $L_{Req,d} = 45$  dBA, and
- Night (22:00 to 06:00) -  $L_{Req,n} = 35$  dBA.

SANS 10103 also provides a guideline for estimating community response to an increase in the general ambient noise level caused by an intruding noise. If  $\Delta$  is the increase in noise level, the following criteria are of relevance:

- **$\Delta \leq 3$  dBA:** An increase of 3 dBA or less will not cause any response from a community. It should be noted that for a person with average hearing acuity



- an increase of less than 3 dBA in the general ambient noise level would not be noticeable.
- **3 < Δ ≤ 5 dBA:** An increase of between 3 dBA and 5 dBA will elicit 'little' community response with 'sporadic complaints'. People will just be able to notice a change in the sound character in the area.
  - **5 < Δ ≤ 15 dBA:** An increase of between 5 dBA and 15 dBA will elicit a 'medium' community response with 'widespread complaints'. In addition, an increase of 10 dBA is subjectively perceived as a doubling in the loudness of a noise. For an increase of more than 15 dBA the community reaction will be 'strong' with 'threats of community action'.

In addition, it should be noted that the Noise Control Regulations defines disturbing noise to be any change in the ambient noise levels higher than 7 dBA than the background.

**Table 5.1: Acceptable Zone Sound Levels for noise in districts (SANS 10103)**

1	2	3	4	5	6	7
Type of district	Equivalent continuous rating level ( $L_{Req,T}$ ) for noise, dBA					
	Outdoors			Indoors, with open windows		
	Day-night $L_{R,dn}^a$	Day-time $L_{Req,d}^b$	Night-time $L_{Req,n}^b$	Day-night $L_{R,dn}^a$	Day-time $L_{Req,d}^b$	Night-time $L_{Req,n}^b$
<b>RESIDENTIAL DISTRICTS</b>						
a) Rural districts	45	45	35	35	35	25
b) Suburban districts with little road traffic	50	50	40	40	40	30
c) Urban districts	55	55	45	45	45	35
<b>NON RESIDENTIAL DISTRICTS</b>						
d) Urban districts with some workshops, with business premises, and with main roads	60	60	50	50	50	40
e) Central business districts	65	65	55	55	55	45
f) Industrial districts	70	70	60	60	60	50

### 5.2.3 Determining appropriate Zone Sound Levels

SANS 10103 unfortunately does not cater for instances when background noise levels change due to the impact of external forces. Locations close to the sea for instance always have a background noise level exceeding 35 dBA, and, in cases



where the sea is rather turbulent, it can easily exceed 45 dBA. Similarly, noise induced by high winds again is not included.

Setting noise limits relative to the background noise level is relatively straightforward when the prevailing background noise level and source level are constant. However, wind turbines emit noise that is related to wind speed, and the environment within which they are heard will probably also be dependent upon the strength of the wind and the noise associated with its effects. It is therefore necessary to derive a background noise level that is indicative of the noise environment at the receiving property for different wind speeds so that the turbine noise level at any particular wind speed can be compared with the background noise level in the same wind conditions.

Therefore, when assessing the overall noise levels emitted by a wind farm it is necessary to consider the full range of operating wind speeds of the wind turbines. This covers the wind speed range from around 3-5m/s (the turbine cut-in wind speed) up to a wind speed range of 25-35m/s measured at the hub height of a wind turbine. However, the Noise Working Group proposes that noise limits only be placed up to a wind speed of 12 m/s for the following reasons:

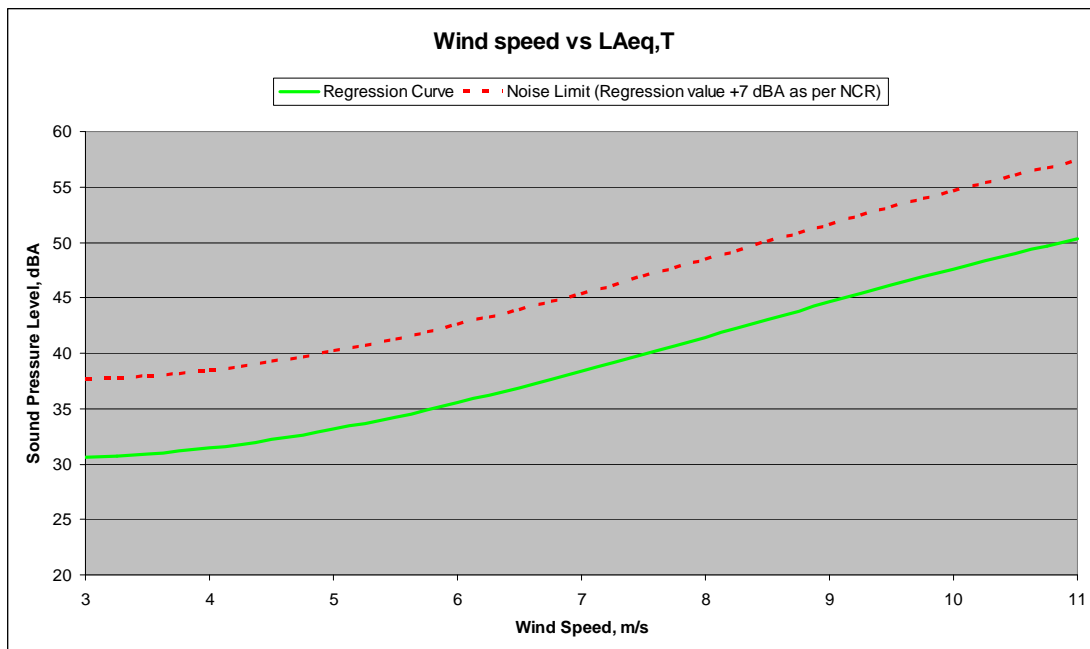
1. Wind speeds are not often measured at wind speeds greater than 12m/s at 10m height.
2. Reliable measurements of background noise levels and turbine noise will be difficult to make in high winds due to the effects of wind noise on the microphone and the fact that one could have to wait several months before such winds were experienced.
3. Turbine manufacturers are unlikely to be able to provide information on sound power levels at such high wind speeds for similar reasons.
4. If a wind farm meets noise limits at wind speeds lower than 12m/s it is most unlikely to cause any greater loss of amenity at higher wind speeds. Whilst turbine noise levels will still be reasonably constant, even in sheltered areas the background is likely to contain much banging and rattling due to the force of the wind.



Available data indicates that noises from a Wind Turbine is drowned by other noises (wind howling around building, rustling of leaves in trees, rattling noises, etc) above a wind speed of 10 m/s, even if the wind blows in the direction of the receiver.

A typical background noise vs. wind speed regression curve<sup>6</sup> is illustrated in **Figure 5-2**. It should be noted that curves for daytime (6:00 – 22:00) and night time (22:00 – 6:00) would be different, but as wind speeds increase, the wind induced noise levels approach each other (wind speeds exceeding 15 m/s).

For the purpose of the EIA, **Figure 5-2** will be considered, together with the zone sound levels as stipulated in SANS 10103.



**Figure 5-2: Background noise measurements and noise criteria curve considering wind speeds**

#### 5.2.4 Determining the Significance of the Noise Impact

The level of detail as depicted in the EIA regulations was fine tuned by assigning specific values to each impact. In order to establish a coherent framework within which all impacts could be objectively assessed, it was necessary to establish a

<sup>6</sup> Data from Silverton Wind Energy Facility in Australia. The dwelling is surrounded by a garden (with trees) and sheds, with a flat arid plain between the dwelling and the WEF.



rating system, which was applied consistently to all the criteria. For such purposes each aspect was assigned a value, ranging from one (1) to five (5), depending on its definition. This assessment is a relative evaluation within the context of all the activities and the other impacts within the framework of the project. An explanation of the impact assessment criteria is defined in **Table 5.2**.

**Table 5.2: Impact Assessment Criteria**

<b>Duration</b>	
<b>The lifetime of the impact that is measured in relation to the lifetime of the proposed development (construction, operational and closure phases). Will the receptors be subjected to increased noise levels for the lifetime duration of the project, or only infrequently.</b>	
<i>Temporary</i>	The impact will either disappear with mitigation, will be mitigated through a natural process, or will last less than an hour.
<i>Short term</i>	The impact will be applicable less than 24 hours.
<i>Medium term</i>	The impact will last up to a week.
<i>Long term</i>	The impact will last up to a month.
<i>Permanent</i>	Any impacts lasting more than a month. It is considered non-transitory. Mitigation either by man or natural process will not occur in such a way or in such a time span that the impact is transient.
<b>Spatial scale</b>	
<b>Classification of the physical and spatial scale of the impact</b>	
<i>Site</i>	The impacted area extends only as far as the activity, such as footprint occurring within the total site area.
<i>Local</i>	The impact could affect the local area (within 1.0 km from footprint of activity).
<i>Regional</i>	The impact could affect the area including the neighbouring farms, the transport routes and the adjoining towns.
<i>National</i>	The impact could have an effect that expands throughout the country (South Africa).
<i>International</i>	Where the impact has international ramifications that extend beyond the boundaries of South Africa.
<b>Probability</b>	
<b>This describes the likelihood of the impacts actually occurring, and whether it will impact on an identified receptor. The impact may occur for any length of time during the life cycle of the activity, and not at any given time. The classes are rated as follows:</b>	
<i>Improbable</i>	The possibility of the impact occurring is none, due either to the circumstances, design or experience. The chance of this impact occurring is zero (0 %).
<i>Possible</i>	The possibility of the impact occurring is very low, due either to the circumstances, design or experience. The chances of this impact occurring is defined as 25 %.
<i>Likely</i>	There is a possibility that the impact will occur to the extent that provisions must therefore be made. The chances of this impact occurring is defined as 50 %.
<i>Highly Likely</i>	It is most likely that the impacts will occur at some stage of the development. Plans must be drawn up before carrying out the activity. The chances of this impact occurring is defined as 75 %.
<i>Definite</i>	The impact will take place regardless of any prevention plans, and only mitigation actions or contingency plans to contain the effect can be relied on. The chance of this impact occurring is defined as 100 %.



<b>Magnitude</b>	
<b>This defines the impact as experienced by any receptor. In this report the receptor is defined as any resident in the area, but excludes faunal species.</b>	
<i>Low</i>	Increase in sound pressure levels between 0 and 3. The change is just discernable.
<i>Low Medium</i>	Increase in sound pressure levels between 4 and 6. The change is easily discernable.
<i>Medium</i>	Increase in sound pressure levels between 7 and 9. Sporadic complaints. Defined by the National Noise Regulations as being legally 'disturbing'. Any point where the zone sound levels.
<i>High</i>	Increase in sound pressure levels between 10 and 15. Change of 10 dBA is perceived as 'twice as loud', leading to widespread complaints. Any point where noise levels exceed zone sound criteria as per <b>Figure 5-2</b> .
<i>Very High</i>	Increase in sound pressure levels higher than 15. Threats of community or group action. Any point where noise levels exceed 65 dBA at any receptor.

In order to assess each of these factors for each impact, the following ranking scales as contained in **Table 5.3** will be used.

**Table 5.3: Assessment Criteria: Ranking Scales**

<b>PROBABILITY</b>		<b>MAGNITUDE</b>	
Description / Meaning	Score	Description / Meaning	Score
Definite/don't know	5	Very high/don't know	10
Highly likely	4	High	8
Likely	3	Medium	6
Possible	2	Low Medium	4
Improbable	1	Low	2
<b>DURATION</b>		<b>SPATIAL SCALE</b>	
Description / Meaning	Score	Description / Meaning	Score
Permanent	5	International	5
Long Term	4	National	4
Medium Term	3	Regional	3
Short term	2	Local	2
Temporary	1	Footprint	1

### **5.2.5 Identifying the Potential Impacts without Mitigation Measures (WOM)**

Following the assignment of the necessary weights to the respective aspects, criteria are summed and multiplied by their assigned probabilities, resulting in a value for each impact (prior to the implementation of mitigation measures). Significance without mitigation is rated on the following scale:



<b>SR &lt; 30</b>	Low (L)	Impacts with little real effect and which should not have an influence on or require modification of the project design or alternative mitigation. No mitigation is required.
30 < <b>SR</b> < 60	Medium (M)	Where it could have an influence on the decision unless it is mitigated. An impact or benefit which is sufficiently important to require management. Of moderate significance - could influence the decisions about the project if left unmanaged.
<b>SR &gt; 60</b>	High (H)	Impact is significant, mitigation is critical to reduce impact or risk. Resulting impact could influence the decision depending on the possible mitigation. An impact which could influence the decision about whether or not to proceed with the project.

### 5.2.6 Identifying the Potential Impacts with Mitigation Measures (WM)

In order to gain a comprehensive understanding of the overall significance of the impact, after implementation of the mitigation measures, it will be necessary to re-evaluate the impact. Significance with mitigation is rated on the following scale:

<b>SR &lt; 30</b>	Low (L)	The impact is mitigated to the point where it is of limited importance.
30 < <b>SR</b> < 60	Medium (M)	Notwithstanding the successful implementation of the mitigation measures, to reduce the negative impacts to acceptable levels, the negative impact will remain of significance. However, taken within the overall context of the project, the persistent impact does not constitute a fatal flaw.
<b>SR &gt; 60</b>	High (H)	The impact is of major importance. Mitigation of the impact is not possible on a cost-effective basis. The impact is regarded as high importance and taken within the overall context of the project, is regarded as a fatal flaw. An impact regarded as high significance, after mitigation could render the entire development option or entire project proposal unacceptable.

### 5.3 EXPRESSION OF THE NOISE IMPACTS

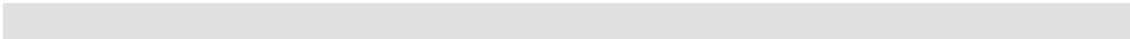
The noise impacts can be expressed in terms of the increase in present ambient noise levels caused by noise emissions from the proposed project. The background ambient noise level used will be 28 dBA for the purpose of the Scoping report. In this report, as well as the EIA report will contours of equal increases in ambient noise levels be used:



- 0 – 3 dBA,
- 4 – 6 dBA,
- 7 – 9 dBA,
- 10 – 15 dBA,
- Higher than 15 dBA.

In addition predicted ambient sound levels will be presented in an appropriate scale using contours of constant sound pressure levels to illustrate the projected noise levels in the area.

For the purpose of this Scoping document, predicted sound levels have only been included for illustrative purposes, as well as to indicate the potential overall spatial extent of noise impacts that wind turbines may have. The purpose is to identify areas of possible concern for both the developer as well as stakeholders, highlighting important criteria for the EIA phase.





## **6 RESULTS AND PRELIMINARY IMPACT ASSESSMENT**

### **6.1 CONSTRUCTION PHASE**

Projected impacts from the construction phase can only be modelled once more information regarding the duration of construction and equipment used are known. Therefore the construction phase will only be dealt with in detail during the Environmental Impact Assessment phase.

During the EIA phase construction activities such as the (potential) borrow pit, concrete batching/delivery, foundation preparation, the digging of trenches and increased traffic (deliveries and movement onsite) will be considered, taking cognisance of the worst-case scenario (close to a potential sensitive receptor).

### **6.2 OPERATIONAL PHASE: ESTIMATED IMPACT AND IMPORTANT CONCEPTS**

For the purpose of the Scoping phase the impact that traffic may have on the surrounding noise environment are excluded, only to be considered during the EIA phase.

Conceptual scenarios were therefore modelled to illustrate the potential spatial extent of noise impacts that wind turbines may have on a potential receptor.

Three different scenarios were investigated, and the model ran for the worst case scenario as well as a more realistic scenario.

In all cases other variables were the same, being:

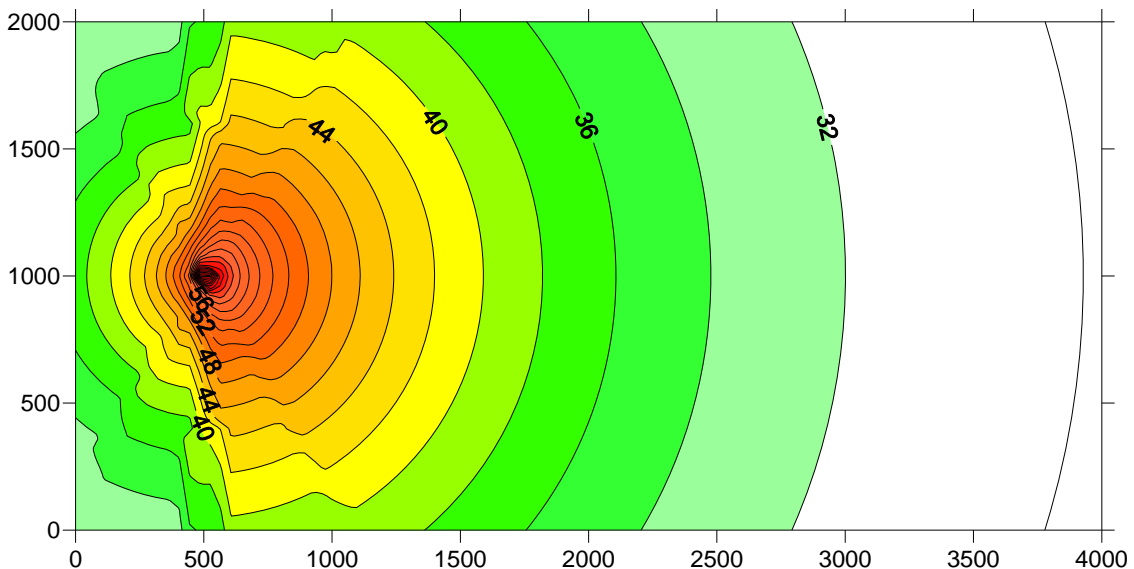
- Height penalty of -3 dBA,
- Atmospheric pressure of 85 kPa,
- Air temperature of 20 °C,
- Relative humidity of 80%,
- Westerly wind (selected to illustrate the issues),
- Pasquill stability category D (Night/early evening, fast winds, little cloud cover);
- Background noise levels at 28 dBA;
- Wind speed 6 m/s (noise from wind turbines dominating sound character)



In addition each scenario was run with hard ground conditions (-3 dBA penalty) as well as soft ground conditions (potential impact that ground conditions such as vegetation could have). The first scenario illustrates the worst case scenario (the **A**-case) where sound propagates undisturbed, with the second illustration per scenario (the **B**-case) being a more realistic situation where vegetation and/or surface conditions assist in the attenuation of noise.

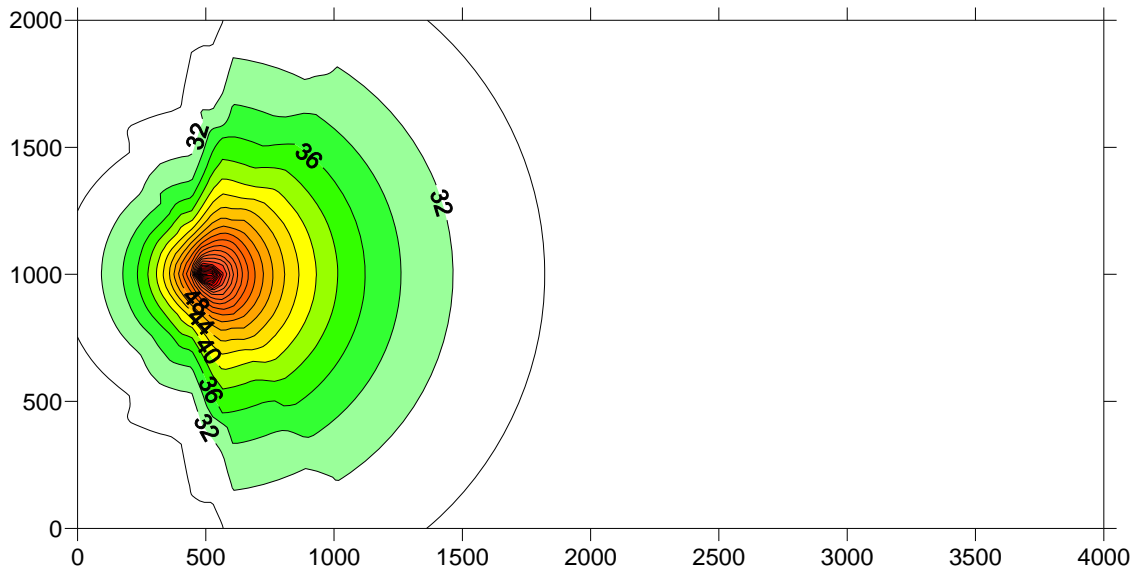
### 6.2.1 One Wind Turbine operating

In this scenario there is one wind turbine operating at point 500, 1000 (x, y) with a potential receptor at point 2000, 1500. Unit of measure is meters. The potential receptor is therefore 1500 meters from this conceptual wind turbine.



**Figure 6-1: One WTG operating, worst case scenario**

In this scenario (**Figure 6-1**) the potential receptor would be subject to noise in the order **36.7** dBA, and if one accept a background ambient noise level of **28** dBA, it represents a change of **8.7** dBA.



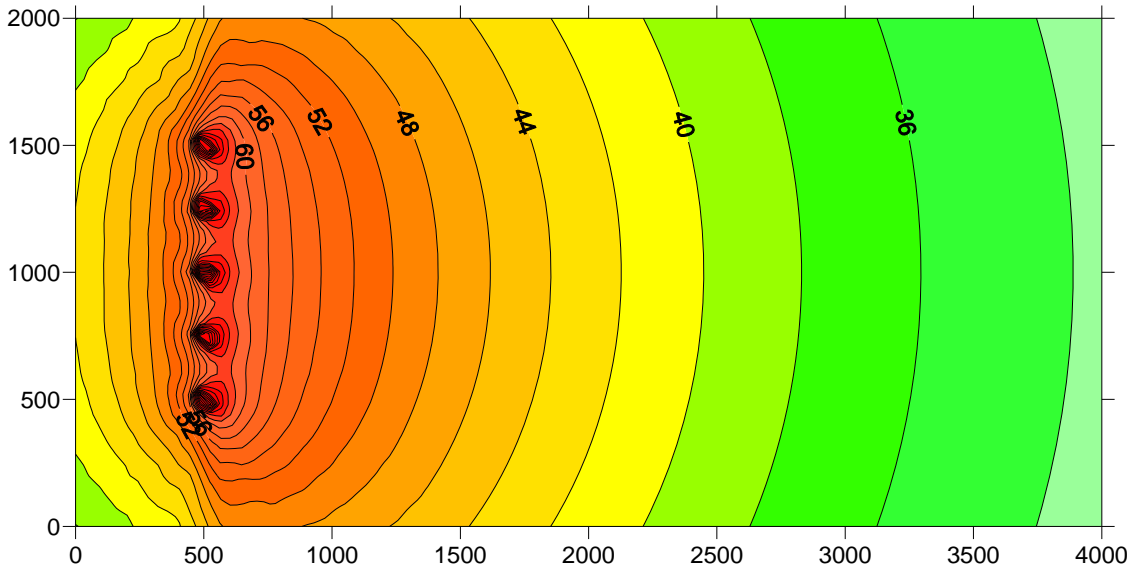
**Figure 6-2: One WTG operating, more realistic scenario**

**Figure 6-2** illustrates the situation where ground surface assist in the attenuation of the noise. This would be factors such as vegetation, ploughed fields or even a very uneven ground surface. In this scenario it would be difficult for the potential receptor to “hear” the sounds from the wind turbine as it would be part of the background ambient noise levels.

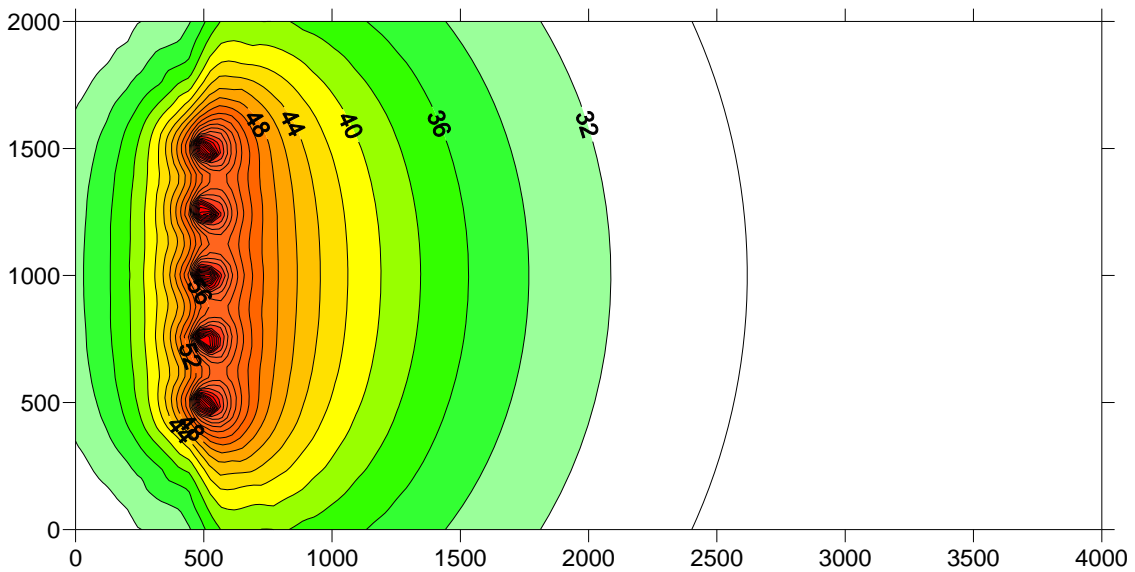
### 6.2.2 Five (5) Wind Turbines

However, when adding 4 more wind turbines (2 north, 2 south of the existing conceptual wind turbine of **Figure 6-1**), all on the 500 meter X-axis, the impact on the potential receptor (still at 2000, 1000) changes significantly (**Figure 6-3**). At **42.9** dBA, the *cumulative effect* from the 4 additional WTGs is approximately **5.4** dBA.

The more realistic scenario is illustrated in **Figure 6-4**, again indicating that soft ground conditions can significantly reduce the propagation of sound.



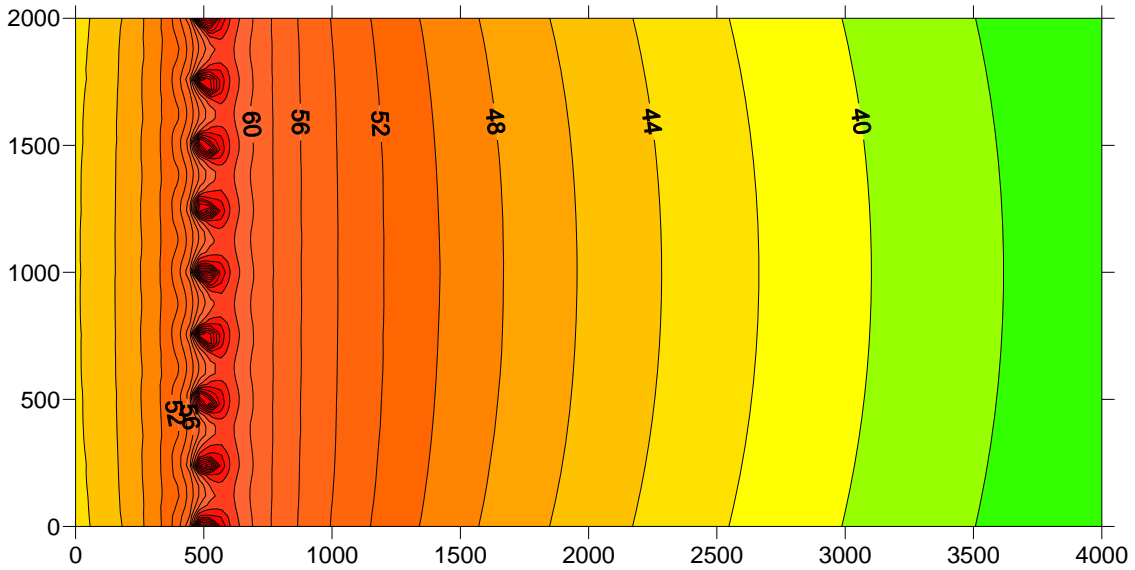
**Figure 6-3: 5 WTGs operating, worst case scenario**



**Figure 6-4: 5 WTGs operating, more realistic case scenario**

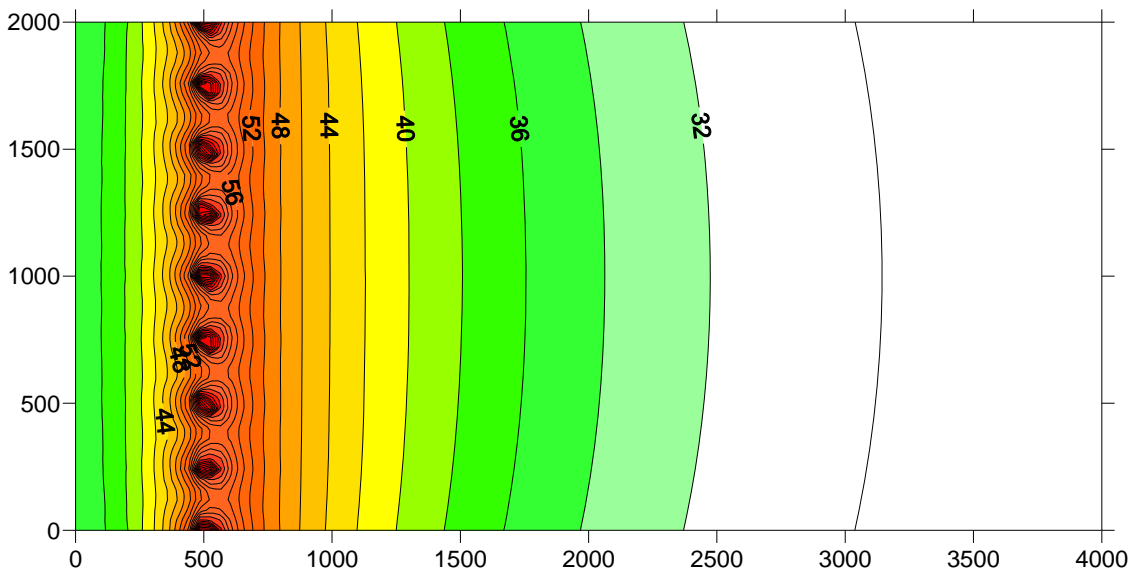
### 6.2.3 13 Wind Turbines in one line

Adding 8 more turbines in the 500m X-axes (a total of 13 turbines in one line), the cumulative impact further increases to more than **45.7 dBA** at the potential receptor (see **Figure 6-5**), a change of **2.8 dBA** from the 5 turbine situation (**Figure 6-3**).



**Figure 6-5: 13 WTGs operating, WTGs in one line on 500 m X-axes, worst case scenario**

Again soft ground conditions could significantly reduce sound propagation (**Figure 6-6**). As per the 5 wind turbine scenario, it must be observed that a cumulative impact can be identified in both of these scenarios (**Figure 6-5** and **Figure 6-6**).



**Figure 6-6: 13 WTGs operating. WTGs in one line on 500 m X-axes, more realistic case scenario**



### 6.2.4 Estimation of Impacts

This Scoping document, as well as the Environmental Noise Impact Assessment will focus on the impacts on the surrounding noise environment during times when a quiet environment is highly desirable. Noise limits should therefore be appropriate for the most noise-sensitive activity.

Noise-sensitive activities such as sleeping, or areas used for relaxation or other activities (places of worship, school, etc) should determine appropriate Zone Sound Levels. However, for this Scoping report the  $L_{Req,N}$  of **35dBA** as proposed by SANS 10103 is used.

The previous conceptual scenarios (worst case) illustrates the situation where atmospheric conditions are favorable for sound propagation, with the wind speeds above the cut-in speeds of the WTG, but before wind induced noises start to mask the noises from the WTG.

Depending on the background noise levels, total number of wind turbines to be constructed, their distance from potential sensitive receptors and the prevailing meteorological conditions, there might be potential receptors that could be affected by the facility. The potential impact from low frequency noises will only be considered during the EIA phase.

Applying the precautionary principle, due to the various unknowns and uncertainties, a first assessment of potential impacts is presented in **Table 6.1**.

**Table 6.1: Preliminary Impact Estimation: Operational Phase**

Component	Scenario 1	Scenario 2
<b>Magnitude</b>	Low to Medium. The noise will be a combination of the cumulative effects of 30 WTGs operating at night (see section 3.2 for nature of noise).	
<b>Spatial Extent</b>	Regional. In terms of the set definition, the noise could impact on receptors up to 2,000 kms from the boundary of the WEF (worst case scenario – wind blowing from WEF to receptor).	
<b>Potential Significance</b>	<b>Low to High. Based on the preliminary impact estimations, potential sensitive receptors closer than 2,000 meters could be impacted.</b>	



Once more information is available, this preliminary impact estimate can be reviewed. However, based on the current identified significance, further investigation is required.





## **7 CONCLUSIONS**

This report is a Scoping assessment of the predicted noise environment due to the development of the proposed Uyekraal wind Energy Facility on various farms near the town of Vredenburg. It is based on a desktop assessment as well as a predictive model (making use of the worst case scenario in terms of the precautionary approach, as well as a more realistic scenario) to identify potential issues of concern. This assessment indicated that the proposed project could have an impact of a low to high significance on the noise climate in the surrounding area in the unmanaged situation, as there are numerous potentially sensitive receptors within the area of influence.

Although no preliminary layout was available for evaluation (in terms of the potential noise impact), six scenarios were used to illustrate that a potential receptor could be impacted by the development Uyekraal WEF. It also indicated that the following information is critical in order to estimate the impact on potential receptors during the EIA phase:

1. For any modeling the total number of wind turbines proposed for the area should be considered (cumulative impact).
2. The total area over which the turbines are developed is important.
3. The number and location of receptors is critical (distance between the receptor and closest turbines).
4. Prevailing wind direction(s) and speed(s) are critical.
5. Existing background noise levels must be considered. This is because background ambient noise levels have been measured during previous field work ranging between 16 dBA (no wind or light winds) to more than 70 dBA (wind blowing at 17 m/s). With wind energy facilities only operating during windy periods, the SANS 10103 guideline is not strictly applicable.

However, with the implementation of mitigation measures, it would be possible to manage potential noise impacts to a more acceptable low significance.



## **8 RECOMMENDATIONS**

It is recommended that the potential noise impact associated with this Wind Energy Facility be investigated in more detail in the Environmental Impact Assessment phase. The following information is considered critical:

1. The prevailing night-time background ambient noise levels,
2. The available meteorological data,
3. The exact locations of the various WTGs in the WEF,
4. The full specifications of the WTGs,
5. The confirmation of the Potential Sensitive Receptors, and;
6. An overview of the equipment, processes and schedules for the construction phase.

The following work is planned for the Environmental Impact Assessment phase:

1. A site visit to obtain information regarding background noise levels, the prevailing meteorological conditions during this background noise level survey, as well as confirming and identifying potential sensitive receptors,
2. Currently identified (potential) sensitive receptors will be investigated during the EIA phase, and any additional receptors will be identified. Their relative sensitivity to noise impacts will be determined. This will be based on the SANS 10103 guideline, as well as current land uses on the properties (residential vs business/industrial).
3. Using the data (proposed processes, noise characteristics of the selected equipment, locations of the WTG) as provided by the project developer, the predicted impact of the WEF on receptors will be predicted using the CONCAWE method as recommended by SANS 10357:2004 for both the construction and operational phases.
4. Using the calculated noise levels at the identified sensitive receptors, the projected significance of WEF (whether construction or operational) will be determined using the criteria as proposed (subject to possible changes after any stakeholder input).



## 9 THE AUTHOR

The author of this report, M. de Jager (B. Ing (Chem), UP) graduated in 1998 from the University of Pretoria. He has been interested in acoustics since school days, doing projects mainly related to loudspeaker enclosure design. Interest in the matter brought him into the field of Environmental Noise Measurement, Prediction and Control. Since 2007 he has been involved with the following projects:

- Noise Impact Assessment for the Cookhouse Wind Energy Facility.
- Noise Impact Assessment for Skychrome (Pty) Ltd (A Ferro-chrome mine),
- Noise Impact Assessment for Mookimoo Chrome Mine (Western Chrome Mines),
- Noise Impact Assessment for Buffelsfontein East and West (Western Chrome Mines),
- Noise Impact Assessment for Elandsdrift (Sylvania),
- Noise Impact Assessment for Jagdlust Chrome Mine (Eastern Chrome Mines),
- Noise Impact Assessment Apollo Brick (Pty) Ltd (Clay mine and brick manufacturer).
- Noise Impact Assessment for the proposed expansion at Athur Taylor Collieries (X-Strata Coal SA).
- Noise Modelling for the Tweefontein Colliery, ERHCON.

The author is an independent consultant to the project, the developer as well as Savannah Environmental (Pty) Ltd. He,

- does not and will not have any financial interest in the undertaking of the activity, other than remuneration for work performed in terms of the Environmental Impact Assessment Regulations;
- have and will not have no vested interest in the proposed activity proceeding;
- have no, and will not engage in conflicting interests in the undertaking of the activity;
- undertake to disclose all material information collected, calculated and/or findings, whether favourable to the developer or not;
- will ensure that all information containing all relevant facts be included in this report.



## 10 REFERENCES

In this report reference was made to the following documentation:

1. Norton, M.P. and Karczub, D.G.: Fundamentals of Noise and Vibration Analysis for Engineers, Second Edition, 2003
2. SANS 0103:2004. 'The measurement and rating of environmental noise with respect to annoyance and to speech communication'.
3. SANS 0210:2004. 'Calculating and predicting road traffic noise'.
4. SANS 10328:2003. 'Methods for environmental noise impact assessments'.
5. SANS 0357:2004 The calculation of sound propagation by the Concave method'.
6. The Assessment and Rating of Noise from Wind Farms: Working Group on Noise from Wind Turbines, September 1996 – ETSU-97.



# **APPENDIX A**

## TYPICAL SOUND POWER LEVELS, VARIOUS TYPES OF EQUIPMENT



Frequency	63	125	250	500	1000	2000	4000
A-Weight Factor	-26.22	-16.19	-8.67	-3.25	0	1.2	0.96
Equipment / Process	Sound power level, dB re1 pW, in octave band, Hz						
Crusher	121.1	122.3	120.1	120	117.3	112.5	106.3
Mobile Crusher/Screen (Rock)	114.2	109.5	106.2	106	104.1	102.2	101
Crushing/Screening (Coal, small)	100.5	96.9	97.3	99.2	98.4	98.8	94.3
CAT D10 Bulldozer	118.3	115.2	111	109.1	107.5	103	97
CAT D11 Bulldozer	121.22	112.2	111.4	110.9	110.4	101.45	93.67
Front End Loader	105	117	113	114	111	107	101
Road Truck average	90	101	102	105	105	104	99
Drilling Machine	107.2	109.4	109.2	106.1	104.7	101.2	99.8
CAT Water Dozer	112.9	114.5	111.45	109.7	108.35	107.2	104
Excavator	110	112	118	105	106	99	95
Terex 30 ton haul dumper	102.4	105.3	108.9	108.8	108.2	105.1	99.2
Hitachi EX1200 Excavator	113.2	116	119.7	112.5	109.8	108.4	105.4
Cement truck (with cement)	104	107	106	108	107	105	102
Operational Hitachi Grader	107.7	107.9	106.8	106.2	104.2	101.1	97.2
Grader	100	111	108	108	106	104	98
Haul truck	107.9	113.2	116.9	114.4	110.6	106.8	100.2
Road Transport Reversing/Idling	108.2	104.6	101.2	99.7	105.4	100.7	98.7
Vesta V66, max	125.1	113.6	106.3	106.2	100.4	96.4	95.3
Vesta V66, ave	120.1	109.4	100.9	100.5	95.3	91.3	88.8
Vesta V66, min	114.4	104	94.84	94.8	87.5	83.3	80.7
Nordex N90 2.5MW at 4m/s	110.42	104.49	101.37	96.35	91.6	89.3	85.54
Nordex N90 2.5MW at 7m/s	117.92	111.99	108.87	103.85	99.1	96.8	93.04
Vestas V90 2.0 MW at 5m/s	105.9	100.7	97.2	94.8	94.1	91.7	89.7
Vestas V90 2.0 MW at 7m/s	111.4	106.9	102.2	99.5	98.7	96.3	94.2
RePower MM92 at 7.5m/s	109.25	107.41	105.63	101.9	96.73	89.81	83.09
General noise	100	100	103	105	105	100	100
CAT Rock Breaker	119.1	118.2	115.2	115.7	114.9	115.7	110.4
Crane	89	98	101	103	102	102	98
Portable Diesel Generator	96.7	99.5	101.2	97.4	91.3	89.6	81.1