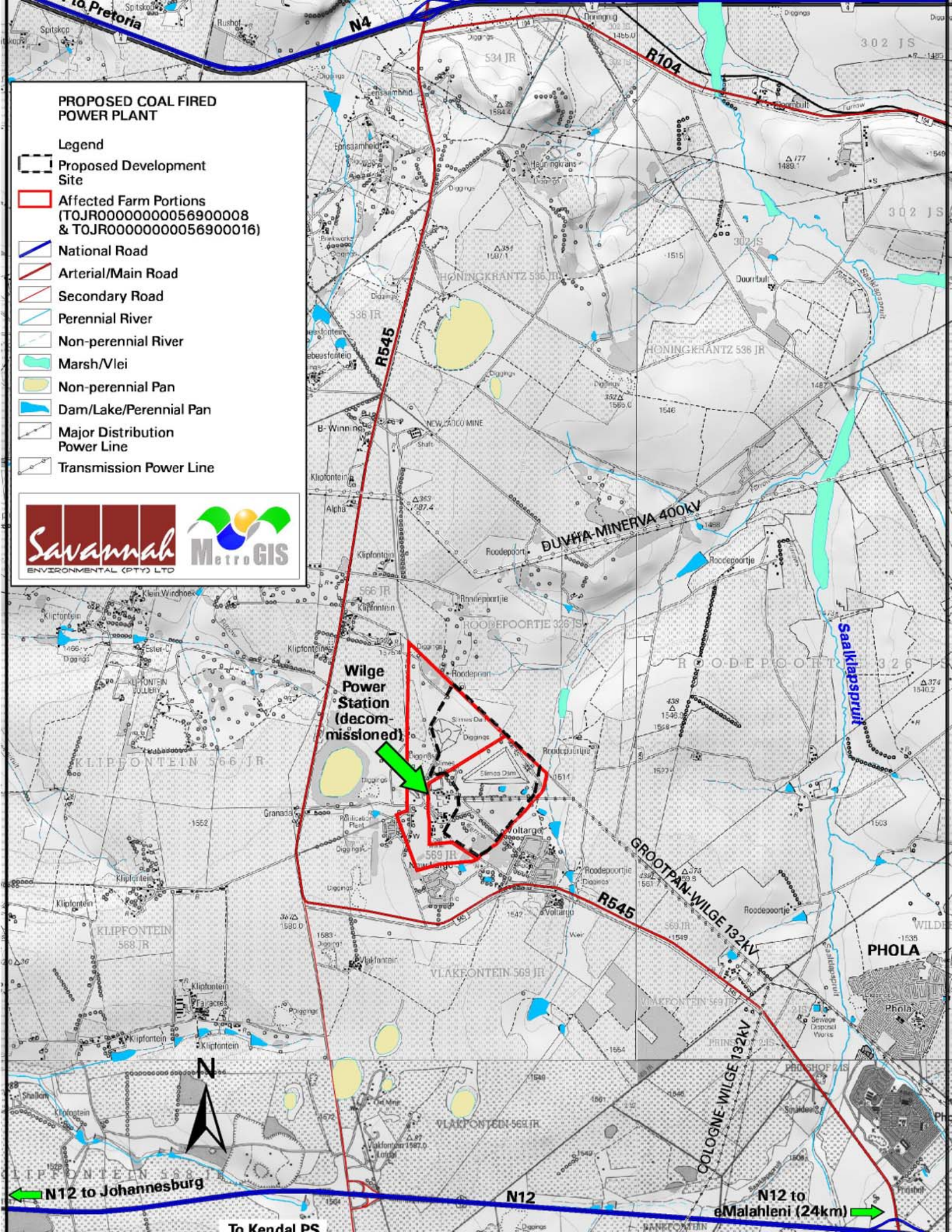


**PROPOSED COAL FIRED POWER PLANT**

**Legend**

-  Proposed Development Site
-  Affected Farm Portions (TOJR00000000056900008 & TOJR00000000056900016)
-  National Road
-  Arterial/Main Road
-  Secondary Road
-  Perennial River
-  Non-perennial River
-  Marsh/Vlei
-  Non-perennial Pan
-  Dam/Lake/Perennial Pan
-  Major Distribution Power Line
-  Transmission Power Line



**Wilge Power Station (decommissioned)**



N12 to Johannesburg

To Kendal PS

N12

N12 to eMalahleni (24km)