



## BPI for Palaeontological Research

---

Private Bag 3, WITS 2050, South Africa • Telephone +27 11 717-6682 • Fax +27 11 717-6694

3 October 2011

Email: [bruce.rubidge@wits.ac.za](mailto:bruce.rubidge@wits.ac.za)

Ravisha Ajodhaoersadh  
Savannah Environmental (Pty) Ltd  
Unit 606, 1410 Eglin Office Park, 14 Eglin Road, Sunninghill  
PO Box 148,  
Sunninghill,  
2157  
E-Mail: [ravisha@savannahsa.com](mailto:ravisha@savannahsa.com)

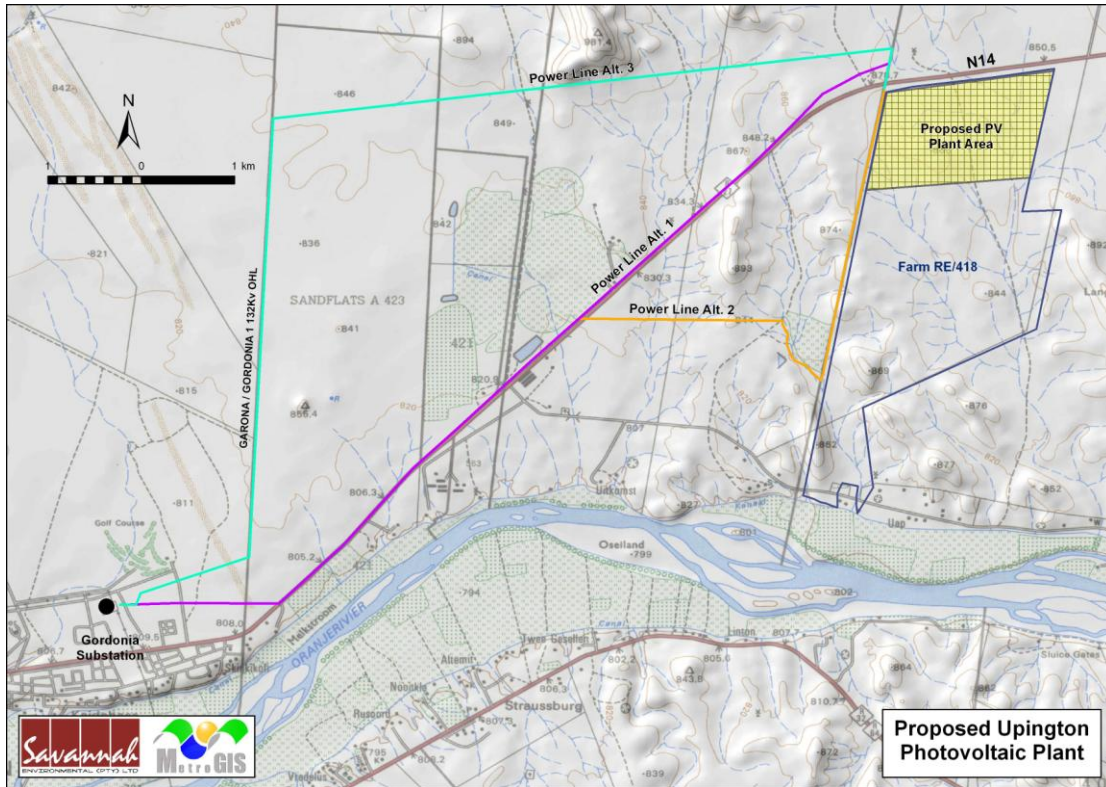
Dear Ravisha,

### **Proposed Photo Voltaic Plant, Upington, Northern Cape – Palaeontological Impact Assessment**

I have undertaken a desk top palaeontological impact analysis for the area which will be affected by the proposed Photovoltaic Plant and three alternative powerline courses to be sites east of Upington. The site will be situated on the farm Sandflats A 423. (Figure 1).

The entire area is situated on the Namaqua-Natal Metamorphic Province comprising Precambrian metamorphic rocks of the Dagbreek and Sultanoord formations which are exposed in places but in turn are covered by red aeolian sands of the Quaternary Gordonia Formation. The schists and quartzites of the Dagbreek and Sultanoord formations, which are Precambrian in age, are unlikely to contain fossils. There is slight but unlikely possibility of Quaternary fossils being present in the unconsolidated red sands of the Gordonia Formation.

In my opinion the chances of fossils being damaged in the process of development of the proposed photovoltaic facility and associated infrastructure are extremely limited. However because all sedimentary deposits have the potential to preserve fossils it is essential that if fossilized remains of plants or animals are encountered in the process of development a professional palaeontologist must be consulted so that the necessary rescue operations are implemented. Depending on the nature of the fossil discovered, this could entail excavation and removal to a registered palaeontological museum collection. A list of professional palaeontologists is available from South African Heritage Resources Agency (SAHRA).



**Figure 1:** Locality map for the proposed development

**Bibliography:**

Cornell DH, Thomas RJ, Moen HFG, Reid DL, Moore JM, and Gibson RL 2006. The Busveld Complex. *In: Johnson MR, Anhaeusser and Thomas RJ (Eds). The Geology of South Africa.* Geological Society of South Africa, Johannesburg/Council for Geoscience, Pretoria. pp 325-379.

McCarthy, T.S. and Rubidge, B.S. 2005. *The story of Earth and Life – a southern African perspective on the 4.6 billion year journey.* Struik Publishers, Cape Town. pp 333.

Partridge TC, Botha GA, and Haddon IG. 2006. Cenozoic deposits of the interior. *In: Johnson MR, Anhaeusser and Thomas RJ (Eds). The Geology of South Africa.* Geological Society of South Africa, Johannesburg/Council for Geoscience, Pretoria. pp. 585-604.

Yours sincerely

**Bruce Rubidge** - PhD, FGSSA, Pr Sci Nat