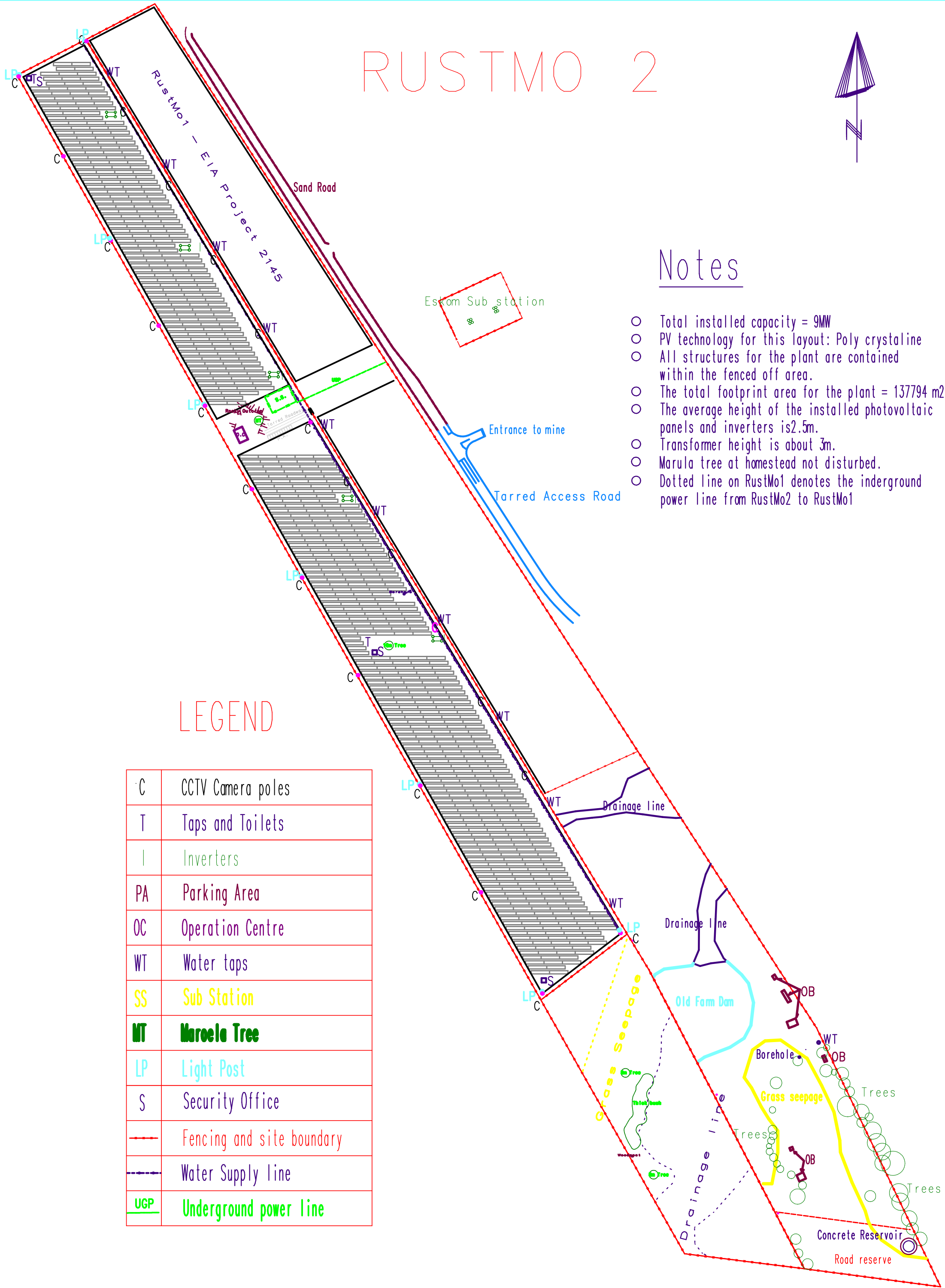


RUSTMO 2



Notes

- Total installed capacity = 9MW
- PV technology for this layout: Poly crystalline
- All structures for the plant are contained within the fenced off area.
- The total footprint area for the plant = 137794 m²
- The average height of the installed photovoltaic panels and inverters is 2.5m.
- Transformer height is about 3m.
- Marula tree at homestead not disturbed.
- Dotted line on RustMo1 denotes the inderground power line from RustMo2 to RustMo1

LEGEND

C	CCTV Camera poles
T	Taps and Toilets
I	Inverters
PA	Parking Area
OC	Operation Centre
WT	Water taps
SS	Sub Station
NT	Maroela Tree
LP	Light Post
S	Security Office
- - -	Fencing and site boundary
- - -	Water Supply line
UGP	Underground power line