

# **SOCIAL IMPACT ASSESSMENT**

## **PROPOSED RAMPHELE PHOTOVOLTAIC SOLAR ENERGY FACILITY RITCHIE, NORTHERN CAPE PROVINCE**

**OCTOBER 2011**

**Prepared for**

**SAVANNAH ENVIRONMENTAL (Pty) Ltd**

**By**

**Tony Barbour**

---

**Tony Barbour**

ENVIRONMENTAL CONSULTANT AND RESEARCHER

P O Box 1753, Sun Valley, 7975, South Africa

(Tel) 27-21-789 1112 - (Fax) 27-21-789 1112 - (Cell) 082 600 8266

(E-Mail) [tbarbour@telkomsa.net](mailto:tbarbour@telkomsa.net)

---

## **EXECUTIVE SUMMARY**

### **INTRODUCTION AND LOCATION**

Savannah Environmental (Pty) Ltd (hereafter referred to as Savannah Environmental) was appointed by Solar Capital (Pty) Ltd as the lead consultants to manage the Environmental Impact Assessment (EIA) process for the establishment of the proposed Ramphela Photovoltaic Solar Energy Facility (PSEF) and associated infrastructure. The proposed site is located within the Siyancuma Local Municipality (SLP) in the Northern Cape Province of South Africa, approximately 2 km and 40 km southwest of the towns of Ritchie and Kimberley respectively.

Tony Barbour was appointed by Savannah Environmental to undertake a specialist Social Impact Assessment (SIA) as part of the EIA process. The terms of reference for the study include a scoping level assessment to identify potential key social issues that would need to be addressed as part of the EIA. This report contains the findings of the Social Impact Assessment (Draft) undertaken as part of the EIA process.

### **DESCRIPTION OF THE PROPOSED SOLAR ENERGY FACILITY**

Solar Capital has identified the potential to establish a new PSEF with a generation capacity of 100 MW in the SLM in the Northern Cape Province of South Africa. The proposed site is located on Portion 10 of Farm Klipfontein and Farm Klipdrift 109. It is envisaged that the PSEF will be developed over two phases, with 50 MW developed during the first phase and the remaining 50 MW in the second phase.

Solar energy facilities, such as those using PV panels, use the energy from the sun to generate electricity through a process known as the Photovoltaic Effect. This effect refers to photons of light colliding with electrons, and therefore placing the electrons into a higher state of energy to create electricity. Solar PV facilities consist of the following components.

#### **The Photovoltaic Cell**

A photovoltaic (PV) cell is made of silicone which acts as a semiconductor used to produce the photovoltaic effect. Individual PV cells are linked and placed behind a protective glass sheet to form a photovoltaic panel.

#### **The Inverter**

The photovoltaic effect produces electricity in direct current. Therefore an inverter must be used to change it to alternating current.

#### **The Support Structure**

The PV panels will be fixed to a support structure set at an angle so as to receive the maximum amount of solar radiation. The angle of the panel is dependent on the latitude of the proposed facility and the angles may be adjusted to optimise for summer or winter solar radiation characteristics. The PV panels are designed to operate continuously for more than 20 years, unattended and with low maintenance.

The basic infrastructure associated with the proposed Ramphela PVSEF would include:

- PV solar panels with a generating capacity of ~ 100 MW which will be developed in two phases. It is envisaged that 50 MW will be developed in the first phase and 50 MW in the second phase;
- An on-site substation and short overhead power line to facilitate the connection between the PSEF and the Eskom Ritchie substation;
- Foundations to support the PV panels;
- Cabling between the project components, to be laid underground where practical;
- Internal access roads; and
- Workshop area for maintenance and storage.

## **APPROACH TO THE STUDY**

The approach to the SIA study is based on the Western Cape Department of Environmental Affairs and Development Planning Guidelines for Social Impact Assessment (February 2007). These guidelines are based on international best practice. The key activities in the SIA process embodied in the guidelines include:

- Describing and obtaining an understanding of the proposed intervention (type, scale, location), the communities likely to be affected and determining the need and scope of the SIA
- Collecting baseline data on the current social environment and historical social trends
- Identifying and collecting data on the Social Impact Assessment variables and social change processes related to the proposed intervention. This requires consultation with affected individuals and communities
- Assessing and documenting the significance of social impacts associated with the proposed intervention
- Identifying alternatives and mitigation measures

In this regard the study involved:

- Review of demographic data from the 2001 Census Survey
- Review of relevant planning and policy frameworks for the area
- Site specific information collected during the site visit to the area and interviews with key stakeholders
- Review of information from similar projects
- Identification of social issues associated with the proposed project

Due to the requirements for the generation of solar energy, no alternative sites were identified within the area. As such, the EIA does not assess any additional site alternatives for the project.

## **SUMMARY OF KEY FINDINGS**

The key findings of the study are summarised under the following sections:

- Fit with policy and planning
- Construction phase impacts
- Operational phase impacts
- Cumulative Impacts
- Decommissioning phase impacts

- No-development option

The potential health impacts associated with PVSEFs are also discussed.

### **Policy and planning issues**

The key documents reviewed included:

- The National Energy Act (2008);
- The White Paper on the Energy Policy of the Republic of South Africa (December 1998);
- The White Paper on Renewable Energy (November 2003);
- Integrated Resource Plan (IRP) for South Africa (2010-2030);
- Northern Cape Provincial Growth and Development Strategy (2004-2014);
- Pixley ka Seme District Municipality Integrated Development Plan 2009-2012;
- Siyancuma Local Municipality Integrated Development Plan 2010.

The findings of the review indicated that solar energy is strongly supported at a national, provincial, and local level. Based on this the establishment of the proposed Ramphela PVSEF is supported by the relevant policy and planning documentation.

### **Construction phase**

The key social issues associated with the construction phase include:

#### **Potential positive impacts**

- Creation of employment and business opportunities, and the opportunity for skills development and on-site training.

The construction phase is expected to extend over a period of 12 months and create approximately 750 employment opportunities at peak construction. It is anticipated that approximately 80% (600) of the employment opportunities will be available to low skilled (construction labourers, security staff etc.), 10% (75) to semi-skilled workers (drivers, equipment operators etc.) and 10% (75) to skilled personnel (engineers, land surveyors, project managers etc.). The majority of the employment opportunities, specifically the skilled and semi-skilled opportunities, are likely to be available to local residents in the area, specifically residents from Ritchie, Douglas and Kimberly. The majority of the beneficiaries are likely to be historically disadvantaged (HD) members of the community. This would represent a significant positive social benefit in an area with limited employment opportunities. However, the low education and skills levels in the area will hamper potential opportunities for local communities.

The total wage bill for the 12 month construction phase will be in the region of R 35 million. The injection of income into the area in the form of rental for accommodation and wages will create opportunities for local businesses in De Aar Britstown and Hanover. The sector of the local economy that is most likely to benefit from the proposed development is the local service industry. The potential opportunities for the local service sector would be linked to accommodation, catering, cleaning, transport and security, etc. associated with the construction workers on the site. The benefits to the local economy will however be confined to the construction period (6-12 months).

In terms of training, the proponent has indicated that they have linked up with a local South African University to establish a Solar Academy to address the issue of

skills development and training. The contractors appointed during the construction phase are also likely to provide on-site training and skills development opportunities. However, the majority of benefits are likely to accrue to personnel employed by the relevant contractors. In the absence of specific commitments from the developer to employ local contractors the potential for meaningful skills development and training for members from the local communities may be limited.

**Potential negative impacts**

- Impacts associated with the presence of construction workers on site
- Influx of job seekers to the area;
- Loss of farm labour to the construction phase;
- Increased risk of stock theft, poaching and damage to farm infrastructure associated with presence of construction workers on the site;
- Increased risk of veld fires associated with construction-related activities;
- Impact of heavy vehicles, including damage to roads, safety, noise and dust;
- Potential loss of grazing land associated with construction-related activities.

The significance of the potential negative impacts with mitigation was assessed to be of Low significance. The majority of the potential negative impacts can therefore be effectively mitigated if the recommended mitigation measures are implemented. In addition, given that the majority of the low and semi-skilled construction workers can be sourced from the local area the potential risk to local family structures and social networks is regarded as low. However, the impact on individuals who are directly impacted on by construction workers and or job seekers (i.e. contract HIV/AIDS) was assessed to be of Medium-High negative significance.

Table 1 summarises the significance of the impacts associated with the construction phase.

**Table 1: Summary of social impacts during construction phase**

<b>Impact</b>	<b>Significance No Mitigation</b>	<b>Significance With Mitigation</b>
<b>Creation of employment and business opportunities</b>	Low (Positive impact)	High (Positive impact)
<b>Presence of construction workers and potential impacts on family structures and social networks</b>	Low (Negative impact for community as a whole) Medium-High (Negative impact of individuals)	Low (Negative impact for community as a whole) Medium-High (Negative impact of individuals)
<b>Influx of job seekers</b>	Low (Negative impact for community as a whole) Medium-High (Negative impact of individuals)	Low (Negative impact for community as a whole) Medium-High (Negative impact of individuals)
<b>Loss of farm labour</b>	Low (Negative impact)	Low (Negative impact)
<b>Risk of stock theft, poaching and damage to farm infrastructure</b>	Medium (Negative impact)	Low (Negative impact)

<b>Risk of veld fires</b>	Medium (Negative impact)	Low (Negative impact)
<b>Impact of heavy vehicles and construction activities</b>	Low (Negative impact)	Low (Negative impact)
<b>Loss of farmland</b>	High (Negative impact)	Low (Negative impact)

### **Operational phase**

The key social issues affecting the operational phase include:

#### **Potential positive impacts**

- Creation of employment and business opportunities. The operational phase will also create opportunities for skills development and training;
- The establishment of infrastructure to generate renewable energy.

The total number of permanent employment opportunities is estimated to be in the region of 55. Of this total ~ 90% (50) fall within the low and semi-skilled category. The majority of the beneficiaries are therefore likely to be historically disadvantaged (HD) members of the community. Given the location of the proposed facility the majority of permanent staff is likely to come from Ritchie and Kimberly.

The proposed development also represents an investment in infrastructure for the generation of clean, renewable energy, which, given the challenges created by climate change, represents a Positive High social benefit for society as a whole. 1.5% of project revenue will also be allocated to local social and economic development. This amounts to ~ R11 million per annum over the 20 year life of the plant. This revenue will be allocated to local projects, specifically community health (33.3%), local economic development and support of BBBEE initiatives (33.3%) and education (33.3%).

#### **Potential negative impacts**

- The visual impacts and associated impact on sense of place;
- Potential impact on tourism.

The visual impacts on landscape character associated with large renewable energy facilities, such as PVSEFs, are highlighted in the research undertaken by Warren and Birnie (2009). In the South African context, the majority of South Africans have a strong connection with and affinity for the large, undisturbed open spaces that are characteristic of the South African landscape. The impact of large, solar energy plants on the landscape is therefore likely to be a key issue in South Africa, specifically given South African's strong attachment to the land and the growing number of solar energy applications.

The significance of the impacts associated with the operational phase are summarised in Table 2.

**Table 2: Summary of social impacts during operational phase**

<b>Impact</b>	<b>Significance No Mitigation</b>	<b>Significance With Mitigation</b>
<b>Creation of employment and business opportunities</b>	Medium (Positive impact)	High (Positive impact)
<b>Promotion of renewable energy projects</b>	Medium (Positive impact)	High (Positive impact)
<b>Visual impact and impact on sense of place</b>	Medium (Negative impact)	Medium (Negative impact)
<b>Impact on tourism</b>	Low (Positive and Negative)	Low (Positive and Negative)

### **Cumulative Impacts**

The cumulative impacts associated with solar energy facilities, such as the proposed Ramphele PVSEF, are largely linked to the impact on sense of place and visual impacts. In the case of the proposed Ramphele PVSEF the significance of the potential cumulative social impacts, specifically the impact on the landscape, was rated to be low.

However, it is recommended that the environmental authorities consider the overall cumulative impact on the rural character and the areas sense of place before a final decision is taken with regard to the optimal number of PVSEFs in the area. In addition, the siting and number of individual components of the plant should be informed by findings of the relevant VIAs, specifically with respect to the visual impact on farmsteads and important roads in the area.

### **Transmission lines**

The findings of the SIA indicate that the impacts associated with the proposed overhead power line will be low.

### **Potential health impacts**

The primary environmental, health, and safety issues associated with solar energy involve how they are manufactured, installed, and ultimately disposed of. In particular, the manufacturing of photovoltaic cells often requires hazardous materials such as arsenic and cadmium. Even relatively inert silicon, a major material used in solar cells, can be hazardous to workers if it is breathed in as dust. Workers involved in manufacturing photovoltaic modules and components must consequently be protected from exposure to these materials. However, none of these potential hazards is much different in nature and or magnitude from the innumerable hazards people face routinely in an industrial society. Through effective regulation, the dangers can very likely be kept at a very low level. In addition, the relevant risks essentially concern workers at the cell manufacturing plant and therefore fall outside the scope of the EIA.

### **No-Development Option**

The No-Development option would represent a lost opportunity for South Africa to supplement its current energy needs with clean, renewable energy. Given South Africa's position as one of the highest per capita producer of carbon emissions in the world, this would represent a High negative social cost.

The no-development option also represents a lost opportunity in terms of the employment and business opportunities and revenue generated for community development. This also represents a negative social cost.

### **Decommissioning phase**

Typically, the major social impacts associated with the decommissioning phase are linked to the loss of jobs and associated income. This has implications for the households who are directly affected, the communities within which they live, and the relevant local authorities. However, in the case of the PVSEFs decommissioning phase is likely to involve the disassembly and replacement of the existing components with more modern technology. This is likely to take place in the 25-30 years post commissioning. The decommissioning phase is therefore likely to create additional, construction type jobs, as opposed to the jobs losses typically associated with decommissioning.

Given the relatively small number of people employed during the operational phase (~55), decommissioning of the facility will not have a significant a negative social impact on the local community. In addition, the potential impacts associated with the decommissioning phase can also be effectively managed with the implementation of a retrenchment and downscaling programme. With mitigation, the impacts are assessed to be Low (negative).

Solar Capital should also investigate the option of establishing an Environmental Rehabilitation Trust Fund to cover the costs of decommissioning and rehabilitation of disturbed areas. The Trust Fund should be funded by a percentage of the revenue generated from the sale of energy to the national grid over the 25-30 year operational life of the facility. The rationale for the establishment of a Rehabilitation Trust Fund is linked to the experiences with the mining sector in South Africa and failure of many mining companies to allocate sufficient funds during the operational phase to cover the costs of rehabilitation and closure.

## **RECOMMENDATIONS**

The findings of the SIA indicate that the development of the proposed Ramphele PVSEF will create employment and business opportunities for locals during both the construction and operational phase of the project. The mitigation measures listed in the report should be implemented in order to enhance them. Solar Capital has also indicated that 1.5% of project revenue will be allocated to local social and economic development. This amounts to ~ R11 million per annum over the 20 year life of the plant. This represents a significant and sustained source of income for local social and economic development.

The proposed development also represents an investment in clean, renewable energy infrastructure, which, given the challenges created by climate change, represents a positive social benefit for society as a whole. The establishment of the proposed Ramphele PVSEF is therefore supported by the findings of the SIA.

However, the potential impacts associated with solar energy facilities on an areas sense of place and landscape cannot be ignored. These impacts are an issue that will need to be addressed by the relevant environmental authorities, specifically given the large number of applications for solar facilities that have been submitted over the last 12 months.

## **IMPACT STATEMENT**

The findings of the SIA undertaken for the proposed Ramphele PVSEF indicate that the development will create employment and business opportunities for locals during both the construction and operational phase of the project. The proposed development also represents an investment in clean, renewable energy infrastructure, which, given the challenges created by climate change, represents a positive social benefit for society as a whole.

However, the visual impacts associated with facility will impact on the areas rural sense of place and landscape character. This impact will be for the entire operational lifespan (approximately 25-30 years) of the facility. The potential for cumulative impacts also exists due to the large number of applications for solar energy facilities in the area. However, these impacts are not considered to represent a fatal flaw. It is therefore recommended that the facility as proposed be supported, subject to the implementation of the recommended mitigation measures and management actions contained in the report.

## TABLE OF CONTENTS

---

EXECUTIVE SUMMARY .....	i
SECTION 1: INTRODUCTION.....	1
1.1 INTRODUCTION.....	1
1.2 TERMS OF REFERENCE.....	3
1.3 PROJECT LOCATION .....	3
1.4 PROJECT DESCRIPTION.....	3
1.5 APPROACH TO STUDY .....	6
1.5.1 Definition of social impacts.....	6
1.5.2 Timing of social impacts.....	7
1.6 ASSUMPTIONS AND LIMITATIONS .....	7
1.6.1 Assumptions .....	7
1.6.2 Limitations.....	8
1.7 SPECIALIST DETAILS.....	8
1.8 DECLARATION OF INDEPENDENCE.....	9
1.9 REPORT STRUCTURE .....	9
SECTION 2: DESCRIPTION OF STUDY AREA.....	10
2.1 INTRODUCTION .....	10
2.2 ADMINISTRATIVE CONTEXT.....	10
2.3 PROVINCIAL CONTEXT.....	10
2.4 SOCIO-ECONOMIC OVERVIEW OF THE PROPOSED PROJECT AREA .....	14
3.2.1 Pixley ka Seme District Municipality .....	15
3.2.2 Sol Plaatjie Local Municipality .....	19
2.6 SURROUNDING LAND USES .....	20
SECTION 3: POLICY AND PLANNING CONTEXT .....	26
3.1 INTRODUCTION .....	26
3.2 NATIONAL LEVEL ENERGY POLICY .....	26
3.2.1 NATIONAL ENERGY ACT (ACT No 34 OF 2008) .....	26
3.2.2 White Paper on the Energy Policy of the Republic of South Africa .....	26
3.2.3 White Paper on Renewable Energy.....	27
3.2.4 Integrates Resource Plan for Electricity (2010-2030).....	28
3.3 PROVINCIAL LEVEL POLICY AND PLANNING .....	30
3.3.1 Northern Cape Province Provincial Growth and Development Strategy .....	30
3.4 DISTRICT LEVEL PLANNING AND SPATIAL POLICY CONTEXT .....	32
3.4.1 Pixley ka Seme District Municipality Integrated Development Plan 2009-2012.....	32
3.5 MUNICIPAL LEVEL PLANNING AND SPATIAL POLICY CONTEXT .....	34
3.5.1 Sol Plaatjie Local Municipality Integrated Development Plan (2010).....	34
3.6 INTERNATIONAL EXPERIENCE WITH SOLAR ENERGY PLANTS .....	34
SECTION 4: ASSESSMENT OF KEY SOCIAL ISSUES.....	35
4.1 INTRODUCTION .....	35
4.2 IDENTIFICATION OF KEY SOCIAL ISSUES.....	35
4.3 POLICY AND PLANNING ISSUES .....	35
4.4 SOCIAL IMPACTS ASSOCIATED WITH THE CONSTRUCTION PHASE.....	37
4.4.1 Creation of employment and business opportunities.....	37
4.4.2 Presence of construction workers in the area .....	40
4.4.3 Influx of job seekers to the area.....	42
4.4.4 Loss of farm labour to the construction phase .....	44

4.4.5	Increased risk of stock theft, poaching and damage to farm infrastructure .....	46
4.4.6	Increased risk of veld fires .....	47
4.4.7	Impact of construction vehicles .....	49
4.4.8	Damage to and loss of farmland .....	50
4.5	SOCIAL IMPACTS ASSOCIATED WITH OPERATIONAL PHASE.....	52
4.5.1	Creation of employment and business opportunities.....	52
4.5.2	Development of clean, renewable energy infrastructure .....	54
4.5.3	Visual impact and impact on sense of place .....	55
4.5.4	Impact on tourism .....	57
4.6	ASSESSMENT POWER LINE OPTIONS .....	58
4.7	POTENTIAL HEALTH IMPACTS .....	59
4.8	ASSESSMENT OF NO-DEVELOPMENT OPTION .....	60
4.9	ASSESSMENT OF CUMULATIVE IMPACTS .....	61
4.10	ASSESSMENT OF DECOMMISSIONING PHASE .....	63
	SECTION 5: KEY FINDINGS AND RECOMMENDATIONS .....	64
5.1	INTRODUCTION .....	64
5.2	SUMMARY OF KEY FINDINGS .....	64
5.2.1	Policy and planning issues .....	64
5.2.2	Construction phase .....	65
5.2.3	Operational phase .....	66
5.2.4	Assessment of cumulative impacts .....	67
5.2.5	Transmission line options .....	68
5.2.6	Potential health impacts.....	68
5.2.7	Assessment of no-development option .....	68
5.2.8	Decommissioning phase.....	68
5.3	CONCLUSIONS AND RECOMMENDATIONS.....	69
5.4	IMPACT STATEMENT .....	69
	ANNEXURE A .....	71
	ANNEXURE B .....	72
	ANNEXURE C .....	74

---

# SECTION 1: INTRODUCTION

---

## 1.1 INTRODUCTION

Savannah Environmental (Pty) Ltd (hereafter referred to as Savannah Environmental) was appointed by Solar Capital (Pty) Ltd as the lead consultants to manage the Environmental Impact Assessment (EIA) process for the establishment of the proposed Ramphele Photovoltaic Solar Energy Facility (PSEF) and associated infrastructure. The proposed site is located within the Siyancuma Local Municipality (SLP) in the Northern Cape Province of South Africa, approximately 2 km and 40 km southwest of the towns of Ritchie and Kimberley respectively (Figure 1.1). The SLP is located within the Pixley ka Seme District Municipality (PKSDM) (Figure 1.2 and 1.3)

Tony Barbour was appointed by Savannah Environmental to undertake a specialist Social Impact Assessment (SIA) as part of the EIA process. The terms of reference for the study include a scoping level assessment to identify potential key social issues that would need to be addressed as part of the EIA. This report contains the findings of the Social Impact Assessment (Draft) undertaken as part of the EIA process.

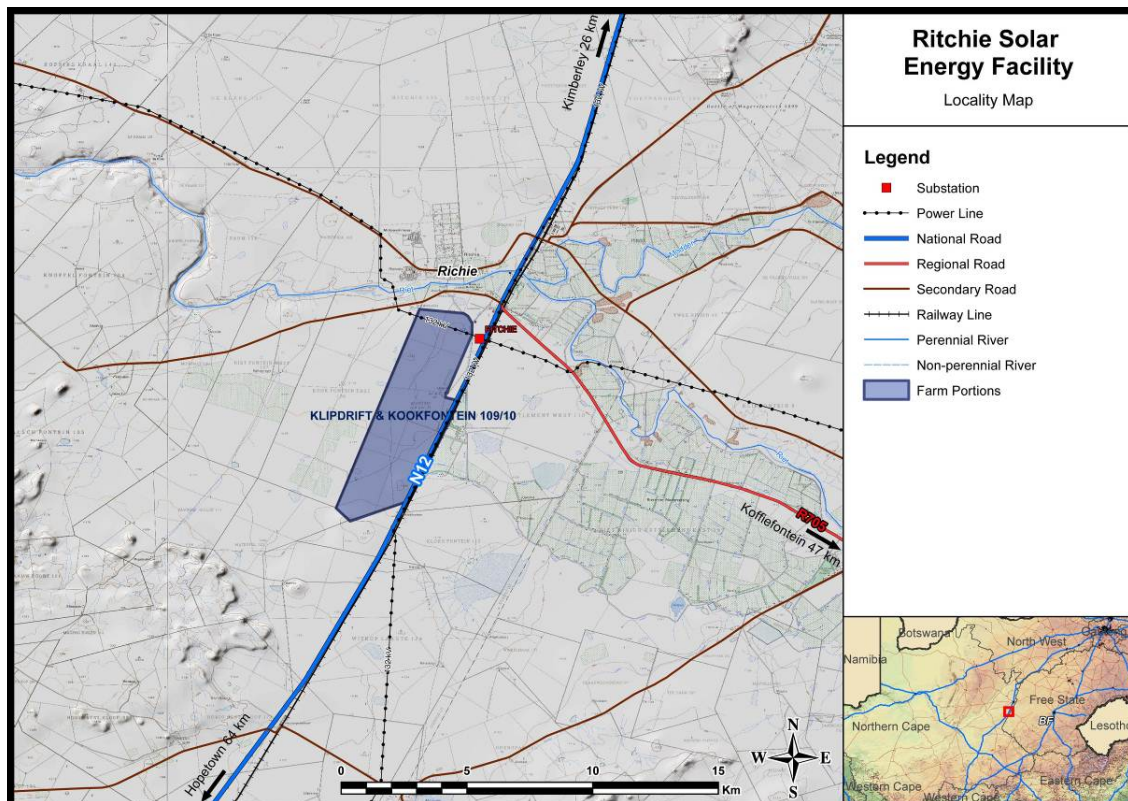
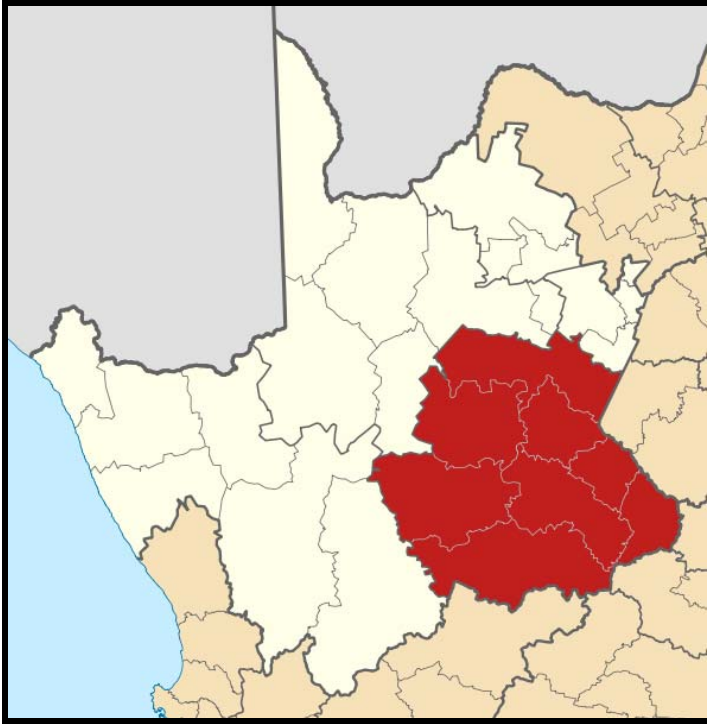


Figure 1.1: Location of the proposed Ramphele (Ritchie) PSEF site



**Figure 1.2: Location of Pixley ka Seme District Municipality within the Northern Cape Province**



**Figure 1.3: Location of Siyancuma Local Municipality within the Northern Cape Province**

## 1.2 TERMS OF REFERENCE

The terms of reference for the SIA require:

- A description of the environment that may be affected by the activity and the manner in which the environment may be affected by the proposed facility
- A description and assessment of the potential social issues associated with the proposed facility
- Identification of enhancement and mitigation aimed at maximising opportunities and avoiding and or reducing negative impacts

## 1.3 PROJECT LOCATION

The site is located to the west of the N12 (which links Kimberly and Cape Town), ~40 km south west of the town of Kimberly and 2 km south of the small town of Ritchie (approximately 10 000 people), which is located along the northern bank of the Modder River.

## 1.4 PROJECT DESCRIPTION

Solar Capital has identified the potential to establish a new PSEF with a generation capacity of 100 MW in the SLM in the Northern Cape Province of South Africa. The proposed site is located on Portion 10 of Farm Kookfontein and Farm Klipdrift 109. It is envisaged that the PSEF will be developed over two phases, with 50 MW developed during the first phase and the remaining 50 MW in the second phase. The EIA will consider the components associated with the full 100 MW capacity of the project.

An area of approximately 1970 ha is being considered for the establishment of the proposed PSEF and associated infrastructure. The proposed facility will accommodate an array (Photograph 1.1) of photovoltaic (PV) panels with a generating capacity of up to 100 MW.



**Photograph 1.1: Example of Photovoltaic array (Source: [www.wapa.gov](http://www.wapa.gov))**

Solar energy facilities, such as those using PV panels, use the energy from the sun to generate electricity through a process known as the Photovoltaic Effect. This effect refers to photons of light colliding with electrons, and therefore placing the electrons into a higher state of energy to create electricity. Solar PV facilities consist of the following components:

### **The Photovoltaic Cell**

A photovoltaic (PV) cell is made of silicone which acts as a semiconductor used to produce the photovoltaic effect. Individual PV cells are linked and placed behind a protective glass sheet to form a photovoltaic panel.

### **The Inverter**

The photovoltaic effect produces electricity in direct current. Therefore an inverter must be used to change it to alternating current.

### **The Support Structure**

The PV panels are fixed to a support structure set at an angle so to receive the maximum amount of solar radiation. The angle of the panel is dependent on the latitude of the proposed facility and the angles may be adjusted to optimise for summer or winter solar radiation characteristics. The PV panels are designed to operate continuously for more than 20 years, unattended and with low maintenance.

The basic infrastructure associated with the proposed Ramphela PSEF would include:

- PV solar panels with a generating capacity of ~ 100 MW which will be developed in two phases. It is envisaged that 50 MW will be developed in the first phase and 50 MW in the second phase (Figure 1.4);
- An on-site substation and short overhead power line to facilitate the connection between the PSEF and the Eskom Ritchie substation;
- Foundations to support the PV panels;
- Cabling between the project components, to be laid underground where practical;
- Internal access roads; and
- Workshop area for maintenance and storage.

The overall aim of the design and layout of the facility is to maximise electricity production through exposure to the solar radiation, while minimising infrastructure, operation and maintenance costs, and social and environmental impacts. The use of solar energy for power generation can be described as a non-consumptive use of natural resources which emits zero greenhouse gas emissions. The generation of renewable energy contributes to South Africa's electricity generating market which has been dominated by coal-based power generation.

Based on the information provided by Solar Capital the construction phase is expected to extend over a period of 12 month months and create ~ 700 employment opportunities during peak construction. The total capital expenditure associated with the construction phase will be ~ R 2.3 billion. The operational phase is expected to create approximately 55 employment opportunities for a period of 20-30 years.

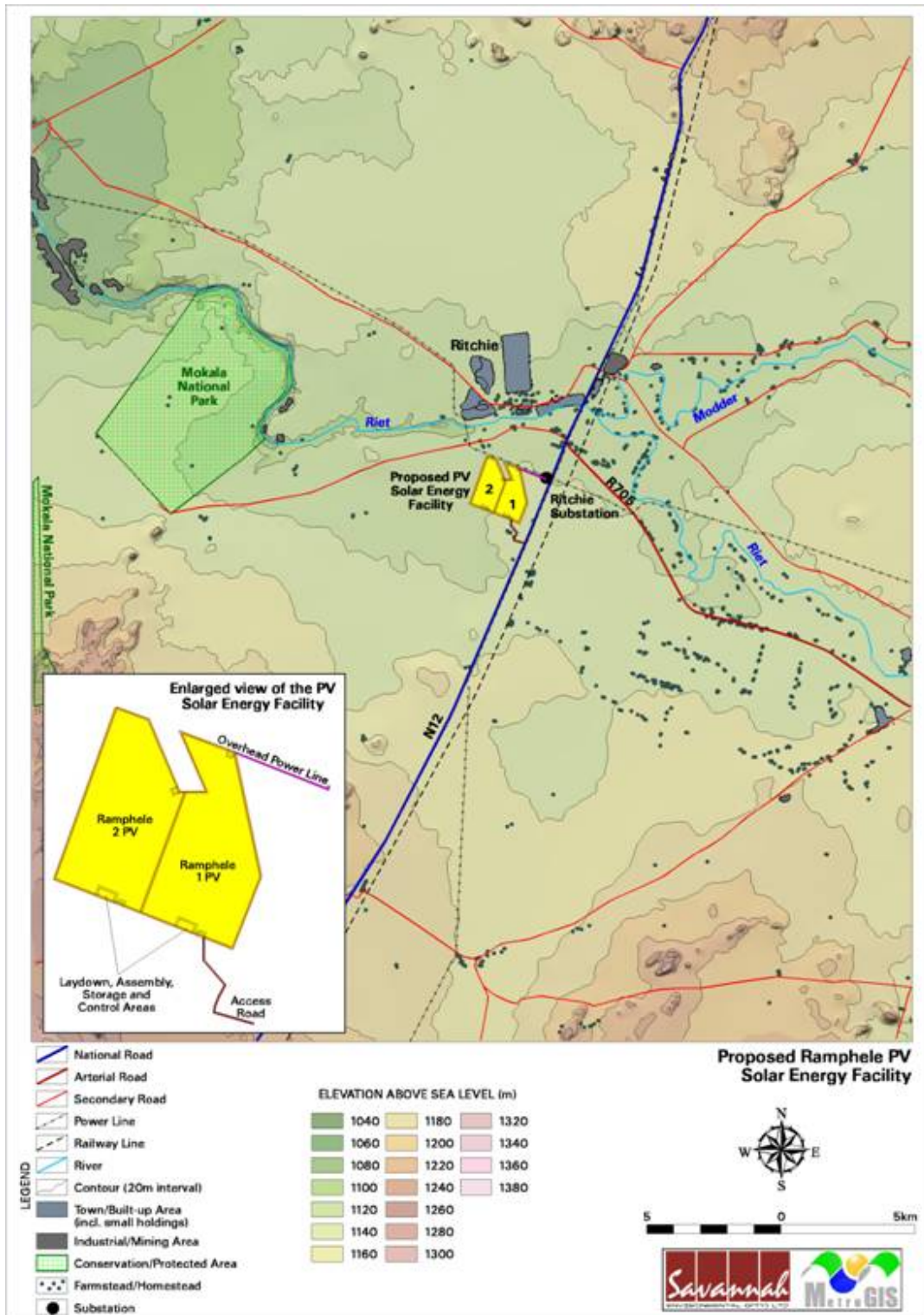


Figure 1.4: Location of proposed phases of the PVSEF on the site

## 1.5 APPROACH TO STUDY

The approach to the SIA study is based on the Western Cape Department of Environmental Affairs and Development Planning Guidelines for Social Impact Assessment (February 2007). These guidelines are based on international best practice. The key activities in the SIA process embodied in the guidelines include:

- Describing and obtaining an understanding of the proposed intervention (type, scale, location), the settlements and communities likely to be affected by the proposed project
- Collecting baseline data on the current social and economic environment;
- Identifying the key potential social issues associated with the proposed project. This requires a site visit to the area and consultation with affected individuals and communities. As part of the process a basic information document was prepared and made available to key interested and affected parties. The aim of the document was to inform the affected parties of the nature and activities associated with the construction and operation of the proposed development so as to enable them to better understand and comment on the potential social issues and impacts
- Assessing and documenting the significance of social impacts associated with the proposed intervention
- Identifying alternatives and mitigation measures

In this regard the study involved:

- Review of demographic data from the 2001 Census Survey;
- Review of relevant planning and policy frameworks for the area;
- Site specific information collected during the site visit to the area and interviews with interested and affected parties;
- Review of information from similar studies, including the EIAs undertaken for other renewable energy projects, including wind energy facilities;
- Identification and assessment of the social issues associated with the proposed project.

The identification of potential social issues associated with proposed facility is based on observations during the project site visit, review of relevant documentation, experience with similar projects and the area. Annex A contains a list of the secondary information reviewed and interviews conducted. Annex B summarises the assessment methodology used to assign significance ratings to the assessment process.

### 1.5.1 Definition of social impacts

Social impacts can be defined as “The consequences to human populations of any public or private actions (these include policies, programmes, plans and/or projects) that alter the ways in which people live, work, play, relate to one another, organise to meet their needs and generally live and cope as members of society. These impacts are felt at various levels, including individual level, family or household level, community, organisation or society level. Some social impacts are felt by the body as a physical reality, while other social impacts are perceptual or emotional” (Vanclay, 2002).

When considering social impacts it is important to recognise that social change is a natural and on-going process (Burdge, 1995). However, it is also important to recognise and understand that policies, plans, programmes, and/or projects implemented by government departments and/or private institutions have the potential to influence and alter both the *rate* and *direction* of social change. Many social impacts are not in themselves “impacts” but change process that may lead to social impacts (Vanclay, 2002). For example the influx of temporary construction workers is in itself not a social impact. However, their presence can result in range of social impacts, such as increase in antisocial behaviour. The approach adopted by Vanclay stresses the importance of understanding the processes that can result in social impacts. It is therefore critical for social assessment specialists to think through the complex causal mechanisms that produce social impacts. By following impact pathways, or causal chains, and specifically, by thinking about interactions that are likely to be caused, the full range of impacts can be identified (Vanclay, 2002).

An SIA should therefore enable the authorities, project proponents, individuals, communities, and organisations to understand and be in a position to identify and anticipate the potential social consequences of the implementation of a proposed policy, programme, plan, or project. The SIA process should alert communities and individuals to the proposed project and possible social impacts, while at the same time allowing them to assess the implications and identify potential alternatives. The assessment process should also alert proponents and planners to the likelihood and nature of social impacts and enable them to anticipate and predict these impacts in advance so that the findings and recommendations of the assessment are incorporated into and inform the planning and decision-making process.

However, the issue of social impacts is complicated by the way in which different people from different cultural, ethnic, religious, gender, and educational backgrounds etc view the world. This is referred to as the “social construct of reality”. The social construct of reality informs people’s worldview and the way in which they react to changes.

### **1.5.2 Timing of social impacts**

Social impacts vary in both time and space. In terms of timing, all projects and policies go through a series of phases, usually starting with initial planning, followed by implementation (construction), operation, and finally closure (decommissioning). The activities, and hence the type and duration of the social impacts associated with each of these phases are likely to differ.

## **1.6 ASSUMPTIONS AND LIMITATIONS**

### **1.6.1 Assumptions**

#### **Strategic importance of the project and no-go option**

It is assumed that the strategic importance of promoting renewable energy, including solar energy, is supported by the national and provincial energy policies.

#### **Technical suitability**

It is assumed that the development site identified by Solar Capital represents a technically suitable site for the establishment of a PVSEF.

### **Fit with planning and policy requirements**

Legislation and policies reflect societal norms and values. The legislative and policy context therefore plays an important role in identifying and assessing the potential social impacts associated with a proposed development. In this regard a key component of the SIA process is to assess the proposed development in terms of its fit with key planning and policy documents. As such, if the findings of the study indicate that the proposed development in its current format does not conform to the spatial principles and guidelines contained in the relevant legislation and planning documents, and there are no significant or unique opportunities created by the development, the development cannot be supported.

However, the study recognises the strategic importance of solar energy and the technical, spatial and land use constraints required for such facilities.

### **Generic issues relating to renewable energy**

A number of the key authorities in the Northern Cape Province have been interviewed as part of the SIAs for other solar energy projects. For the purpose of the Ramphele SIA it is assumed that the generic comments relating to renewable energy, and specifically solar energy, also apply to the Ramphele PVSEF.

### **1.6.2 Limitations**

#### **Demographic data**

The demographic data used in the study is largely based on the 2001 Census<sup>1</sup>. While this data does provide useful information on the demographic profile of the affected area, the data are dated and should be treated with care. Where possible reference is made to the latest demographic data contained in local Integrated Development Plans and other documents.

In addition, there is no longer any access to Census 2001 data at Ward level via the Municipal Demarcation Board. As such, the social baseline for the Siyancuma Local Municipality has been described at Local Municipal level only.

## **1.7 SPECIALIST DETAILS**

The author of this report is an independent specialist with 20 years of experience in the field of environmental management. His qualifications include a BSc, BEcon (Hons) and an MSc in Environmental Science. In terms of SIA experience Tony Barbour has undertaken in the region of 120 SIA's and is the author of the Guidelines for Social Impact Assessments for EIA's adopted by the Department of Environmental Affairs and Development Planning (DEA&DP) in the Western Cape in 2007.

---

<sup>1</sup> The last comprehensive national census was conducted in 2001. Census 2001 provided demographic and socio-economic data from National to Municipal Ward level. An interim Community Survey (sample based) was undertaken in 2007, but provided information only on provincial and municipal levels. The next comprehensive national census is planned for 2011.

## **1.8 DECLARATION OF INDEPENDENCE**

This confirms that Tony Barbour the specialist consultant responsible for undertaking the study and preparing the Draft SIA Report, are independent and do not have vested or financial interests in the proposed Ramphele PVSEF being either approved or rejected.

## **1.9 REPORT STRUCTURE**

The report is divided into five sections, namely:

- Section 1: Introduction
- Section 2: Overview of the study area
- Section 3: Summary of key policy and planning documents relating to solar energy and the area in question
- Section 4: Identification and assessment of key social issues
- Section 5: Summary of key findings and recommendations

---

## **SECTION 2: DESCRIPTION OF STUDY AREA**

---

### **2.1 INTRODUCTION**

Section 2 provides an overview of:

- The administrative context;
- The provincial context;
- The policy and planning environment affecting the proposed PVSEF;
- The local socio-economic environment;
- Surrounding land uses.

### **2.2 ADMINISTRATIVE CONTEXT**

The proposed site is located in the Siyancuma Local Municipality (SLM) which is one of eight local municipalities and a district management area that make up the Pixley ka Seme District Municipality (PKSDM) (NCDC7), which is located in the south-east of the Northern Cape Province. The other seven local municipalities are Emthanjeni, Kareeberg, Thembelihle, Siyathemba, Renosterberg, Ubuntu and Umsobomvu.

The PKSDM is one of the five district municipalities in the province and is the second largest covering a surface area of 102 766 km<sup>2</sup>. The DM shares its borders with three other provinces, namely, the Free State province to the east, the Eastern Cape to the south-east and the Western Cape to the south-west.

The main settlements on the SLM are Douglas, Campbell and Griekwastad. The town of Douglas, which is the administrative seat of the SLM, is located near the confluence of the Gariiep and Vaal Rivers, approximately 80 km and 100 km west and south west of the towns of Ritchie and Kimberly respectively. Douglas is linked to Kimberly via the R357. The towns of Campbell and Griekwastadt are located approximately 100 and 150 km west of Kimberly respectively and are linked to the town by the R64.

### **2.3 PROVINCIAL CONTEXT**

The proposed solar energy facility is located in the Northern Cape Province, which is the largest province in South Africa and covers an area of 361,830 km<sup>2</sup> and constitutes approximately 30% of South Africa. The province is divided into five district municipalities (DM), namely, Frances Baard, Pixley ka Seme, Namakwa, Siyanda, and John Taolo Gaetsewe DM, twenty-six Category B municipalities and five district management areas. The site itself is located in the Siyancuma Local Municipality (SLM), one of the eight B-Municipalities that constitute the Pixley ka Seme District Municipality (PKSDM) (NC7).

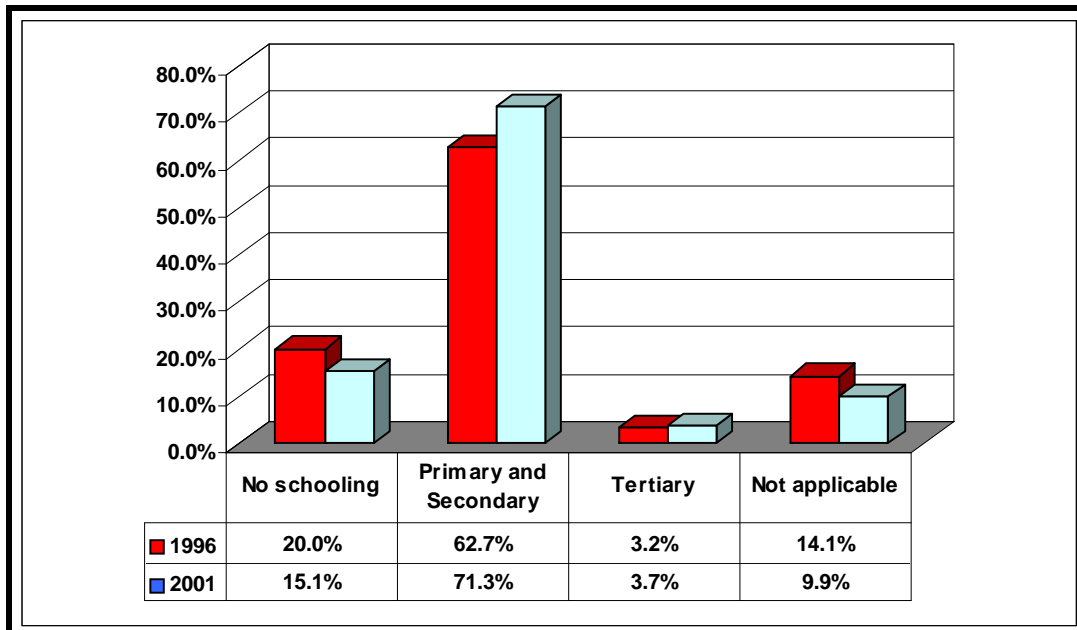
## **Population**

Despite having the largest surface area, the Northern Cape has the smallest population of 822 727 (Census 2001) or 1.8% of the population of South Africa. The population has declined by 2.1% from 1996 (840 321) to 2001 (822 727), resulting in a decrease in the population density, of an already sparsely populated province, from 2.32 to 2.27 persons per km<sup>2</sup>. Of the five districts, Frances Baard has the largest population of 303 239. The other districts and their respective populations are Siyanda (209 889), Karoo (164 607), Kgalagadi (36 881) and Namakwa (108 111). The population can be classified as a young population with 57.7% of the population being younger than 30 years old. The female proportion makes up approximately 51.2% of the total with males making up the remaining 48.8%. The 2001 Census data indicates a significant shift in the 20 – 24 cohort occurs, which can possibly be attributed to, amongst others, people in this age group moving to other provinces in search of better career and job opportunities and tertiary education. Research indicates that approximately 36% of the migrants from the Northern Cape moved to the Western Cape, while 19.4% moved to the North West (19.4%), 18.5% to Gauteng and 12.8% to the Free State (12.8%). In addition, there has also been an increase in migration from the rural areas to the larger towns in the province over the last five years. This movement is in response to the improved access to opportunities and services within the larger urban centers. This trend is reflected in the increase in the proportion of people living in urban areas from 75.2% in 1996 to 82.7% in 2001

## **Education**

In terms of education levels 15.1% of the population had no education at all, while 71.3% have primary or secondary education. Those with a higher educational qualification accounted for 3.7% of the population (Figure 2.1). These figures indicate an increase in all categories since 1996, except for the no schooling category, which decreased by 4.9% indicating a higher percentage of people attending school.

The information contained in Figure 2.1, indicates that, in general, there has been an improvement in the educational qualifications of the labour force in the Northern Cape. There has also been an increase in the proportion of the labour force that has a secondary and tertiary education. This would appear to be the result of an increase in access to education since 1994, in particular, amongst new entrants to the labour force.



**Figure 2.1: Percentage of people by level of education for 1996 and 2001**  
*(Source: Northern Cape Province PGDS)*

### **Economic development**

The Human Development Index<sup>2</sup> (HDI) for the province, which covers four indexed factors – life expectancy, adult literacy, GDP per capita (adjusted for real income) and education attainment, for the Northern Cape as a whole is 0.58, which is substantially below the South African figure of 0.72.

For the Northern Cape, the areas of lowest Human Development Index include the South Eastern region (Noupoort and Richmond) and the hinterland of Kimberley (Griekwastad, Campbell and Douglas) – for these areas the HDI varies between 0.47 to 0.51. Over the past 8 years there has been little to no variance in the HDI figures, indicating no increase or decrease in the overall standard of living. In contrast, the Kimberley and Springbok areas have the highest HDI of 0.63 to 0.62 respectively, primarily due to the broader economic opportunities and access to services such as infrastructure, schools, and health facilities. Similarly, there has been no significant change over the past 8 years.

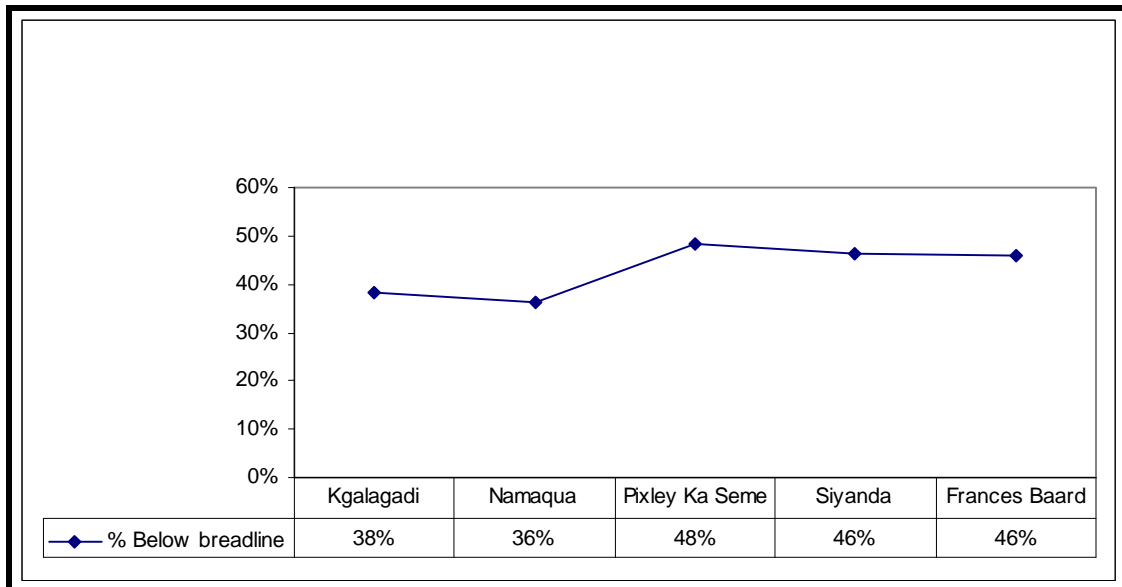
The above trend is unlikely to change in the foreseeable future, mainly due to the marginal economic base of the poorer areas, and the consolidation of the economic base in the relatively better off areas.

In terms of per capita income, the Northern Cape Province has the third highest per capita income of all nine Provinces, however, income distribution is extremely skewed, with a high percentage of the population living in extreme poverty. The measure used in the PGDS document to measure poverty is the percentage of people living below the poverty line or breadline is used<sup>3</sup>. The poverty line indicates a lack

<sup>2</sup> The closer the HDI to 1.0, the higher the level of “living condition”. For example, Sweden has an index of 0.91 defined as high, South Africa at 0.72 is defined as middle and Lesotho at 0.47 is defined as low.

<sup>3</sup> In terms of the poverty line, a person is considered poor if his or her consumption or income level falls below some minimum level necessary to meet basic needs. The minimum level is usually called the poverty line. In South Africa the poverty income level is set at R800/month.

of economic resources to meet basic food needs. Figure 2.2 indicates the percentage of household income below the poverty breadline of R800 in the Northern Cape Province, the highest being Pixley Ka Seme at 48% and the lowest being Namakwa at 36%.



**Figure 2.2: Percentage of household income below the poverty breadline by district** (Source: Northern Cape PGDS)

### Economic sectors

In terms of economic importance, the Northern Cape's share of the country's Gross Domestic Product (GDP) in 2002 was 2%, the lowest contribution of the nine provinces. However, although the Northern Cape Province has the smallest economy of the nine provinces, Gross Domestic Product of the Region (GDPR) per capita is higher than the national average. In terms of economic activities, the economy of Northern Cape is heavily dependent on the primary sectors of the economy, which in 2002 made up 31.0% of GDPR. The largest sector is mining which has declined in contribution to the GDPR from 25.8% in 1996 to 23.7% in 2002. Agriculture, on the other hand, increased in its contribution from 6.2% to 7.3%.

A worrying characteristic of the economy is the limited amount of processing of the primary commodity output in mining and agriculture that takes place in the Northern Cape. This is reflected in the fact that manufacturing contributes only 4.2% towards GDPR. All the industries in the secondary sector have decreased in their contribution to the GDPR, with electricity and water sector showing the greatest decrease of 0.7% and the construction industry making the lowest contribution of 1.9% to the GDPR of the Northern Cape. At the same time the contribution to regional GDPR by industries in the tertiary sector increased, with the exception of the wholesale and retail industry, which decreased by 1.1%. Figure 2.3 illustrates the percentage contribution of the various economic sectors to the GDPR of the Northern Cape

### Employment

Of the economically active population in the Northern Cape, 55.5% were employed while 26.1% could not find employment. This unemployment figure is lower than the national figure of 29.5%. Significant for this province, however, is that a third of the

total population is younger than 15 years old and approximately 45% of the potential labour force is younger than 30 years. At the same time, unemployment is the highest among the youth with unemployment rates of 54% and 47% in the 15 - 19 and 20 – 24 year-old age groups. There has been an increase in the economically active population from 35.9% in 1996 to 38.1% in 2001. The unemployment rate for the same period has increased from 28.3% to 33.4%. In terms of employment there has been a decrease in the number of people that are formally employed from 196 219 in 1996 to 193 980 in 2001. The largest decrease was in the private household sector, showing a loss of 4 859 jobs.

The most important sectors in terms of employment in 2002 were agriculture, hunting, forestry and fishing (28.4%), community, social and personal services (19.8%), wholesale and retail trade (12.7%) and private households (11.4%) (Table 2.3).

Sectors	1996	1996 % of persons employed per sector	2001	2001 % of persons employed per sector
<b>Primary</b>				
Agriculture, hunting; forestry and fishing	48646	24.8	55016	28.4
Mining and quarrying	18556	9.5	15493	8.0
<b>Secondary</b>				
Manufacturing	8812	4.5	10598	5.5
Electricity; gas and water supply	2397	1.2	1385	0.7
Construction	10402	5.3	8971	4.6
<b>Tertiary</b>				
Wholesale and retail trade	23099	11.8	24671	12.7
Transport; storage and communication	9963	5.1	6366	3.3
Financial, insurance, real estate and business services	7733	3.9	10989	5.7
Community, social and personal services	39724	20.2	38463	19.8
Private Households	26887	13.7	22028	11.4
<b>Total</b>	<b>196219</b>		<b>193980</b>	

**Table 2.3: Formal employment by sector (Source: Northern Cape PGDS)**

## 2.4 SOCIO-ECONOMIC OVERVIEW OF THE PROPOSED PROJECT AREA

As indicated in Section 1.6.2 Limitations, it is no longer possible to access Census 2001 data at Ward level via the Municipal Demarcation Board. As a result it was not possible to obtain ward level data for the Siyancuma Local Municipality. The social

baseline for this part of the study area is therefore described at Local Municipal level only.

As indicated above, the proposed Ritchie PVSEF is located in the PKSDM. However, the site is located on the border of the Sol Plaatjie Local Municipality which falls within the Frances Baard District Municipality. Due to the relative location of the site to the SPLM and the town of Kimberly (40km) an overview of the SPLM is provided.

### **3.2.1 Pixley ka Seme District Municipality<sup>4</sup>**

The Pixley ka Seme District Municipality (PKSDM) (NCDC7) is located in the south-east of the Northern Cape Province and shares its borders with three other provinces, namely, the Free State province to the east, the Eastern Cape to the south-east and the Western Cape to the south-west. Two major South African rivers, the Gariep and Vaal Rivers, run through the region and provide a key source of water for irrigation farming along these major rivers. Irrigation farming forms a large part of the agricultural activities in the region and the products cultivated maize, grapes and lucerne. The district is also home to two of the largest dams in South Africa, the Vanderkloof and Gariep Dams.

The Industries in the area are mostly confined to light industries. The Region, which is located in the Centre of South Africa, is blessed with a good road and railway network. In this regard four of the major National Routes pass through the PKSDM. The N1 and N12 routes link the two main economic centres, i.e., the Rand and the Western Cape and both these routes carry thousands of tons of valuable goods and material every day to all parts of the country. The N9 and N10 routes link Namibia and Gauteng with the coastline of Port Elizabeth, which is also the nearest export harbour for the Northern Cape Province.

The railway network around De Aar and Noupoot is one of the largest in South Africa. An average of 1 000 000 tons are conveyed through this station every month and capacity exists to increase this tonnage. On average 9 freight trains between Gauteng and the Western Cape pass through the station at De Aar every day, 4 to Port Elizabeth, 2 to Namibia and 10 from De Aar to Kimberley. The station at De Aar has direct or indirect links to virtually every corner of South Africa. One of Eskom's largest sub-stations – Hydra – is located near De Aar, supplying high voltage power especially to the Western Cape and the rural areas.

#### **Population**

The total population of the PKSDM is ~ 165 000 (Census 2001). Of the total population Coloureds make up ~ 62% of the total, followed by Black Africans (~27%) and Whites (~10%). For the SLM the figures are ~ 64 % Coloured, 26 % Black African and 8 % Whites. The Siyancuma LM makes up ~ 22 % (36 000) of the total making it the most populated LM in the DM. The demographic makeup of the SLM is similar to that of the region. The population density for the region is 2.1 people per square kilometre. In terms of future growth projections, a negative growth rate is forecast for the rural population and by 2015 the towns are also expected to show a negative growth rate Of 1.29% (PKSDM IDP). Table 3.2 provides a breakdown of the total population for each of the LM within the PKSDM.

---

<sup>4</sup> A copy of the Siyancuma LM IDP could not be sourced at the time of preparing the Social Assessment Report.

Municipality	Population	Households	Average household size	% Females
Emthanjeni	35 549 ♦	7 761	4.58	52%
Kareeberg	9 486	2 258	4.20	53%
NCDMA07	3 175	887	3.58	45%
Renosterberg	9 069	2 278	3.98	51%
Siyancuma	35 809 ♦	7 383	4.85	51%
Siyathemba	17 513	4 111	4.26	51%
Thembelihle	13 986	2 988	4.68	51%
Ubuntu	16 376	3 521	4.65	52%
Umsobomvu	23 640 ♦	5 083	4.65	52%
<b>Pixley</b>	<b>164 603</b>	<b>36 270</b>	<b>4.52</b>	<b>51%</b>

Source: PKSDM IDP 2008/2009

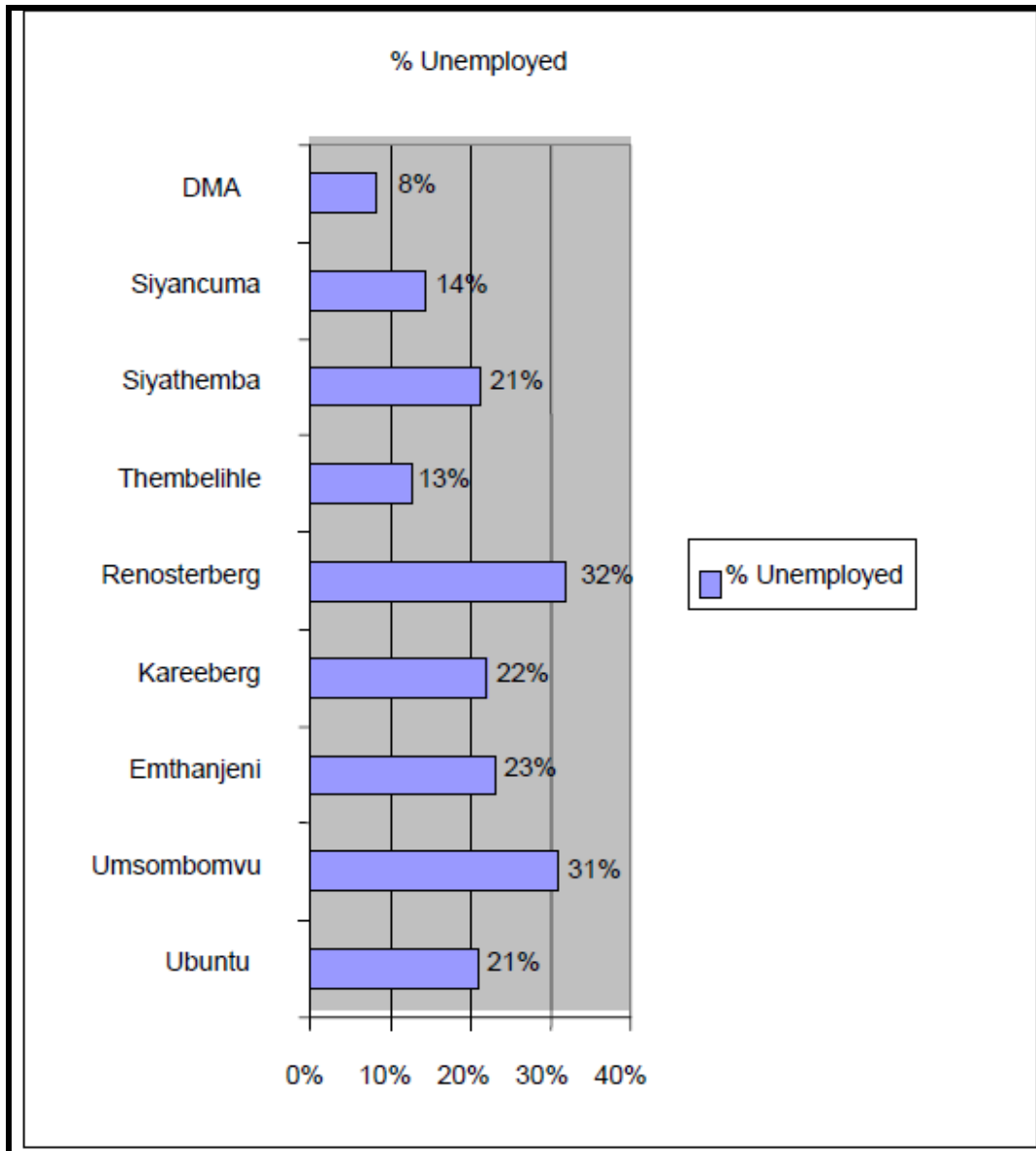
**Table 3.2: Population breakdown for the PKSDM**

The age structure of Pixley's population is similar to that of the Northern Cape, with ~ 16% of the population between 0-6 years old, while 8% are 60 years old or older. A further 31% are in the school going age group of 7 to 19 years. The economically active age group of 20 to 59 years old accounts for almost half the population (46%). The implications of this population structure are a higher demand on the provision of social and physical facilities, like schools, primary health care centres, etc. in the district (PKSDM IDP 2008/2009).

Notwithstanding the low population growth, the prevalence rate of HIV is a major factor in shaping future population estimates. The HIV/AIDS prevalence rate of PKSDM in 2001 was only marginally lower than the Northern Cape average (14.4% compared to 15.85% respectively), and well below the South African prevalence rate of 24.5%. Although not high by comparison to South Africa the PKSDM IDP notes that HIV/AIDS will impact on the growth and welfare of the Pixley ka Seme population.

### Employment

According to the Census 2001 data the unemployment rate in the PKSDM was 21%. The rate for the SLM was 14%. Figure 3.3 provides information on the unemployment rates in each of the 8 LMs in the PKSDM. In terms of employment the agricultural sector was the most important economic sector in the PKSDM accounting for ~ 39 % of the total working population. The commercial services sector accounted for ~ 23 % of the employment opportunities. These two sectors combined therefore accounted for ~ 62 % of all the employment opportunities in the area (PKSDM IDP 2008/2009).



Source: PKSDM IDP 2008/2009

**Figure 3.3: Unemployment rates in the 8 LMAs that make up the PKSDM**

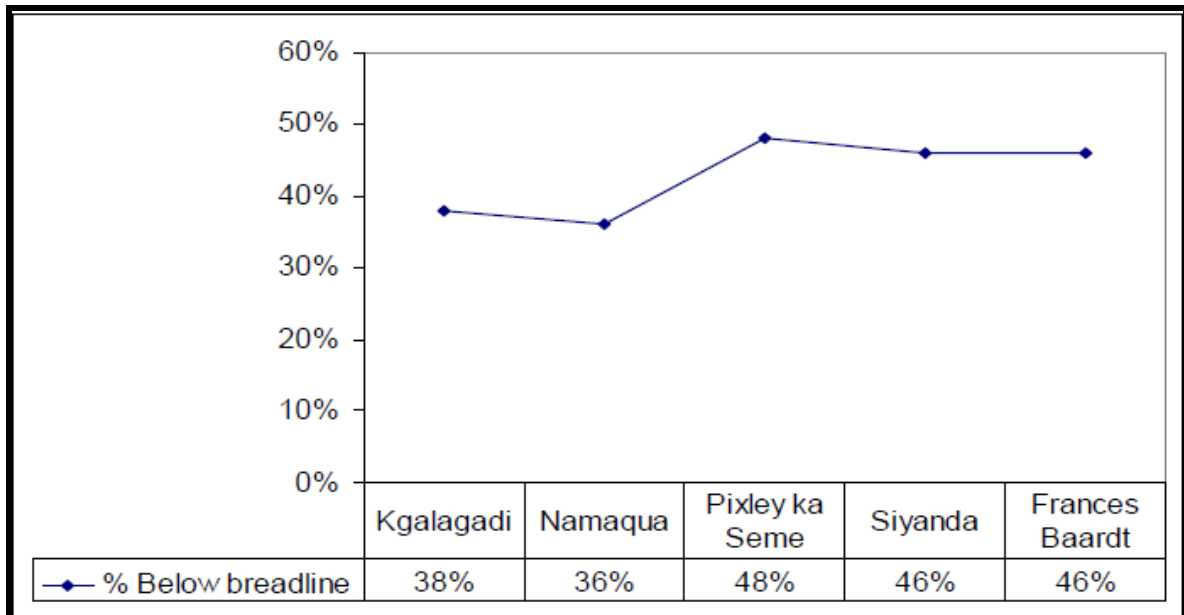
### Household income

Although the PKSDM only had an official unemployment rate of ~ 21%, household income levels in the region are low. In this regard ~ 64% of households had an income of R1 000 or less per month compared to the Northern Cape average of 54% of households below this level. The figure for the SLM is ~ 69% (Table 3.3). The PKSDM also has the highest percentage of households (48 %) in the Northern Cape Province that earn less than R 800 per month, which is regarded as the poverty breadline in South Africa (Figure 3.4) (PKSDM IDP 2008/2009).

Municipality	R500 and below	R501-1000	R1001-1500	Above R1500
Emthanjeni	37%	17%	13%	34%
Kareeberg	45%	22%	11%	22%
NCDMA07	39%	27%	12%	22%
Renosterberg	49%	20%	10%	21%
Siyancuma	50%	19%	11%	20%
Siyathemba	40%	23%	13%	25%
Thembelihle	41%	22%	12%	25%
Ubuntu	44%	22%	12%	22%
Umsobomvu	53%	18%	11%	18%
<b>PIXLEY</b>	<b>44%</b>	<b>20%</b>	<b>12%</b>	<b>24%</b>
<b>Northern Cape</b>	<b>36%</b>	<b>18%</b>	<b>13%</b>	<b>34%</b>

Source: PKSDM IDP 2008/2009

**Table 3.3: Household income levels in the 8 LMs that make up the PKSDM**



Source: PKSDM IDP 2008/2009

**Figure 3.3: Percentage of households with an income below the poverty breadline by district within the Northern Cape Province**

### Education

Based on Census ~ 25 % of the PKSDM population had no education, while 35% only had primary level of qualifications. Of the total population only 5.0 % had gained a matric qualification and 2.6% had a degree. The figures are essential the same for the SLM, namely 26% and 35% respectively. The education levels in the region are low and can be attributed to the rural nature of the area together with the substantial number of previously disadvantaged population groups who did not have equal access to education in the past era.

According to the Municipal Profiles of 2002, the primary school population represented 46.3 % of the total population of the district. There are 49 primary schools and 18 secondary schools and combined schools in the district. While the actual number of schools is generally satisfactory there is an acute shortage of schools in the remote areas of the district. As a result children often have to walk long distances to reach schools (PKSDM IDP 2008/2009).

### 3.2.2 Sol Plaatjie Local Municipality<sup>5</sup>

Kimberley, which is located in the Sol Plaatjie Local Municipality (SPLM), is the seat of the Provincial Legislature for the Northern Cape and the Provincial Administration. It services the mining and agricultural sectors of the region. The city also projects itself as a significant tourist destination, the 'City that Sparkles', boasting a diversity of museums and visitor attractions. It is also a gateway to other Northern Cape destinations including the Mokala National Park, nature reserves and numerous game farms or hunting lodges, as well as historic sites of the region.

#### Population

The SLM covers an area of 1 873 km<sup>2</sup> and has a total population of 245 606 (SPLM IDP Review, 2010-2011), which accounts for approximately 30% of the total population of the Northern Cape Province. Of this total 99.2% of the population is urbanised, with Kimberley (167 000) and Ritchie (9 960) being the two largest settlements within the LM. Approximately 57% of the population falls within the age group 20-64.

Over the last ten years, the population in SLM has grown slowly at an average pace of 0.92% per annum. According to the IDP 54% of the population in 2001 was African, 32% Coloured, 13% White and 1% Indian (Table 3.4). In terms of age, 56.7% of the total population in the SLM were between the ages of 20 and 65, in comparison with 53.9% for the Northern Cape.

Persons	2001	1996	Change over 5 years		Annual ave % change	% Composition 2001
			Number	Percent		
African	109,714	105,838	3,876	4%	0.7%	54%
Coloured	63,918	63,655	263	0%	0.1%	32%
Indian	1,612	1,809	-197	-11%	-2.3%	1%
White	26,220	29,587	-3,367	-11%	-2.4%	13%
Total Population	201,464	204,263	-2,799	-1%	-0.3%	100%

**Table 3.4: Population SLM (SLM, IDP, 2007-2011)**

<sup>5</sup> As indicated under Section 1.5.2 the demographic data for the area is dated (2001 Census) and Ward level data is no longer accessible via the web. During the EIA phase, the SIA team will attempt to supplement Census 2001 data, which may be available from officials and key community representatives.

## **Employment**

In 2006, there were an approximately 60 000 people employed in SLM, which is approximately 25.9% of all people employed in the Northern Cape. Approximately 32 000 people were unemployed. The unemployment rate in 2008 was estimated to be in the region of 40% (Global Insight, 2008).

## **Economy**

The SPLM accounted for approximately 30% of total provincial Gross Domestic Product (GDP) in 2009 (Global Insight: 2010). The largest economic role-players in the SPLM include the tertiary sector i.e. community services, finance, transport and trade. The mining sector also contributes significantly towards the economy, – although its contribution has steadily declined over the last 20 years or so.

It is estimated that 74,147 people from SPLM were living in poverty in 2006. Of this amount, 77.5% were from the black communities. However, these numbers have decreased at an average of 1.7% per annum since 2001. In 2006, the annual disposable income in the SLM grew at an average of 5.65% per annum from 2001. The population group that experienced the highest growth in its annual disposable income was the black population, which also accounted for 39.9% of total disposable income in 2006. Despite this the poverty gap in Sol Plaatje has increased in recent years meaning that persons or households lack the resources necessary to be able to consume a certain minimum basket of goods.

## **2.6 SURROUNDING LAND USES**

The proposed site is located on Portion 10 of Farm Klipfontein and Farm Klipdrift 109, which is a private farm that is bounded to the east by the N12 (which links Kimberly, to the north, and Cape Town, to the south). The confluence of the Modder and Riet Rivers is located approximately 1 km to the north-east of the site. The site is essentially level, with a small hill located towards the south-west (Photograph 2.1). The small settlements of Ritchie and Modder River are located on the northern banks of the Riet and Modder Rivers respectively, approximately 1 km from the northern boundary of the site.

There are two farmsteads and associated labourers cottages located on the property (Photograph 2.2). The farm on which the proposed PVSEF is located is jointly owned by Mr Allan Shergold and his sister, Debby. Mr Shergold lives on the farm, while his sister lives in Kimberly. Mr Shergold's father brought the farm in 1972. The main farming activities on the farm are linked to 8 x 33 ha centre pivot irrigation areas which are located in the south western section of the farm. The proposed PVSEF site is located in the northern section of the site and occupies an area of ~ 300 ha of the total 1970 ha farm. The crops grown under irrigation include maize, cotton, lucerne and ground beans. Kikuyu grass is also cultivated under irrigation. Ms Shergold also runs a nursery on the farm, which is located in the southern section of the farm, adjacent to the N12. Mr Shergold employs seven permanent farm workers, 3 of which live on the farm with their families, while the other 4 reside in Ritchie.



**Photograph 2.1: View from the small hill looking north over the site towards Ritchie**



**Photograph 2.2: View of farm workers houses on the proposed PVSEF site**

The livestock farmed on the farm include sheep and cattle. There are also springbok on the farm. The majority of the livestock and the springbok are kept in the area where the proposed PVSEF will be established. However, Mr Shergold

indicated that the irrigation component of the farm represented the main source of income and the loss of land associated with the proposed PVSEF would not have a significant impact on his farming operations.

The area in the vicinity of the proposed PVSEF is dominated by agriculture and agricultural related activities. These include the Department of Agriculture Riet River Agricultural Research Centre, which is located to the east of site on the eastern side of the N12. The area of the west, south and north of the site is all farmland which is owned by the Naude's (west and north) and Mr Arnold Neetling (south). There is also a chicken farming operation located along the north eastern boundary of the site, between the site and the N12. The operation is owned by Mr Danie Delpert and consists of 12 broiler houses. The Ritchie substation is located in the vicinity of the broiler houses, in the area between the between the site and the N12 (photograph 2.3). A power line associated with the substation traverses the northern section of the site in an east west direction (Photograph 2.4). There are also two commercial operations located approximately 500m to the north of the site, at the junction between the N12 and the R705. These operations are the B&H Boerdiens Fuel Distributors and the NC Farming Supplies. The Winning Post Winery and vineyards are located to the east of the N12, between the R705 and the Riet River (Photograph 2.5). The N12 also provides access to a number of important Boer War sites that are located in the area, including Magersfontein and Modder River battle sites. There is also a memorial to the Queens Own Light Infantry located adjacent to the R705, immediately to the north of the site. The R705 also provides an alternative access to the Mokala National Park which is located approximately 50 km west of the site, near Douglas



**Photograph 2.3: Ritchie substation with chicken broilers in the background**



**Photograph 2.4: View of power lines running across the northern section of the site**



**Photograph 2.5: Winning Post Winery**

The owner of the farm on which the proposed PVSEF is located also indicated that the Department of Agriculture was considering purchasing ~ 1000 ha of land from the farmers in the area and making this land available to emerging farmers. The land that has been identified is located to the south west of the site and includes a portion of site.



**Photograph 2.6: Township area in Ritchie**



**Photograph 2.7: Small holding area in Ritchie**

The closest towns to the site are Ritchie and Modder River (~ 2 km north), Kimberly (~40 km north) and Douglas (~ 60 west). The major access roads in the area are the N12, which runs in a north south, and the R705, which runs in an east west direction to the south of the Riet River. The town of Ritchie consists of two distinct sections, a typical “township” area which was established during the apartheid era, and an area that consists of small holdings located along and inland of the Riet River (Photograph 2.6 and 2.7). The township component of the town was established to provide accommodation for workers working in the agricultural sector. Modder River consists of a few houses, a small shop and a farmer’s co-op (Photograph 2.8). An 18 hole golf estate, the Magersfontein Memorial Golf Estate, is located on the northern banks of the Modder River approximately 3 km east of Modder River. A number of the residents commute to Kimberly on a daily basis.



**Photograph 2.7: Farmer’s co-op in Modder River**

---

## **SECTION 3: POLICY AND PLANNING CONTEXT**

---

### **3.1 INTRODUCTION**

Section 3 provides an overview of the policy and planning environment affecting the proposed PVSEF. For the purposes of the meeting the objectives of the EIA the following policy and planning documents were reviewed, namely:

- The National Energy Act (2008)
- The White Paper on the Energy Policy of the Republic of South Africa (December 1998)
- The White Paper on Renewable Energy (November 2003)
- Integrated Resource Plan (IRP) for South Africa (2010-2030);
- Northern Cape Provincial Growth and Development Strategy (2004-2014);
- Pixley ka Seme District Municipality Integrated Development Plan 2009-2012;
- Siyancuma Local Municipality Integrated Development Plan 2010;

The section also provides a summary some of the key social issues associated with solar facilities based on international experience.

### **3.2 NATIONAL LEVEL ENERGY POLICY**

#### **3.2.1 NATIONAL ENERGY ACT (ACT No 34 OF 2008)**

The National Energy Act was promulgated in 2008 (Act No 34 of 2008). One of the objectives of the Act was to promote diversity of supply of energy and its sources. In this regard, the preamble makes direct reference to renewable resources, including solar:

“To ensure that diverse energy resources are available, in sustainable quantities, and at affordable prices, to the South African economy, in support of economic growth and poverty alleviation, taking into account environmental management requirements (...); to provide for (...) increased generation and consumption of renewable energies...” (Preamble).

#### **3.2.2 White Paper on the Energy Policy of the Republic of South Africa**

Investment in renewable energy initiatives, such as the proposed PVSEF, is supported by the White Paper on Energy Policy for South Africa (December 1998). In this regard the document notes:

“Government policy is based on an understanding that renewables are energy sources in their own right, are not limited to small-scale and remote applications, and have significant medium and long-term commercial potential”.

“Renewable resources generally operate from an unlimited resource base and, as such, can increasingly contribute towards a long-term sustainable energy future”.

The support for renewable energy policy is guided by a rationale that South Africa has a very attractive range of renewable resources, particularly **solar** and wind and that renewable applications are in fact the least cost energy service in many cases; more so when social and environmental costs are taken into account.

Government policy on renewable energy is thus concerned with meeting the following challenges:

- Ensuring that economically feasible technologies and applications are implemented;
- Ensuring that an equitable level of national resources is invested in renewable technologies, given their potential and compared to investments in other energy supply options; and,
- Addressing constraints on the development of the renewable industry.

The White Paper also acknowledges that South Africa has neglected the development and implementation of renewable energy applications, despite the fact that the country’s renewable energy resource base is extensive and many appropriate applications exist.

The White Paper also notes that renewable energy applications have specific characteristics that need to be considered. Advantages include:

- Minimal environmental impacts in operation in comparison with traditional supply technologies;
- Generally lower running costs, and high labour intensities.

Disadvantages include:

- Higher capital costs in some cases
- Lower energy densities
- Lower levels of availability, depending on specific conditions, especially with sun and wind based systems

### **3.2.3 White Paper on Renewable Energy**

This White Paper on Renewable Energy (November, 2003) (further referred to as the White Paper) supplements the *White Paper on Energy Policy*, which recognises that the medium and long-term potential of renewable energy is significant. This Paper sets out Government’s vision, policy principles, strategic goals and objectives for promoting and implementing renewable energy in South Africa.

The White Paper notes, that while South Africa is well-endowed with renewable energy resources that have the potential to become sustainable alternatives to fossil fuels, these have thus far remained largely untapped. As signatory to the Kyoto Protocol, Government is determined to make good the country’s commitment to reducing greenhouse gas emissions. To this purpose, Government has committed itself to the development of a framework in which a national renewable energy framework can be established and operate.

South Africa is also a signatory of the Copenhagen Accord, a document that delegates at the 15th session of the Conference of Parties(COP 15) to the United Nations Framework Convention on Climate Change agreed to "take note of" at the final plenary on 18 December 2009. The accord endorses the continuation of the Kyoto Protocol and confirms that climate change is one of the greatest challenges facing the world. In terms of the accord South Africa committed itself to a reduction target of 34% compared to business as usual.

Apart from the reduction of greenhouse gas emissions, the promotion of renewable energy sources is aimed at ensuring energy security through the diversification of supply (in this regard, also refer to the objectives of the National Energy Act).

Government's long-term goal is the establishment of a renewable energy industry producing modern energy carriers that will offer in future years a sustainable, fully non-subsidised alternative to fossil fuels. The medium-term (10-year) target set in the White Paper is:

*10 000 GWh (0.8 Mtoe) renewable energy contribution to final energy consumption by 2013, to be produced mainly from biomass, wind, solar and small-scale hydro. The renewable energy is to be utilised for power generation and non-electric technologies such as solar water heating and bio-fuels. This is approximately 4% (1667 MW) of the projected electricity demand for 2013 (41539 MW) (Executive Summary, ix).*

#### **3.2.4 Integrated Resource Plan for Electricity (2010-2030)**

The current iteration of the Integrated Resource Plan (IRP) for South Africa, initiated by the Department of Energy (DoE) after a first round of public participation in June 2010, led to the Revised Balanced Scenario (RBS) that was published in October 2010. The document outlines the proposed generation new build fleet for South Africa for the period 2010 to 2030. This scenario was derived based on the cost-optimal solution for new build options (considering the direct costs of new build power plants), which was then "balanced" in accordance with qualitative measures such as local job creation. In addition to all existing and committed power plants, the RBS included a nuclear fleet of 9,6 GW; 6,3 GW of coal; 11,4 GW of renewables; and 11,0 GW of other generation sources.

A second round of public participation was conducted in November/December 2010, which led to several changes to the IRP model assumptions. The main changes were the disaggregation of renewable energy technologies to explicitly display solar photovoltaic (PV), concentrated solar power (CSP) and wind options; the inclusion of learning rates, which mainly affected renewables; and the adjustment of investment costs for nuclear units, which until then represented the costs of a traditional technology reactor and were too low for a newer technology reactor (a possible increase of 40%).

Additional cost-optimal scenarios were generated based on the changes. The outcomes of these scenarios, in conjunction with the following policy considerations, led to the Policy-Adjusted IRP:

- The installation of renewables (solar PV, CSP and wind) were brought forward in order to accelerate a local industry;

- To account for the uncertainties associated with the costs of renewables and fuels, a nuclear fleet of 9,6 GW was included in the IRP;
- The emission constraint of the RBS (275 million tons of carbon dioxide per year after 2024) was maintained;
- Energy efficiency demand-side management (EEDSM) measures were maintained at the level of the RBS.

The Policy-Adjusted IRP includes the same amount of coal and nuclear new builds as the RBS, while reflecting recent developments with respect to prices for renewables. In addition to all existing and committed power plants (including 10 GW committed coal), the plan includes 9,6 GW of nuclear; 6,3 GW of coal; 17,8 GW of renewables; and 8.9 GW of other generation sources. The Policy-Adjusted IRP has therefore resulted in an increase in the contribution from renewables from 11,4 GW to 17,8 GW.

Table 3.1 indicates the new capacities of the Policy commitment. The dates shown in Table 3,1 indicate the latest that the capacity is required in order to avoid security of supply concerns. The document notes that projects could be concluded earlier than indicated.

	New build options							
	Coal (PF, FBC, imports, own build)	Nuclear	Import hydro	Gas – CCGT	Peak – OCGT	Wind	CSP	Solar PV
	MW	MW	MW	MW	MW	MW	MW	MW
2010	0	0	0	0	0	0	0	0
2011	0	0	0	0	0	0	0	0
2012	0	0	0	0	0	0	0	300
2013	0	0	0	0	0	0	0	300
2014	500 <sup>1</sup>	0	0	0	0	400	0	300
2015	500 <sup>1</sup>	0	0	0	0	400	0	300
2016	0	0	0	0	0	400	100	300
2017	0	0	0	0	0	400	100	300
2018	0	0	0	0	0	400 <sup>4</sup>	100 <sup>4</sup>	300 <sup>4</sup>
2019	250	0	0	237 <sup>2</sup>	0	400 <sup>4</sup>	100 <sup>4</sup>	300 <sup>4</sup>
2020	250	0	0	237 <sup>2</sup>	0	400	100	300
2021	250	0	0	237 <sup>2</sup>	0	400	100	300
2022	250	0	1 143 <sup>2</sup>	0	805	400	100	300
2023	250	1 600	1 183 <sup>2</sup>	0	805	400	100	300
2024	250	1 600	283 <sup>2</sup>	0	0	800	100	300
2025	250	1 600	0	0	805	1 600	100	1 000
2026	1 000	1 600	0	0	0	400	0	500
2027	250	0	0	0	0	1 600	0	500
2028	1 000	1 600	0	474	690	0	0	500
2029	250	1 600	0	237	805	0	0	1 000
2030	1 000	0	0	948	0	0	0	1 000
<b>Total</b>	<b>6 250</b>	<b>9 600</b>	<b>2 609</b>	<b>2 370</b>	<b>3 910</b>	<b>8 400</b>	<b>1 000</b>	<b>8 400</b>

Firm commitment necessary now  
 Final commitment in IRP 2012

1. Built, owned & operated by IPPs 2. Commitment necessary due to required high-voltage infrastructure, which has long lead time 3. Commitment necessary due to required gas infrastructure, which has long lead time 4. Possibly required grid upgrade has long lead time and thus makes commitment to power capacity necessary

Source: Integrated Resource Plan (IRP) for South Africa

**Table 3.1: Commitments before next IRP**

The key recommendations contained in the Policy-Adjusted IRP Final Report (March 2011) that have a bearing on the renewable energy sector include:

### **General**

- The dark shaded projects in Table 3.1 need to be decided before the next IRP iteration, with the identified capacities thereafter assumed as “committed” projects;
- The light shaded options should be confirmed in the next IRP iteration;
- All non-shaded options could be replaced during the next, and subsequent, IRP iterations if IRP assumptions change and thus impact on the quantitative model results.

### **Solar energy**

- Solar PV programme 2012-2015: In order to facilitate the connection of the first solar PV units to the grid in 2012 a firm commitment to this capacity is necessary. Furthermore, to provide the security of investment to ramp up a sustainable local industry cluster, the first four years from 2012 to 2015 require firm commitment;
- Solar PV 2016 to 2019: As with wind, grid upgrades might become necessary for the second round of solar PV installations from 2016 to 2019, depending on their location. To trigger the associated tasks in a timely manner, a firm commitment to these capacities is necessary in the next round of the IRP at the latest. By then, the assumed cost decreases for solar PV will be confirmed;
- CSP 2016: The 100 MW of CSP power, planned for 2016, needs firm commitment because of the long lead time of these projects;
- CSP 2017 to 2019: Because of the long lead time for CSP plants, a commitment to the capacity planned for 2017 to 2019 is necessary in the next round of the IRP at the latest. By then, the cost and technical assumptions for CSP plants will also be grounded on more solid empirical data;

### **Conclusions**

The key conclusions that are relevant to the renewable energy sector include:

- An accelerated roll-out of renewable energy options should be allowed in order to derive the benefits of localisation in these technologies;
- A solar PV programme as envisaged in the Policy-Adjusted IRP should be pursued (including decentralised generation).

## **3.3 PROVINCIAL LEVEL POLICY AND PLANNING**

### **3.3.1 Northern Cape Province Provincial Growth and Development Strategy**

The Provincial Growth and Development Strategy (PGDS) notes that the most significant challenge that the government and its partners in growth and development are confronted with is the **reduction of poverty**. All other societal challenges that the province faces emanate predominantly from the effects of poverty. The PGDS notes that the only effective way to reduce poverty is through long-term sustainable economic growth and development. The sectors where economic growth and development can be promoted include:

- Agriculture and Agro-processing
- Fishing and Mariculture
- Mining and mineral processing
- Transport
- Manufacturing

- Tourism

However, the PGDS also notes that economic development in these sectors also requires:

- Creating opportunities for lifelong learning
- Improving the skills of the labour force to increase productivity
- Increasing accessibility to knowledge and information

The achievement of these primary development objectives depends on the achievement of a number of related objectives that, at a macro-level, describe necessary conditions for growth and development. These are:

- Developing requisite levels of human and social capital
- Improving the efficiency and effectiveness of governance and other development institutions
- Enhancing infrastructure for economic growth and social development

Of specific relevance to the SIA the NCPGDS make reference to the need to ensure the availability of inexpensive energy. The section notes that in order to promote economic growth in the Northern Cape the availability of electricity to key industrial users at critical localities at rates that enhance the competitiveness of their industries must be ensured. At the same time, the development of new sources of energy through the promotion of the adoption of energy applications that display a synergy with the province's natural resource endowments must be encouraged. In this regard the NCPGDS notes "the development of energy sources such as **solar energy**, the natural gas fields, bio-fuels, etc, could be some of the means by which new economic opportunity and activity is generated in the Northern Cape". The NCPGDS also highlights the importance of close co-operation between the public and private sectors in order for the economic development potential of the Northern Cape to be realised.

The NCPGDS also highlights the importance of enterprise development, and notes that the current levels of private sector development and investment in the Northern Cape are low. In addition, the province also lags in the key policy priority areas of SMME Development and Black Economic Empowerment. The proposed solar energy facility therefore has the potential to create opportunities to promote private sector investment and the development of SMMEs in the Northern Cape Province.

In this regard care will need to be taken to ensure that the proposed PVSEF and other renewable energy facilities do not negatively impact on the regions natural environment. In this regard the NCPGDS notes that the sustainable utilisation of the natural resource base on which agriculture depends is critical in the Northern Cape with its fragile eco-systems and vulnerability to climatic variation. The document also indicates that due to the provinces exceptional natural and cultural attributes, it has the potential to become the preferred adventure and ecotourism destination in South Africa. Care therefore needs to be taken to ensure that the development of large renewable energy projects, such as the proposed solar energy facility, do not affect the tourism potential of the province.

The NCPGDS also notes that the Northern Cape Provincial Government will promote the preservation of agricultural biodiversity and the sustainable use of soil and water through the application of legislation and related regulations where this is necessary.

In this regard the proposed PVSEF will consume relatively large volumes of water, which is a scarce resource in the area. The water required for the project may also impact on the provincial government's commitment to land reform through the allocation of water rights to emerging black farmers.

### **3.4 DISTRICT LEVEL PLANNING AND SPATIAL POLICY CONTEXT**

#### **3.4.1 Pixley ka Seme District Municipality Integrated Development Plan 2009-2012**

The Pixley ka Seme District Municipality Integrated Development Plan (IDP) (2009-2012) is based on the requirements and guidance of the Municipal Systems Act (Act No. 32 of 2000) which identifies 5 broad strategic priority areas for consideration during the IDP process. These broad strategic priority areas are as follows:

- Infrastructure and Services;
- Social and Economic Development;
- Institutional Transformation;
- Democracy and Governance; and,
- Financial Management/Viability.

More specifically, the 2009-2010 IDP forms the basis for the District to achieve the following:

- Support Government efforts to put the people at the centre of development, not merely as beneficiaries, but as drivers of transformation;
- Move faster and further in providing a better life for all;
- Strive to halve unemployment and poverty by the end of 2014;
- Create job opportunities and fight poverty through infrastructure development and service delivery, procurement and support for SMME's and Broad Based Black Economic Development;
- Speed up the delivery of free basic services;
- Work with National and Provincial Government to improve service delivery and access to basic services;
- Ensure that communities have access to clean water by the end of 2010;
- **Ensure that communities have access to electricity by the end of 2014;**
- Ensure that communities have access to decent sanitation by the end of 2010;
- Ensure that communities have access to decent housing by the end of 2010;
- Utilise distributed land for development and agricultural purposes;
- Provide the skills required for the District's economic development and growth;
- Provide infrastructure to facilitate economic growth and development that will increase capacity to provide basic services and contribute to a safe and healthy environment;
- Ensure community and public participation to allow citizens to identify the problems that their community face and partner in providing solutions;
- Build sustainable human settlements;
- Ensure that councillors are responsive, accountable and effective and that everybody is involved in local government understands and honours the duty to respect and serve the people.

The guidance of the strategic priorities forms the framework for the District analysis of the status quo across numerous sectors within the District. The District analysis, in

turn, informs the development objectives for the municipality. The IDP development objectives highlighted in the Pixley ka Seme IDP include:

- **Objective 1:** *To accelerate the Provision of Water, Sanitation, Roads & Storm Water & Electricity Services in partnership with key stakeholders to meet millennium targets and improve the living conditions for all;*
- **Objective 2:** *To accelerate the Provision of quality Municipal health Services to all Communities in line with National Department of Health guidelines to ensure effective, affordable and accessible Municipal Health Services to all;*
- **Objective 3:** *To provide a comprehensive Disaster Management, Fire and Emergency Services that will ensure that all communities are safe and can get timely and adequate assistance and responses in time of need;*
- **Objective 4:** *To increase compliance to traffic legislation and licensing services within the Pixley Ka Seme Local Municipality area;*
- **Objective 5:** *To increase capacity of Pixley Ka Seme Local Municipality to have comprehensive town planning in support of economic growth and development;*
- **Objective 6:** *To facilitate provision of adequate housing services to meet community needs and stimulate economic growth and development;*
- **Objective 7:** *To develop and implement a comprehensive municipal IDP that will meet all the basic service backlogs, infrastructural shortages, institutional arrangement challenges, capacity building, etc. to strengthen public participation through Izimbizo, IDP Forums and other Communication platforms;*
- **Objective 8:** *To increase the capacity of Pixley Ka Seme Local Municipality promote tourist attraction areas and increase the participation and beneficiation of the previously marginalized communities;*
- **Objective 9:** *To ensure that Pixley Ka Seme Local Municipality maintains its clean audit record and have good financial management;*
- **Objective 10:** *To facilitate, support provision of comprehensive services to the communities through accelerated service delivery and ensuring that communities can have access to services which are closer to them;*
- **Objective 11:** *To increase the capacity of the Pixley Ka Seme Local Municipality, to provide efficient and effective support services to its administration and political office bearers;*
- **Objective 12:** *To increase the capacity of Pixley ka Seme to have comprehensive Transport Planning in support of economic growth and development;*
- **Objective 13:** *To enhance Pixley ka seme Local Municipality capacity to provide bulk infrastructure, capacitate and support in providing basic services and project Management;*
- **Objective 14:** *To accelerate water provision within Pixley Ka Seme and to ensure that all residents have access to clean water; and*
- **Objective 15:** *To facilitate provision of adequate services to meet community needs and stimulate economic growth and development.*

According to the Pixley ka Seme strategy plan, a key development objective is to provide access to electricity to all households in the District by 2014. To achieve this, the District Municipality aims to i) Fast track the delivery of free basic electricity and ii) co-ordinate the maintenance and upgrading of the existing electricity infrastructure. While no specific mention is made of the promotion of alternative energy sources, the proposed project would potentially support a number of the development goals and objectives of the Pixley ka Seme DM.

### **3.5 MUNICIPAL LEVEL PLANNING AND SPATIAL POLICY CONTEXT**

#### **3.5.1 Sol Plaatjie Local Municipality Integrated Development Plan (2010)**

Section 6.3.2, Sustainable Development-The Sol Plaatjie Situation, is of relevance to the proposed Ramphele PSEF. The SLM was introduced to the concept of sustainable development during the Swedish (Sida) Urban Planning and Environmental support programme from 1997 to 1999. During this period a Local Agenda 21(LA21) process was established in Kimberley and a formal position of a LA21 Co-ordinator was created. As part of this initiative, the Sustainable Energy and Climate Change Unit (SECCU) was established in the Directorate: Community and Social Development Services in February 2007. With reference to the proposed PSEF project, the Unit's main objectives are:

- To stimulate sustainable energy approaches and practices within SPM as well as the integration of energy efficiency objectives into all its functions.
- To assist SPM to support the national and international commitment to reduce greenhouse gases (GHGs).
- To synergise energy related tasks and initiatives already underway within the City towards a common energy goal;
- To initiate steps towards declaring SPM a Solar City. The IDP notes that in 2004 the former premier, Mr Manne Dipico, declared the Northern Cape Province the SOLAR PROVINCE of South Africa due to its enormous amount of sunshine. Kimberley is the capital of the Northern Cape Province and it would be appropriate that it becomes directly involved in fulfilling this goal, and drive towards declaring itself a SOLAR CITY. The proposed Ramphele PSEF therefore supports the objective of developing solar energy in the local area and the Northern Cape.

In addition, the focus of the IDP is in concentrated its efforts in aligning its LED initiatives with that of the Provincial and District GDS, to support the SMME sector, supporting the Province in its tourism initiatives and ensuring an enabling environment for the private sector to expand and invest.

### **3.6 INTERNATIONAL EXPERIENCE WITH SOLAR ENERGY PLANTS**

The proposed Ramphele facility is a PVSEF as opposed to a Concentrating Solar Power (CSP) plant. In this regard the majority of the international experience is based on CSPs as opposed to PVSEFs. In this regard the key differences in terms of potential impacts relate to the use of water and the visual impacts associated with the large tower structures associated with CSP plants.

CSP plants (like most conventional power plants) require large volumes of cooling water, which make them less suited to arid, water scarce environments, such as the Karroo. PVSEFs on the other hand, such as the proposed Ramphele PVSEF, on the other hand, do not require cooling water and as such are more suited to areas where water is a scarce resource.

In terms of visual impacts, the parabolic troughs and the power tower, where the solar energy from the solar reflectors is concentrated, are likely to have a higher visual impact than the solar panels associated with PVSEFs.

---

## **SECTION 4: ASSESSMENT OF KEY SOCIAL ISSUES**

---

### **4.1 INTRODUCTION**

Section 4 identifies the key social issues identified during the SIA study. The identification of social issues was based on:

- The Social Scoping Report prepared for the Scoping Report (Tony Barbour, April, 2011);
- Review of project related information, including other specialist studies;
- Interviews with key interested and affected parties;
- Experience of the authors of the area and the local conditions;
- Experience with similar projects.

In identifying the key issues the following assumption is made:

- The area identified for the proposed PVSEF meets the technical criteria required for such facilities.

### **4.2 IDENTIFICATION OF KEY SOCIAL ISSUES**

The key social issues identified during the SIA can be divided into:

- The policy and planning related issues
- Local, site-specific issues

The local site-specific issues can in turn be divided into construction and operational related issues. These issues are discussed and assessed below. The potential impacts associated with the associated infrastructure (access road, pipeline and power line routes\_ are also assessed.

### **4.3 POLICY AND PLANNING ISSUES**

As indicated in Section 1.6, legislative and policy context plays an important role in identifying and assessing the potential social impacts associated with a proposed development. In this regard a key component of the SIA process is to assess the proposed development in terms of its fit with key planning and policy documents.

The review of the relevant planning and policy documents was undertaken as a part of the SIA. The key documents reviewed included:

- The National Energy Act (2008);
- The White Paper on the Energy Policy of the Republic of South Africa (December 1998);
- The White Paper on Renewable Energy (November 2003);

- Integrated Resource Plan (IRP) for South Africa (2010-2030);
- Northern Cape Provincial Growth and Development Strategy (2004-2014);
- Pixley ka Seme District Municipality Integrated Development Plan 2009-2012;
- Sol Plaatjie Local Municipality Integrated Development Plan 2010.

The findings of the review indicated that solar energy was strongly supported at a national and local level. At a national level the White Paper on Energy Policy (1998) notes:

- Renewable resources generally operate from an unlimited resource base and, as such, can increasingly contribute towards a long-term sustainable energy future;
- The support for renewable energy policy is guided by a rationale that South Africa has a very attractive range of renewable resources, particularly **solar** and wind and that renewable applications are in fact the least cost energy service in many cases; more so when social and environmental costs are taken into account.

At a provincial level the NCPGDP notes that availability of inexpensive energy is a key requirement in order to promote economic growth in the Northern Cape. The NCGDS goes on to indicate that "the development of energy sources such as **solar energy**, the natural gas fields, bio-fuels, etc, could be some of the means by which new economic opportunity and activity is generated in the Northern Cape".

The IRP 2010 also allocates 43% of energy generation in South Africa to renewables.

Based on this it is reasonable to assume that the establishment of PVSEFs is supported. However, the NCPGDS also states that the sustainable utilisation of the natural resource base on which agriculture depends is critical in the Northern Cape with its fragile ecosystems and vulnerability to climatic variation. The document also indicates that due to the Province's exceptional natural and cultural attributes, it has the potential to become the preferred adventure and ecotourism destination in South Africa. Care therefore needs to be taken to ensure that the development of large renewable energy projects, such as the proposed solar energy facility, do not impact on the tourism potential of the Province.

The findings of the review of the relevant policies and documents pertaining to the energy sector therefore indicate that solar energy and the establishment of solar energy plants are supported at a national, provincial, and local level. It is therefore the opinion of the authors that the establishment of a solar energy plant on the proposed site is supported by national, provincial and local policies and planning documents.

#### **4.4 SOCIAL IMPACTS ASSOCIATED WITH THE CONSTRUCTION PHASE**

The key social issues associated with the construction phase include:

##### **Potential positive impacts**

- Creation of employment and business opportunities and opportunity for skills development and on-site training

##### **Potential negative impacts**

- Impacts associated with the presence of construction workers on site;
- Influx of job seekers to the area;
- Loss of farm labour to the construction phase;
- Increased risk of stock theft, poaching and damage to farm infrastructure associated with presence of construction workers on the site;
- Increased risk of veld fires associated with construction-related activities;
- Impact of heavy vehicles, including damage to roads, safety, noise and dust;
- Potential loss of grazing land associated with construction-related activities.

Annexure C contains the management plan for addressing social impacts.

##### **4.4.1 Creation of employment and business opportunities**

Based on the information provided by Solar Capital the construction phase is expected to extend over a period ~12 months and create approximately 700 employment opportunities during peak construction. The minimum number of people on site during the construction phase would be ~ 33. The work associated with the construction phase will be undertaken by contractors and will include the establishment of the PVSEF and the associated components, including, access roads, substation, services and power line.

Based on information provided by the proponent it is anticipated that approximately 80% of the employment opportunities will be available to low-skilled workers (construction labourers, security staff etc.), 10% to semi-skilled (drivers, equipment operators etc.) and 10% to skilled personnel (engineers, land surveyors, project managers etc.). The majority of the employment opportunities, specifically the low and semi-skilled opportunities, are therefore likely to be available to members from the local Historically Disadvantaged (HD) community who reside in Ritchie, Douglas and Kimberly. The majority of the skilled employment opportunities are likely to be associated with the contractors appointed for the construction phase. However, it should also be noted that the majority of contractors tend to use their own staff and this may limit the potential for direct employment opportunities for locals during the construction phase. The low education and skills levels in the area will also hamper potential opportunities for local communities. However, members of the local community are likely to benefit from the low skilled employment opportunities associated with the project. In this regard the majority of the beneficiaries are likely to be historically disadvantaged (HD) members of the community.

Based on information provided by the proponent the capital expenditure is anticipated to be in the region of R 2.3 billion million for a 100 MW facility. In terms of business opportunities for local companies, expenditure during the construction

phase will create business opportunities for the regional and local economy. However, given the technical nature of the project and high import content associated with PVSEFs opportunities for the local economy and the towns of Ritchie, Kimberly and Douglas are likely to be limited. However, opportunities are likely to exist for local contractors and engineering companies in Kimberly. Implementing the enhancement measures listed below can enhance these opportunities.

The implementation of the proposed enhancement measures listed below would enable the establishment of the proposed PVSEF to support co-operation between the public and private sectors in order for the economic development potential of the Northern Cape to be realised. In this regard the NCPGDS highlights the importance of enterprise development, and notes that the current levels of private sector development and investment in the Northern Cape are low. The proposed PVSEF therefore has the potential to create opportunities to promote private sector investment and the development of SMMEs in the Northern Cape Province.

The sector of the local economy that is most likely to benefit from the proposed development is the local service industry. The potential opportunities for the local service sector would be linked to accommodation, catering, cleaning, transport and security, etc. associated with the construction workers on the site. The majority of construction workers are likely to be accommodated in the nearest local towns, specifically Ritchie and Kimberly. This will create opportunities for local hotels, B&Bs, guest farms and people who want to rent out their houses. Solar Capital has indicated that ~ 40 skilled personnel will be employed during the construction phase and that personnel will all need to be housed in the local area.

In addition, a proportion of the total wage bill earned by construction workers over the 12 month construction phase is also likely to be spent in the regional and local economy. Based on information from the client the total wage bill for the 12 month construction phase will be in the region of R 35 million. The injection of income into the area in the form of rental for accommodation and wages will create opportunities for local businesses in towns such as Ritchie and Kimberly. The benefits to the local economy will however be confined to the construction period.

In terms of training and skills development, Solar Capital have indicated that they have entered into discussions with a local South African University to establish a Solar Academy with the view of providing training and skills development in the field of solar energy. In addition, training and skills development will be provided by the contractors appointed to manage the construction phase. However, the majority of benefits are likely to accrue to personnel employed by the relevant contractors. In the absence of specific commitments from the developer to maximise local employment targets the potential for meaningful skills development and training for members from the local communities are likely to be limited.

The hospitality industry in the local towns is also likely to benefit from the provision of accommodation and meals for professionals (engineers, quantity surveyors, project managers, product representatives etc.) and other (non-construction) personnel involved on the project. Experience from other large construction projects indicates that the potential opportunities are not limited to on-site construction workers but also to consultants and product representatives associated with the project.

**Table 4.1: Impact assessment of employment and business creation opportunities during the construction phase**

<b>Nature:</b> Creation of employment and business opportunities during the construction phase		
	<b>Without Mitigation</b>	<b>With Enhancement</b>
<b>Extent</b>	Local – Regional (2) (Rated as 2 due to potential opportunities for local communities and businesses)	Local – Regional (4) (Rated as 3 due to potential opportunities for local communities and businesses)
<b>Duration</b>	Very Short Term (1)	Very Short Term (1)
<b>Magnitude</b>	Low (4)	High (6)
<b>Probability</b>	Highly probable (4)	Highly probable (4)
<b>Significance</b>	Low (28)	High (60)
<b>Status</b>	Positive	Positive
<b>Reversibility</b>	N/A	N/A
<b>Irreplaceable loss of resources?</b>	N/A	N/A
<b>Can impact be enhanced?</b>	Yes	
<b>Enhancement :</b> See below		
<b>Cumulative impacts:</b> Opportunity to up-grade and improve skills levels in the area. However, due to relatively small number of local employment opportunities this benefit is likely to be limited.		
<b>Residual impacts:</b> Improved pool of skills and experience in the local area. However, due to relatively small number of local employment opportunities this benefit is likely to be limited.		

#### **Assessment of No-Go option**

There is no impact as it maintains the current status quo. The potential employment and economic benefits associated with the proposed PVSEF would therefore be forgone. The potential opportunity costs in terms of the capital expenditure, employment, skills development, and opportunities for local business are therefore regarded as a negative.

#### **Recommended enhancement measures**

In order to enhance local employment and business opportunities associated with the construction phase the following measures should be implemented:

##### **Employment**

- Where reasonable and practical, Solar Capital will appoint local contractors and implement a 'locals first' policy, especially for semi and low-skilled job categories. However, due to the low skills levels in the area, the majority of skilled posts are likely to be filled by people from outside the area.
- Where feasible, efforts should be made to employ local contractors that are compliant with Black Economic Empowerment (BEE) criteria;
- Before the construction phase commences Solar Capital will meet with representatives from the Siyancuma Local Municipality to establish the existence of a skills database for the area. If such a database exists it should be made available to the contractors appointed for the construction phase.

- The local authorities, community representatives, and organisations on the interested and affected party database should be informed of the final decision regarding the project and the potential job opportunities for locals and the employment procedures that Solar Capital intends following for the construction phase of the project.
- Where feasible, training and skills development programmes for locals should be initiated prior to the initiation of the construction phase.
- The recruitment selection process should seek to promote gender equality and the employment of women wherever possible.

### **Business**

- Solar Capital will seek to develop a database of local companies, specifically BEE companies, which qualify as potential service providers (e.g. construction companies, catering companies, waste collection companies, security companies etc.) prior to the commencement of the tender process for construction contractors. These companies should be notified of the tender process and invited to bid for project-related work;
- Where possible, Solar Capital will assist local BEE companies to complete and submit the required tender forms and associated information.
- The Siyancuma Local Municipality, in conjunction with the local Chamber of Commerce and representatives from the local hospitality industry, should identify strategies aimed at maximising the potential benefits associated with the project.

Note that while preference to local employees and companies is recommended, it is recognised that a competitive tender process may not guarantee the employment of local labour for the construction phase.

#### **4.4.2 Presence of construction workers in the area**

In terms of affected farmsteads, there are a relatively small number of farmsteads that will be affected. However, there are a number of potentially vulnerable farming activities, such as livestock farming. The potential threat to farming activities is discussed below. In addition, the presence of construction workers also poses a potential risk to family structures and social networks in the area. The most vulnerable communities include the communities in Ritchie and Modder River.

While the presence of construction workers does not in itself constitute a social impact, the manner in which construction workers conduct themselves can impact on the local community. In this regard the most significant negative impact is associated with the disruption of existing family structures and social networks. This risk is linked to the potential behaviour of male construction workers, including:

- An increase in alcohol and drug use
- An increase in crime levels
- The loss of girlfriends and or wives to construction workers
- An increase in teenage and unwanted pregnancies
- An increase in prostitution
- An increase in sexually transmitted diseases (STDs)

Solar Capital has indicated that they are committed to implementing a local employment policy, specifically for the low and semi-skilled employment opportunities associated with the construction phase. Employing members from the local community to fill the low-skilled job categories will reduce the risk and mitigate

the potential impacts on the local communities. These workers will be from the local community and form part of the local family and social network and, as such, the potential impact will be low. The use of local residents to fill the low skilled job categories will also reduce the need to house construction workers on the site. In this regard Solar Capital has indicated that no construction personnel will be accommodated on the site. However, due to the potential mismatch of skills and low education levels, the potential employment opportunities for the members from these local communities may be low. However, Kimberly and Douglas are located within 50 km of the site and workers can therefore be transported to and from the site on a daily basis if required.

**Table 4.2: Assessment of impact of construction workers on local communities**

<b>Nature:</b> Potential impacts on family structures and social networks associated with the presence of construction workers		
	<b>Without Mitigation</b>	<b>With Mitigation</b>
<b>Extent</b>	Local (3) (Rated as 3 due to potential severity of impact on local communities)	Local (2) (Rated as 1 due to potential severity of impact on local communities)
<b>Duration</b>	Very Short term for community as a whole (1) Long term-permanent for individuals who may be affected by STD's etc. (5)	Very Short term for community as a whole (1) Long term-permanent for individuals who may be affected by STD's etc. (5)
<b>Magnitude</b>	Low for the community as a whole (4) High-Very High for specific individuals who may be affected by STD's etc. (10)	Low for community as a whole (4) High-Very High for specific individuals who may be affected by STD's etc. (10)
<b>Probability</b>	Probable (3)	Probable (3)
<b>Significance</b>	Low for the community as a whole (24) Moderate-High for specific individuals who may be affected by STD's etc. (57)	Low for the community as a whole (21) Moderate-High for specific individuals who may be affected by STD's etc. (51)
<b>Status</b>	Negative	Negative
<b>Reversibility</b>	No in case of HIV and AIDS	No in case of HIV and AIDS
<b>Irreplaceable loss of resources?</b>	Yes, if people contract HIV/AIDS. Human capital plays a critical role in communities that rely on farming for their livelihoods	
<b>Can impact be mitigated?</b>	Yes, to some degree. However, the risk cannot be eliminated	
<b>Mitigation:</b> See below		
<b>Cumulative impacts:</b> Impacts on family and community relations that may, in some cases, persist for a long period of time. Also in cases where unplanned / unwanted pregnancies occur or members of the community are infected by an STD, specifically HIV and or AIDS, the impacts may be permanent and have long term to permanent cumulative impacts on the affected individuals and/or their families and the community.		

**Residual impacts:** See cumulative impacts.

### **Assessment of No-Go option**

There is no impact as it maintains the current status quo. The potential positive impacts on the local economy associated with the additional spending by construction workers in the local economy will also be lost.

### **Recommended mitigation measures**

The potential risks associated with construction workers can be mitigated. The aspects that should be covered include:

- Where possible, Solar Capital will make it a requirement for contractors to implement a 'locals first' policy for construction jobs, specifically semi and low-skilled job categories. This will reduce the potential impact that this category of worker could have on local family and social networks;
- Solar Capital will consider the establishment of a Monitoring Forum (MF) for the construction phase which should be established before the construction phase commences and should include key stakeholders, including representatives from the local community, local councillors, farmers, and the contractor. The role of the MF would be to monitor the construction phase and the implementation of the recommended mitigation measures. The MF should also be briefed on the potential risks to the local community associated with construction workers;
- Solar Capital and the contractor will, in consultation with representatives from the MF, develop a Code of Conduct for the construction phase. The code should identify what types of behaviour and activities by construction workers are not permitted. Construction workers that breach the code of good conduct should be dismissed. All dismissals must comply with the South African labour legislation;
- Solar Capital and the contractor will implement an HIV/AIDS awareness programme for all construction workers at the outset of the construction phase;
- The movement of construction workers on and off the site should be closely managed and monitored by the contractors. In this regard the contractors should be responsible for making the necessary arrangements for transporting workers to and from site on a daily basis;
- The contractor will make the necessary arrangements for allowing workers from outside the area to return home over weekends and or on a regular basis during the 12 month construction phase. This would reduce the risk posed by construction workers to local family structures and social networks;
- It is recommended that no construction workers, with the exception of security personnel, should be permitted to stay overnight on the site. This will make it possible to manage the potential impacts effectively.

#### **4.4.3 Influx of job seekers to the area**

Large construction projects tend to attract people to the area in the hope that they will secure a job, even if it is a temporary job. These job seekers can in turn become "economically stranded" in the area or decide to stay on irrespective of finding a job or not. As in the case of construction workers employed on the project, the actual presence of job seekers in the area does not in itself constitute a social impact. However, the manner in which they conduct themselves can impact on the local community.

The two main areas of concern are associated with the influx of job seekers:

- Impacts on existing social networks and community structures;
- Competition for housing, specifically low cost housing;
- Competition for scarce jobs;
- Increase in incidences of crime. The concern is that these job seekers may not leave town immediately and, in some cases, may stay indefinitely.

These issues are similar to the concerns associated with the presence of construction workers and are discussed in Section 4.4.2. However, in some instances the potential impact on the community may be greater given that they are unlikely to have accommodation and may decide to stay on in the area. In addition, they will not have a reliable source of income. The risk of crime associated with the influx of job seekers it therefore likely to be greater.

Experience from other projects has also shown that the families of job seekers may also accompany individual job seekers or follow them at a later date. In many cases the families of the job seekers that become “economically stranded” and the construction workers that decided to stay in the area, subsequently moved to the area. The influx of job seekers to the area and their families can also place pressure on the existing services in the area, specifically low income housing. In addition to the pressure on local services the influx of construction workers and job seekers can also result in competition for scarce employment opportunities. Further secondary impacts included increase in crime levels, especially property crime, as a result of the increased number of unemployed people. These impacts can result in increased tensions and conflicts between local residents and job seekers from outside the area.

The key lesson from other large construction projects is the importance of a developing and implementing a well-structured recruitment strategy aimed at employing locals and minimising the number of job seekers moving into the area.

**Table 4.3: Assessment of impact of job seekers on local communities**

<b>Nature:</b> Potential impacts on family structures, social networks and community services associated with the influx of job seekers		
	<b>Without Mitigation</b>	<b>With Mitigation</b>
<b>Extent</b>	Local (3)	Local (2)
<b>Duration</b>	Permanent (5) (For job seekers that stay on the town)	Permanent (5) (For job seekers that stay on the town)
<b>Magnitude</b>	Low for the community as a whole (4) High-Very High for specific individuals who may be affected by STD's etc. (10)	Minor for community as a whole (2) High-Very High for specific individuals who may be affected by STD's etc. (10)
<b>Probability</b>	Probable (3)	Probable (3)
<b>Significance</b>	Medium for the community as a whole (36) Medium -High for specific individuals who may be affected by STD's etc. (54)	Low for the community as a whole (27) Medium-High for specific individuals who may be affected by STD's etc. (51)
<b>Status</b>	Negative	Negative

<b>Reversibility</b>	No in case of HIV and AIDS	No in case of HIV and AIDS
<b>Irreplaceable loss of resources?</b>	Yes, if people contract HIV/AIDS. Human capital plays a critical role in communities that rely on farming for their livelihoods	
<b>Can impact be mitigated?</b>	Yes, to some degree. However, the risk cannot be eliminated	
<b>Mitigation:</b> See below		
<b>Cumulative impacts:</b> Impacts on family and community relations that may, in some cases, persist for a long period of time. Also in cases where unplanned / unwanted pregnancies occur or members of the community are infected by an STD, specifically HIV and or AIDS, the impacts may be permanent and have long term to permanent cumulative impacts on the affected individuals and/or their families and the community.		
<b>Residual impacts:</b> See cumulative impacts.		

### Recommended mitigation measures

It is almost impossible to stop people from coming to the area in search of a job. However, as indicated above, Solar Capital should ensure that the employment criteria favour local residents in the area. In addition Solar Capital should:

- Solar Capital, in consultation with the Siyancuma Local Municipality, should investigate the option of establishing a Local Monitoring Forum to monitor and identify potential problems that may arise due to the influx of job seekers to the area. The Forum should also include the other proponents of solar energy projects in the area;
- Implement a policy that no employment will be available at the gate. This should be linked to the establishment of labour offices and the use of experienced local labour brokers.

#### 4.4.4 Loss of farm labour to the construction phase

Experience from other projects indicates that the loss of farm workers is an issue of concern. In most instances local farmers are unlikely to be in a position to compete with the salaries offered by the solar energy companies during the construction phase. As a result farm labourers may be tempted to resign from their current positions on farms. The loss of skilled and experienced farm labour would have a negative impact on local farmers.

The potential impacts for the affected farmers associated with the loss of permanent farm labour to the construction phase are exacerbated by the security of tenure that permanent farm labourers enjoy in terms of the Extension of Security and Tenure Act (ESTA). Those farm labourers which are eligible under ESTA and who take up jobs during the construction phase will be entitled stay on in their houses on the farms in question. The net effect is that the farmer may have to incur the costs associated with the construction of new dwellings for new labour appointed to replace the labour lost to the construction phase. The farmer may also have to continue subsidizing services such as potable water to people who are no longer in his employ.

The proposed Ramphele PVSEF on its own is however unlikely to result in a significant loss of farm labour. In addition, farm labour can be replaced. The potential impacts on farm operations are therefore likely to be temporary.

The farm workers that take up jobs during the construction phase are also at risk. While some farm workers may be re-employed once the construction has been completed, others may not be so fortunate. The low education levels associated with the farm worker community would effectively mean that alternative employment opportunities outside the agricultural sector will not be accessible to them. These farm workers and their families therefore stand to be negatively impacted upon in the medium to long term.

**Table 4.4: Assessment of loss of farm labour to the construction phase**

<b>Nature:</b> Potential impact on local farmers associated with loss of farm labour to the construction phase		
	<b>Without Mitigation</b>	<b>With Mitigation</b>
<b>Extent</b>	Local and Regional (3)	Local and Regional (3)
<b>Duration</b>	Short term (2) (Assumed that farm labour can be replaced)	Short term (2) (Assumed that farm labour can be replaced)
<b>Magnitude</b>	Low (4)	Low (4)
<b>Probability</b>	Probable (3)	Probable (3)
<b>Significance</b>	Low (27)	Low (27)
<b>Status</b>	Negative	Negative
<b>Reversibility</b>	Yes, if farm workers return of are replaced	Yes, if farm workers return of are replaced
<b>Irreplaceable loss of resources?</b>	No	No
<b>Can impact be mitigated?</b>	Yes, to some degree. However, the risk cannot be eliminated	
<b>Mitigation:</b> See below		
<b>Cumulative impacts:</b> Impacts on farm operations due to loss of experienced farm labour		
<b>Residual impacts:</b> See cumulative impacts.		

#### **Recommended mitigation measures**

While Solar Energy could liaise with local farmers in the area and undertake not to employ farm worker were possible, it is not possible to prevent farm workers from applying for work in other sectors. There are therefore no recommended mitigation measures. Also it is assumed that farm labour can be replaced. The impacts would therefore be temporary.

Farm workers who apply for construction related work should also be informed that the nature of the work is temporary. In addition they should be informed of the potential negative consequences of their actions, which include the potential loss of their permanent farm job.

#### 4.4.5 Increased risk of stock theft, poaching and damage to farm infrastructure

The presence of construction workers on the site increases the potential risk of stock theft and poaching. The movement of construction workers on and off the site also poses a potential threat to farm infrastructure, such as fences and gates, which may be damaged. Stock and game losses may also result from gates being left open and/or fences being damaged.

**Table 4.5: Assessment of impact of stock theft and damage to farm infrastructure**

<b>Nature:</b> Potential loss of livestock, poaching and damage to farm infrastructure associated with the presence of construction workers on site		
	<b>Without Mitigation</b>	<b>With Mitigation</b>
<b>Extent</b>	Local (4) (Rated as 4 due to potential severity of impact on local farmers)	Local (2)
<b>Duration</b>	Very Short Term (1)	Very Short Term (1)
<b>Magnitude</b>	Moderate (6) (Due to reliance on agriculture and livestock for maintaining livelihoods)	Low (4)
<b>Probability</b>	Probable (3)	Probable (3)
<b>Significance</b>	Medium (33)	Low (21)
<b>Status</b>	Negative	Negative
<b>Reversibility</b>	Yes, compensation paid for stock losses etc.	Yes, compensation paid for stock losses etc.
<b>Irreplaceable loss of resources?</b>	No	No
<b>Can impact be mitigated?</b>	Yes	Yes
<b>Mitigation:</b> See below		
<b>Cumulative impacts:</b> No, provided losses are compensated for		
<b>Residual impacts:</b> See cumulative impacts.		

#### Assessment of No-Go option

There is no impact as it maintains the current status quo.

#### Recommended mitigation measures

The mitigation measures that can be considered to address the potential impact on livestock and farm infrastructure include:

- Solar Capital should enter into an agreement with the affected landowners whereby the company will compensate for damages to farm property and disruptions to farming activities. This includes losses associated with stock theft and damage to property etc.;
- Solar Capital should investigate the option of establishing a MF (see above) that includes local farmers and develop a Code of Conduct for construction workers.

Should such a MF be required it should be established prior to commencement of the construction phase. The Code of Conduct should be signed by Solar Capital and the contractors before the contractors move onto site;

- Solar Capital should hold contractors liable for compensating farmers and communities in full for any stock losses and/or damage to farm infrastructure that can be linked to construction workers. This should be contained in the Code of Conduct to be signed between Solar Capital, the contractors and neighbouring landowners. The agreement should also cover losses and costs associated with fires caused by construction workers or construction related activities (see below);
- The EMP must outline procedures for managing and storing waste on site, specifically plastic waste that poses a threat to livestock if ingested;
- Contractors appointed by Solar Capital should ensure that all workers are informed at the outset of the construction phase of the conditions contained on the Code of Conduct, specifically consequences of stock theft and trespassing on adjacent farms.
- Contractors appointed by Solar Capital should ensure that construction workers who are found guilty of stealing livestock, poaching and/or damaging farm infrastructure are dismissed and charged. This should be contained in the Code of Conduct. All dismissals must be in accordance with South African labour legislation;
- The housing of construction workers on the site should be limited to security personnel.

#### **4.4.6 Increased risk of veld fires**

The presence of construction workers and construction-related activities on the site poses an increased risk of veld fires that in turn pose a threat to the livestock, wildlife, and farmsteads in the area. In the process, farm infrastructure may also be damaged or destroyed and human lives threatened.

- The potential risk of veld fires is heightened by windy conditions in the area, specifically during the dry, winter months.
- The dominant agricultural activity in the area is stock farming (beef cattle and sheep). As such, the livelihoods of the farmers in the area are dependent on grazing on their farms. Any loss of grazing due to a fire would therefore impact negatively on the affected farmers livelihoods;
- The risk of fire related damage is exacerbated by the distance to fire-fighting vehicles located in the nearest town of Kimberly.

**Table 4.6: Assessment of impact of increased risk of veld fires**

<b>Nature:</b> Potential loss of livestock, crops and houses, damage to farm infrastructure and threat to human life associated with increased incidence of veld fires		
	<b>Without Mitigation</b>	<b>With Mitigation</b>
<b>Extent</b>	Local (4) (Rated as 4 due to potential severity of impact on local farmers)	Local (2) (Rated as 2 due to potential severity of impact on local farmers)
<b>Duration</b>	Very Short Term (1)	Very Short Term (1)
<b>Magnitude</b>	Moderate-High due to reliance on livestock for maintaining livelihoods (8)	Low-Moderate (6)
<b>Probability</b>	Probable (3)	Probable (3)
<b>Significance</b>	Medium (39)	Low (27)
<b>Status</b>	Negative	Negative
<b>Reversibility</b>	Yes, compensation paid for stock and crop losses etc.	
<b>Irreplaceable loss of resources?</b>	No	No
<b>Can impact be mitigated?</b>	Yes	
<b>Mitigation:</b> See below		
<b>Cumulative impacts:</b> No, provided losses are compensated for.		
<b>Residual impacts:</b> See cumulative impacts.		

**Assessment of No-Go option**

There is no impact as it maintains the current status quo.

**Recommended mitigation measures**

As indicated above, Solar Capital should enter into an agreement with the affected landowners whereby the company will compensate for damages. This includes losses associated veld fires. In addition, the potential increased risk of veld fires can be effectively mitigated. The detailed mitigation measures are outlined in the EMP for the construction and operation phases. The aspects that should be covered include:

- Contractor to ensure that open fires on the site for cooking or heating are not allowed except in designated areas;
- Contractor to ensure that construction related activities that pose a potential fire risk, such as welding, are properly managed and are confined to areas where the risk of fires has been reduced. Measures to reduce the risk of fires include clearing working areas and avoiding working in high wind conditions when the risk of fires is greater. In this regard special care should be taken during the high risk dry, windy winter months;
- Contractor to provide adequate fire fighting equipment on-site;
- Contractor to provide fire-fighting training to selected construction staff;
- As per the conditions of the Code of Good Conduct, in the advent of a fire being caused by construction workers and or construction activities, the appointed contractors must compensate farmers for any damage caused to their farms.

The contractor should also compensate the fire fighting costs borne by farmers and local authorities.

In addition the landowner should also ensure that they join the local fire protection agency.

#### 4.4.7 Impact of construction vehicles

The movement of heavy construction vehicles during the construction phase has the potential to damage roads and create noise, dust, and safety impacts for other road users and local communities in the area, specifically the local farmers that use the R705 to access their farms. Information provided by Solar Capital indicates that ~ access to the site during the construction phase is likely to be via the N12. The impacts on the R705 are therefore likely to be limited. Mr Allan Shergold has however indicated that access to the site both during the construction and operational phase, should be designed to minimise the impact on his farmstead and the farm workers houses. In this regard two alternatives were raised. The first was to use the access to the canal. This access is located ~ 1 km north of the main access to the farm. The second option was to gain access from the R705. In this regard there is a gate located on the north western boundary of the site that can be used to access the site. In order to access the site via this gate a short section (~300m) of Mr Naude's land must be crossed. Mr Naude indicated that this should not be a problem. Of the two options the access from the N12 via the canal road is the preferred option as this option would not require heavy vehicles to travel along the un-surfaced R705. The movement of heavy vehicles along the R705 would result in dust and noise impacts for the houses that are located adjacent to the road.

The impacts associated with the movement of heavy construction vehicles during the construction phase can also be effectively mitigated.

**Table 4.7: Assessment of the impacts associated with construction vehicles**

<b>Nature:</b> Potential noise, dust and safety impacts associated with movement of construction related traffic to and from the site		
	<b>Without Mitigation</b>	<b>With Mitigation</b>
<b>Extent</b>	Local (2)	Local (1)
<b>Duration</b>	Very Short Term (1)	Very Short Term (1)
<b>Magnitude</b>	Low (4)	Minor (2)
<b>Probability</b>	Probable (3)	Probable (3)
<b>Significance</b>	Low (21)	Low (12)
<b>Status</b>	Negative	Negative
<b>Reversibility</b>	Yes	
<b>Irreplaceable loss of resources?</b>	No	No
<b>Can impact be mitigated?</b>	Yes	
<b>Mitigation:</b> See below		
<b>Cumulative impacts:</b> If damage to roads is not repaired then this will affect the farming activities in the area and result in higher maintenance costs for vehicles of local farmers and		

other road users. The costs will be borne by road users who were not responsible for the damage.

**Residual impacts:** See cumulative impacts

### **Assessment of No-Go option**

There is no impact as it maintains the current status quo.

### **Recommended mitigation measures**

As indicated above, Solar Capital should enter into an agreement with the affected landowners whereby the company will compensate for damages. This includes losses associated with damage to local internal farm roads that are affected by the site. In addition, the potential impacts associated with heavy vehicles and dust can be effectively mitigated. The aspects that should be covered include:

- The contractor must ensure that damage caused to roads by the construction related activities, including heavy vehicles, is repaired before the completion of the construction phase. The costs associated with the repair must be borne by the contractor;
- Dust suppression measures must be implemented for heavy vehicles such as wetting of gravel roads on a regular basis and ensuring that vehicles used to transport sand and building materials are fitted with tarpaulins or covers;
- All vehicles must be road-worthy and drivers must be qualified and made aware of the potential road safety issues and need for strict speed limits.

In addition, it is recommended that Solar Capital investigate the option of using the road that accesses the canal off the N12 as the preferred access to the site for both construction and operational phase.

### **4.4.8 Damage to and loss of farmland**

The activities associated with the construction phase have the potential to result in the loss of land available for grazing. However, the farm owner, Mr Shergold, indicated that the proposed project would not have a significant impact on his farming operations as the area identified for the proposed PVSEF. The major farming activities on the farm are associated with centre pivot irrigation in an area to the south west of the proposed PVSEF site. These operations will not be impacted by the proposed PVSEF. In addition, only one landowner is affected and he (Mr Shergold) has entered into lease agreement with Solar Capital. The loss of productive farmland has therefore been offset by the income from the lease agreement. In addition, the final disturbance footprint can also be reduced by careful site design and placement of components. The impact on farmland associated with the construction phase can therefore be mitigated by minimising the footprint of the construction related activities and ensuring that disturbed areas are fully rehabilitated on completion of the construction phase. Recommended mitigation measures are outlined below.

**Table 4.8: Assessment of impact on farmland due to construction related activities**

<b>Nature:</b> The activities associated with the construction phase, such as establishment of access roads and the construction camp, movement of heavy vehicles and preparation of foundations for the PVSEF and power lines will damage farmlands and result in a loss of farmlands for future farming activities.		
	<b>Without Mitigation</b>	<b>With Mitigation</b>
<b>Extent</b>	Local (3)	Local (1)
<b>Duration</b>	Long term-permanent if disturbed areas are not effectively rehabilitated (5)	Short term if damaged areas are rehabilitated (1)
<b>Magnitude</b>	Moderate, due to importance of farming in terms of local livelihoods (4)	Minor (2)
<b>Probability</b>	Definite (5)	Highly Probable (4)
<b>Significance</b>	High (60)	Low (16)
<b>Status</b>	Negative	Negative
<b>Reversibility</b>	Yes, disturbed areas can be rehabilitated	Yes, disturbed areas can be rehabilitated
<b>Irreplaceable loss of resources?</b>	Yes, loss of farmland. However, disturbed areas can be rehabilitated	Yes, loss of farmland. However, disturbed areas can be rehabilitated
<b>Can impact be mitigated?</b>	Yes, however, loss of farmland cannot be avoided	Yes, however, loss of farmland cannot be avoided
<b>Mitigation:</b> See below		
<b>Cumulative impacts:</b> Overall loss of farmland could affect the livelihoods of the affected farmers, their families, and the workers on the farms and their families. However, disturbed areas can be rehabilitated.		
<b>Residual impacts:</b> See cumulative impacts.		

#### **Assessment of No-Go option**

There is no impact as it maintains the current status quo.

#### **Recommended mitigation measures**

The potential impacts associated with damage to and loss of farmland can be effectively mitigated. The aspects that should be covered include:

- The footprint associated with the construction related activities (access roads, construction platforms, workshop etc.) should be minimised;
- An Environmental Control Officer (ECO) should be appointed to monitor the establishment phase of the construction phase;
- All areas disturbed by construction related activities, such as access roads on the site, construction platforms, workshop area etc., should be rehabilitated at the end of the construction phase;
- The implementation of a rehabilitation programme should be included in the terms of reference for the contractor/s appointed. The specifications for the rehabilitation programme should be drawn up the Environmental Consultants appointed to undertake the EIA (Savannah Environmental);

- The implementation of the Rehabilitation Programme should be monitored by the ECO.

#### **4.5 SOCIAL IMPACTS ASSOCIATED WITH OPERATIONAL PHASE**

The key social issues affecting the operational phase include:

##### **Potential positive impacts**

- Creation of employment and business opportunities. The operational phase will also create opportunities for skills development and training;
- The establishment of renewable energy infrastructure.

##### **Potential negative impacts**

- Influx of job seekers to the area;
- Loss of farm workers to jobs associated with the operational phase;
- The visual impacts and associated impact on sense of place;
- Potential impact on tourism.

Annexure C contains the management plan for the addressing social impacts.

##### **4.5.1 Creation of employment and business opportunities**

Based on information provided by Solar Capital the proposed PVSEF will create ~ 55 employment opportunities for over a 25-30 year period. Of this total approximately 80% will be low skilled, 10% medium-skilled and 10% high skilled positions. The proposed facility will therefore create potential employment opportunities in the Northern Cape Province and the Pixley ka Seme, DM, Siyancuma and Sol Plaatjie Municipality. In addition, the majority of the employment opportunities associated with the operational phase is therefore likely to benefit HD members of the community. However, given that the solar energy sector in South Africa is relatively new, the skilled positions may need to be filled by people from other parts of South Africa or even overseas.

It will also be possible to increase the number of local employment opportunities through the implementation of a skills development and training programme linked to the operational phase. Such a programme would support the strategic goals of promoting local employment and skills development contained in the Pixley ka Seme DM IDP.

Given the location of the proposed facility the majority of permanent staff is likely to reside in Ritchie, Modder River and Kimberly. In terms of accommodation options, a percentage of the non-local permanent employees may purchase houses in one of these towns, while others may decide to rent. Both options would represent a positive economic benefit for the region. In addition, a percentage of the monthly wage bill earned by permanent staff would be spent in the regional and local economy, which will benefit local businesses in these towns. The benefits to the local economy will extend over the 20-30year operational lifespan of the project.

The Pixley ka Seme DM Local Economic Development (LED) Manager (Mr Madyo) indicated that proposed establishment of PVSEFs in the area was strongly supported by the Pixley se Kama DM. Mr Buchannan, from the Sol Plaatjie LM also indicated that the proposed PVSEF was strongly supported by the SPLM.

Based on information from other Solar Capital PVSEF projects, 1.5% of project revenue will be allocated to local social and economic development. This amounts to ~ R11 million per annum over the 20 year life of the plant. This revenue will be allocated to local projects, specifically community health (33.3%), local economic development and support of BBBEE initiatives (33.3%) and education (33.3%).

**Table 4.9: Impact assessment of employment and business creation opportunities**

<b>Nature:</b> Creation of employment and business opportunities associated with the operational phase		
	<b>Without Mitigation</b>	<b>With Enhancement</b>
<b>Extent</b>	Local and Regional (2)	Local and Regional (4)
<b>Duration</b>	Long term (4)	Long term (4)
<b>Magnitude</b>	Low (4)	Moderate (6)
<b>Probability</b>	Probable (3)	Definite (5)
<b>Significance</b>	Medium (30)	High (70)
<b>Status</b>	Positive	Positive
<b>Reversibility</b>	N/A	
<b>Irreplaceable loss of resources?</b>	No	
<b>Can impact be enhanced?</b>	Yes	
<b>Enhancement:</b> See below		
<b>Cumulative impacts:</b> Creation of permanent employment and skills and development opportunities for members from the local community and creation of additional business and economic opportunities in the area		
<b>Residual impacts:</b> See cumulative impacts		

#### **Assessment of No-Go option**

There is no impact as it maintains the current status quo. However, the potential opportunity costs in terms of the loss of employment and skills and development training would be lost which would also represent a negative impact.

#### **Recommended enhancement measures**

The enhancement measures listed in Section 4.4.1, i.e. to enhance local employment and business opportunities during the construction phase, also apply to the operational phase. In addition:

- Solar Capital should implement a training and skills development programme for locals during the first 5 years of the operational phase. The aim of the programme should be to maximise the number of South African's and locals employed during the operational phase of the project;
- Solar Capital, in consultation with the Siyancuma LM, should investigate the opportunities for establishing a Community Trust (see above comments). As

indicated above Solar Capital is committed allocating 1.5% of project revenue to local social and economic development. This amounts to ~ R11 million per annum over the 20 year life of the plant.

#### 4.5.2 Development of clean, renewable energy infrastructure

South Africa currently relies on coal-powered energy to meet more than 90% of its energy needs. As a result South Africa is one of the highest per capita producers of carbon emissions in the world and Eskom, as an energy utility, has been identified as the world's second largest producer carbon emissions (Cape Times, 15 November 2007). The establishment of a clean, renewable energy facility will therefore reduce, albeit minimally, South Africa's reliance on coal-generated energy and the generation of carbon emissions into the atmosphere.

The overall contribution to South Africa's total energy requirements of the proposed PVSEF is relatively small. However, the 10 MW produced will help to offset the total carbon emissions associated with energy generation in South Africa. Given South Africa's reliance on Eskom as a power utility, the benefits associated with an IPP based on renewable energy are regarded as an important contribution.

**Table 4.10: Development of clean, renewable energy infrastructure**

<b>Nature:</b> Promotion of clean, renewable energy		
	<b>Without Mitigation</b>	<b>With Mitigation</b> (The provision of renewable energy infrastructure is in itself a mitigation measure)
<b>Extent</b>	Local, Regional and National (4)	Local, Regional and National (4)
<b>Duration</b>	Long term (4)	Long term (4)
<b>Magnitude</b>	Low (4)	Low (4)
<b>Probability</b>	Highly Probable (4)	Highly Probable (4)
<b>Significance</b>	Medium (48)	High (48)
<b>Status</b>	Positive	Positive
<b>Reversibility</b>	Yes	
<b>Irreplaceable loss of resources?</b>	Yes, impact of climate change on ecosystems	
<b>Can impact be mitigated?</b>	Yes	
<b>Enhancement:</b> See below		
<b>Cumulative impacts:</b> Reduce carbon emissions via the use of renewable energy and associated benefits in terms of global warming and climate change.		
<b>Residual impacts:</b> See cumulative impacts		

#### Assessment of No-Go option

The No-Development option would represent a lost opportunity for South Africa to supplement its current energy needs with clean, renewable energy. This would represent a negative opportunity cost.

### **Recommended mitigation measures**

The establishment of the proposed facility is a mitigation measure in itself. In order to maximise the benefits of the proposed project Solar Capital should:

- Use the project to promote and increase the contribution of renewable energy to the national energy supply;
- Maximise the public's exposure to the project via an extensive communication and advertising programme;
- Implement a training and skills development programme for locals during the first 5 years of the operational phase. The aim of the programme should be to maximise the number of South African's employed during the operational phase of the project;

### **4.5.3 Visual impact and impact on sense of place**

The components associated with the proposed facility will have a visual impact and, in so doing, impact on the landscape and rural sense of the place of the area. As indicated previously, the NCPGDS does indicate that the province does have the potential to become the preferred adventure and ecotourism destination in South Africa. Care therefore needs to be taken to ensure that the development of large renewable energy projects not impact on visual character and sense of place of the landscape.

The key findings of the specialist visual impact assessment (VIA) (MetroGIS, October, 2011) are summarized below.

#### **Potential visual impact on users of roads in close proximity to the proposed Solar Energy Facility**

Visual impacts on users of the N12, the R705 and secondary roads within a radius of 3km of the proposed facility are expected to be of **high** significance, both before and after mitigation.

#### **Potential visual impact on residents of homesteads and settlements in close proximity to the proposed Solar Energy Facility**

The visual impact on residents of homesteads and settlements within a radius of 3km of the proposed facility are expected to be of **high** significance, both before and after mitigation.

#### **Potential visual impact on residents of homesteads and settlements in close proximity to the proposed Solar Energy Facility**

The visual impact on residents of homesteads and settlements within a radius of 3km of the proposed facility are expected to be of **high** significance, both before and after mitigation.

#### **Potential visual impact on sensitive visual receptors within the region**

The visual impact users of roads (especially the N12 and the R705), railway lines and residents of homesteads and settlements within the region (i.e. beyond the 3km radius) is expected to be of **moderate** significance, both before and after mitigation.

**Potential visual impact on the heritage landscape within the region**

The visual impact of the facility on the heritage landscape, especially the battlefield of the Battle of Modder River is expected to be of **high** significance, both before and after mitigation.

**Potential visual impact of the proposed facility on the visual character of the landscape and the sense of place of the region**

Despite the proximity to the town of Ritchie, the landscape of the study area is characterised by wide open spaces, agriculture and little urban or industrial development. The quality of the visual environment characterising the site, and in the area surrounding the site is considered high. In this respect, the anticipated visual impact of the facility on the visual character of the landscape, and by implication, on the sense of place, is expected to be of **moderate** significance, both before and after mitigation.

In conclusion, the VIA notes that the anticipated visual impacts listed above (i.e. post mitigation impacts) range from high to low. Despite the persistence of high significance visual impacts even after mitigation, none of these are considered to be fatal flaws for the proposed solar energy facility.

**Table 4.11: Visual impact and impact on sense of place**

<b>Nature:</b> Visual impact associated with the proposed solar facility and the potential impact on the areas rural sense of place.		
	<b>Without Mitigation</b>	<b>With Mitigation</b>
<b>Extent</b>	Local (4)	Local (4)
<b>Duration</b>	Long term (4)	Long term (4)
<b>Magnitude</b>	Moderate (6)	Moderate (6)
<b>Probability</b>	Highly Probable (4)	Highly Probable (4)
<b>Significance</b>	Medium (56)	Medium (56)
<b>Status</b>	Negative	Negative
<b>Reversibility</b>	Yes, solar facility can be removed.	
<b>Irreplaceable loss of resources?</b>	No	
<b>Can impact be mitigated?</b>	Yes	
<b>Enhancement:</b> See below		
<b>Cumulative impacts:</b> Potential impact on current rural sense of place		
<b>Residual impacts:</b> See cumulative impacts		

**Assessment of No-Go option**

There is no impact as it maintains the current status quo.

**Recommended mitigation measures**

The recommendations contained in the VIA should be implemented.

#### 4.5.4 Impact on tourism

The NCPGDS notes that the sustainable utilisation of the natural resource base on which agriculture depends is critical in the Northern Cape with its fragile ecosystems and vulnerability to climatic variation. The document also indicates that due to the provinces exceptional natural and cultural attributes, it has the potential to become the preferred adventure and ecotourism destination in South Africa. Therefore caution must be taken to ensure that the development of large renewable energy projects, such as the proposed solar energy facility, do not affect the tourism potential of the Province.

In terms of current tourism activities, the N12 provides access to a number of important Boer War sites, including Magersfontein and Modder River battle sites. There is also a memorial to the Queens Own Light Infantry located adjacent to the R705, immediately to the north of the site. The R705 also provides an alternative access to the Mokala National Park which is located approximately 50 km west of the site, near Douglas

However, based on the findings of the site visit, the proposed facility is not likely to impact on the tourism activities in the area or the tourism sector in the area or the Province. In terms of local impacts, the area in the vicinity of the site has been altered by farming related commercial activities, such as farm supplier etc. In addition the site is located adjacent to the Ritchie substation and the chicken broilers on Mr Delpport's property. The significance of this issue is therefore rated as low negative. In some instances the plant may also attract tourists to the area. However, the significance of this potential benefit is also rated as low positive.

The findings of the VIA indicate that the anticipated visual impact of the facility on existing tourist routes, as well as on the tourism potential of the region, is expected to be **low to moderate**. In this regard the VIA notes that the facility will impact on the on the N12, which is recognised and well used tourist route linking Johannesburg with Kimberley and Cape Town. In addition, a railway line carrying upmarket tourist trains bypasses the site on the eastern side of the N12.

**Table 4.12: Impact on tourism**

Nature: Potential impact of the PVSEF on local tourism		
	Without Mitigation	With Enhancement / Mitigation
<b>Extent</b>	Local (2)	Local (3)
<b>Duration</b>	Long term (4)	Long term (4)
<b>Magnitude</b>	Low (2)	Low (2)
<b>Probability</b>	Probable (3)	Probable (3)
<b>Significance</b>	Low (24) (Applies to both – and +)	Low (27) (Applies to both – and +)
<b>Status</b>	Negative (Potential to distract from the tourist experience of the area) Positive (Potential to attract people to the area)	Negative (Potential to distract from the tourist experience of the area) Positive (Potential to attract people to the area)

<b>Reversibility</b>	Yes	
<b>Irreplaceable loss of resources?</b>	No	
<b>Can impact be enhanced?</b>	Yes	
<b>Enhancement:</b> See below		
<b>Cumulative impacts:</b> Potential negative and or positive impact on tourism in the Kai! Garib Municipality Area.		
<b>Residual impacts:</b> See cumulative impacts		

### Assessment of No-Go option

The No-Development option would represent a lost opportunity to create a facility that has the potential to attract visitors to the area. This would represent a negative opportunity cost.

### Recommended enhancement measures

In terms of mitigating the visual impacts, it is virtually impossible to hide the facility. The impact on the sense of place of the area cannot therefore be effectively mitigated. In terms of efforts to enhance the proposed benefits to tourism:

- Solar Capital should liaise with representatives from the Siyancuma LM and local tourism representatives to raise awareness of the proposed facility;
- Solar Capital should investigate the option of establishing a renewable energy interpretation centre at entrance to the site. The centre should include a viewing area where passing visitors can stop and view the site;
- In order to maximise the benefits of the interpretation centre to the broader community, it is recommended that the information on the project and solar energy be presented in the three main languages of the Northern Cape Province, namely Afrikaans, English and Setswana.
- 

## 4.6 ASSESSMENT POWER LINE OPTIONS

The proposed facility includes the establishment of an overhead power line linking the facility to the Ritchie substation which is located adjacent to the site. The social impact of the power line will be low due to the proximity of the Ritchie substation and the existence of existing power lines on the site.

The findings of the VIA indicate that the visual impact associated with the new power line is rated to be of **low** significance after mitigation. In this regard the VIA notes that the existing lines represent an existing visual intrusion, and as such, the potential visual impact of the new line will be 'absorbed' somewhat. The anticipated visual impact resulting from the new overhead power line is therefore likely to be of **low** significance both before and after mitigation.

**Table 4.15: Assessment of transmission line options**

<b>Nature:</b> Potential visual impact and impact on sense of place associated with power lines		
	<b>Without Mitigation</b>	<b>With Mitigation</b>
<b>Extent</b>	Local (2)	Local (1)
<b>Duration</b>	Long term (4)	Long term (4)
<b>Magnitude</b>	Minor (2)	Minor (2)
<b>Probability</b>	Probable (3)	Probable (3)
<b>Significance</b>	Low (24)	Low (21)
<b>Status</b>	Negative	Negative
<b>Reversibility</b>	Yes	
<b>Irreplaceable loss of resources?</b>	No	
<b>Can impact be mitigated?</b>	Yes	
<b>Enhancement:</b> See below		
<b>Cumulative impacts:</b> Limited visual and impact on sense of place		
<b>Residual impacts:</b> See cumulative impacts		

**Assessment of No-Go option**

There is no impact as it maintains the current status quo.

**Recommended mitigation measures**

The recommendations contained in the VIA should be implemented. The measures listed above to address the potential impacts associated with the construction phase also apply to the construction of the power line.

**4.7 POTENTIAL HEALTH IMPACTS**

The primary environmental, health, and safety issues associated with solar energy involve how they are manufactured, installed, and ultimately disposed of. In particular, the manufacturing of photovoltaic cells often requires hazardous materials such as arsenic and cadmium. Even relatively inert silicon, a major material used in solar cells, can be hazardous to workers if it is breathed in as dust. Workers involved in manufacturing photovoltaic modules and components must consequently be protected from exposure to these materials. However, none of these potential hazards is much different in nature and or magnitude from the innumerable hazards people face routinely in an industrial society. Through effective regulation, the dangers can very likely be kept at a very low level. In addition, the relevant risks essentially concern workers at the cell manufacturing plant and therefore fall outside the scope of the EIA.

#### 4.8 ASSESSMENT OF NO-DEVELOPMENT OPTION

As indicated above, South Africa currently relies on coal-powered energy to meet more than 90% of its energy needs. As a result South Africa is one of the highest per capita producers of carbon emissions in the world and Eskom, as an energy utility, has been identified as the world's second largest producer carbon emissions (Cape Times, 15 November 2007).

The No-Development option would represent a lost opportunity for South Africa to supplement its current energy needs with clean, renewable energy. Given South Africa's position as one of the highest per capita producer of carbon emissions in the world, this would represent a high negative social cost.

The No-Development option would also result in a loss in employment opportunities associated with both the construction and operational phase. In addition the revenue for community development would also be forfeited. This would also represent a high negative social cost.

**Table 4.16: Assessment of no-development option**

<b>Nature:</b> The no-development option would result in the lost opportunity for South Africa to supplement its current energy needs with clean, renewable energy		
	<b>Without Mitigation</b>	<b>With Mitigation</b>
<b>Extent</b>	Local-International (5)	Local-International (5)
<b>Duration</b>	Long term (4)	Long term (4)
<b>Magnitude</b>	Moderate (6)	Moderate (6)
<b>Probability</b>	Highly Probable (4)	Highly Probable (4)
<b>Significance</b>	High (60)	High (60)
<b>Status</b>	Negative	Positive
<b>Reversibility</b>	Yes	
<b>Irreplaceable loss of resources?</b>	Yes, impact of climate change on ecosystems	
<b>Can impact be mitigated?</b>	Yes	
<b>Enhancement:</b> See below		
<b>Cumulative impacts:</b> Reduce carbon emissions via the use of renewable energy and associated benefits in terms of global warming and climate change.		
<b>Residual impacts:</b> See cumulative impacts		

#### **Recommended enhancement measures**

The proposed facility should be developed and the mitigation and enhancement measures identified in the SIA and other specialist studies should be implemented. However, the impact of large solar facilities on the sense of place and landscape are issues need to be addressed in the location, design and layout of the proposed plant.

#### 4.9 ASSESSMENT OF CUMULATIVE IMPACTS

Although there appear to be no guidelines for solar facilities, the Australian Wind Farm Development Guidelines (Draft, July 2010) indicate that the cumulative impact of multiple wind farm facilities is likely to become an increasingly important issue for wind farm developments in Australia. This finding is also likely to apply to PVSEFs and is also likely to be the case in South Africa. The key concerns in terms of cumulative impacts are, as in the case of wind farms, also likely to be linked to visual impacts and the impact on rural, undeveloped landscapes.

The Scottish Natural Heritage (2005) describes a range of potential cumulative landscape impacts associated with wind farms on landscapes. These issues raised in these guidelines as to what defines a cumulative impact are also regarded as pertinent to solar facilities, specifically given that the key issue of concern is likely to relate to the impact on rural, undeveloped landscapes. The relevant issues raised in the by Scottish Natural Heritage include:

- Combined visibility (whether two or more wind farms (solar facilities) will be visible from one location).
- Sequential visibility (e.g. the effect of seeing two or more wind farms (solar facilities) along a single journey, e.g. road or walking trail).
- The visual compatibility of different wind farms (solar facilities) in the same vicinity.
- Perceived or actual change in land use across a character type or region.
- Loss of a characteristic element (e.g. viewing type or feature) across a character type caused by developments across that character type.

The guidelines also note that cumulative impacts need to be considered in relation to dynamic as well as static viewpoints. The experience of driving along a tourist road, for example, needs to be considered as a dynamic sequence of views and visual impacts, not just as the cumulative impact of several developments on one location. The viewer may only see one wind farm (solar facility) at a time, but if each successive stretch of the road is dominated by views of a wind farm (solar facility), then that can be argued to be a cumulative visual impact (National Wind Farm Development Guidelines, DRAFT - July 2010). It is reasonable to assume that these issues will also apply to PVSEFs.

Research on wind farms undertaken by Warren and Birnie (2009) also highlights the visual and cumulative impacts on landscape character. The paper notes that given that aesthetic perceptions are a key determinant of people's attitudes, and that these perceptions are subjective, deeply felt and diametrically contrasting, it is not hard to understand why the arguments become so heated. Because landscapes are often an important part of people's sense of place, identity and heritage, perceived threats to familiar vistas have been fiercely resisted for centuries. The paper also identifies two factors that important in shaping people's perceptions of wind farms' landscape impacts. The first of these is the cumulative impact of increasing numbers of wind farms (Campbell, 2008). The research found that if people regard a region as having 'enough' wind farms already, then they may oppose new proposals. The second factor is the cultural context. This relates to peoples perception and relationship with the landscape. In the South African context, the majority of South Africans have a strong connection with and affinity for the large, undisturbed open spaces that are characteristic of the South African landscape. The concerns raised with regard to wind farms and the impact on landscapes are also likely to apply to solar facilities.

The impact of solar facilities on the landscape is therefore likely to be a key issue in South Africa, specifically given South African's strong attachment to the land and the growing number of solar plant applications.

However, based on the findings of the site visit, the proposed facility is not likely to have a significant cumulative impact on the areas sense of place and character. This is largely due to the existence of the Ritchie substation and associated power lines. The significance of this issue is therefore rated as low negative.

**Table 4.17: Cumulative impacts on sense of place and the landscape**

<b>Nature:</b> Visual impacts associated with the establishment of more than one PVSEF and the potential impact on the areas rural sense of place and character of the landscape.		
	<b>Without Mitigation</b>	<b>With Mitigation</b>
<b>Extent</b>	Local and regional (2)	Local and regional (2)
<b>Duration</b>	Long term (4)	Long term (4)
<b>Magnitude</b>	Minor (2)	Minor (2)
<b>Probability</b>	Probable (3)	Probable (3)
<b>Significance</b>	Low (24)	Low (24)
<b>Status</b>	Negative	Negative
<b>Reversibility</b>	Yes. Solar energy plant components and other infrastructure can be removed.	
<b>Irreplaceable loss of resources?</b>	No	
<b>Can impact be mitigated?</b>	Yes	
<b>Enhancement:</b> See below		
<b>Cumulative impacts:</b> Impact on other activities whose existence is linked to linked to rural sense of place and character of the area, such as tourism, bird watching, and hunting.		
<b>Residual impacts:</b> See cumulative impacts		

**Assessment of No-Go option**

There is no impact as it maintains the current status quo.

**Recommended mitigation measures**

The establishment of a number of large solar facilities in the area does have the potential to have a negative cumulative impact on the areas sense of place and the landscape. The environmental authorities should consider the overall cumulative impact on the rural character and the areas sense of place before a final decision is taken with regard to the optimal number of such plants in an area.

#### **4.10 ASSESSMENT OF DECOMMISSIONING PHASE**

Typically, the major social impacts associated with the decommissioning phase are linked to the loss of jobs and associated income. This has implications for the households who are directly affected, the communities within which they live, and the relevant local authorities. However, in the case of the proposed facility the decommissioning phase is likely to involve the disassembly and replacement of the existing components with more modern technology. This is likely to take place in the 25 - 30 years post commissioning. The decommissioning phase is therefore likely to create additional, construction type jobs, as opposed to the jobs losses typically associated with decommissioning.

Given the relatively small number of people employed during the operational phase (~55), decommissioning of the facility is unlikely to have a negative social impact on the local community. In addition, the potential impacts associated with the decommissioning phase can also be effectively managed with the implementation of a retrenchment and downscaling programme. With mitigation, the impacts are assessed to be Low (negative).

##### **Recommended mitigation measures**

The following mitigation measures are recommended:

- Solar Capital should investigate the option of relocating employees to other solar facilities when the plant is decommissioned;
- Solar Capital should ensure that retrenchment packages are provided for all staff who stand to lose their jobs when the plant is decommissioned;
- All structures and infrastructure associated with the proposed facility should be dismantled and transported off-site on decommissioning;
- Solar Capital should investigate the option of establishing an Environmental Rehabilitation Trust Fund to cover the costs of decommissioning and rehabilitation of disturbed areas. The Trust Fund should be funded by a percentage of the revenue generated from the sale of energy to the national grid over the 30 year operational life of the facility. The rationale for the establishment of a Rehabilitation Trust Fund is linked to the experiences with the mining sector in South Africa and failure of many mining companies to allocate sufficient funds during the operational phase to cover the costs of rehabilitation and closure.

---

## **SECTION 5: KEY FINDINGS AND RECOMMENDATIONS**

---

### **5.1 INTRODUCTION**

Section 5 lists the key findings of the study and recommendations. These findings are based on:

- A review of the issues identified during the Scoping Process
- A review of key planning and policy documents pertaining to the area
- Semi-structured interviews with interested and affected parties
- A review of social and economic issues associated with similar developments
- A review of selected specialist studies undertaken as part of the EIA
- A review of relevant literature on social and economic impacts
- The experience of the authors with other renewable energy projects in South Africa

### **5.2 SUMMARY OF KEY FINDINGS**

The key findings of the study are summarised under the following sections:

- Fit with policy and planning
- Construction phase impacts
- Operational phase impacts
- Cumulative Impacts
- Decommissioning phase impacts
- No-development option

The section also comments on the potential health impacts associated with solar facilities.

#### **5.2.1 Policy and planning issues**

The key documents reviewed included:

- The National Energy Act (2008);
- The White Paper on the Energy Policy of the Republic of South Africa (December 1998);
- The White Paper on Renewable Energy (November 2003);
- Integrated Resource Plan (IRP) for South Africa (2010-2030);
- Northern Cape Provincial Growth and Development Strategy (2004-2014)
- Pixley ka Seme District Municipality Integrated Development Plan 2009-2012;
- Siyancuma Local Municipality Integrated Development Plan 2010;

The findings of the review indicated that solar energy is strongly supported at a national, provincial, and local level. Based on this the establishment of the proposed Ramphele PVSEF is supported by the relevant policy and planning documentation.

## 5.2.2 Construction phase

The key social issues associated with the construction phase include:

### Potential positive impacts

- Creation of employment and business opportunities, and the opportunity for skills development and on-site training.

The construction phase is expected to extend over a period of 12 months and create approximately 750 employment opportunities at peak construction. It is anticipated that approximately 80% (600) of the employment opportunities will be available to low skilled (construction labourers, security staff etc.), 10% (75) to semi-skilled workers (drivers, equipment operators etc.) and 10% (75) to skilled personnel (engineers, land surveyors, project managers etc.). The majority of the employment opportunities, specifically the skilled and semi-skilled opportunities, are likely to be available to local residents in the area, specifically residents from Ritchie, Douglas and Kimberly. The majority of the beneficiaries are likely to be historically disadvantaged (HD) members of the community. This would represent a significant positive social benefit in an area with limited employment opportunities. However, the low education and skills levels in the area will hamper potential opportunities for local communities.

The total wage bill for the 12 month construction phase will be in the region of R 35 million. The injection of income into the area in the form of rental for accommodation and wages will create opportunities for local businesses in De Aar Britstown and Hanover. The sector of the local economy that is most likely to benefit from the proposed development is the local service industry. The potential opportunities for the local service sector would be linked to accommodation, catering, cleaning, transport and security, etc. associated with the construction workers on the site. The benefits to the local economy will however be confined to the construction period (6-12 months).

In terms of training, the proponent has indicated that they have linked up with a local South African University to establish a Solar Academy to address the issue of skills development and training. The contractors appointed during the construction phase are also likely to provide on-site training and skills development opportunities. However, the majority of benefits are likely to accrue to personnel employed by the relevant contractors. In the absence of specific commitments from the developer to employ local contractors the potential for meaningful skills development and training for members from the local communities may be limited.

### Potential negative impacts

- Impacts associated with the presence of construction workers on site
- Influx of job seekers to the area;
- Loss of farm labour to the construction phase;
- Increased risk of stock theft, poaching and damage to farm infrastructure associated with presence of construction workers on the site
- Increased risk of veld fires associated with construction-related activities
- Threat to safety and security of farmers associated with the presence of construction workers on site
- Impact of heavy vehicles, including damage to roads, safety, noise and dust
- Potential loss of grazing land associated with construction-related activities.

The significance of the potential negative impacts with mitigation was assessed to be of Low significance. The majority of the potential negative impacts can therefore be effectively mitigated if the recommended mitigation measures are implemented. In addition, given that the majority of the low and semi-skilled construction workers can be sourced from the local area the potential risk to local family structures and social networks is regarded as low. However, the impact on individuals who are directly impacted on by construction workers and or job seekers (i.e. contract HIV/AIDS) was assessed to be of Medium-High negative significance.

Table 5.1 summarises the significance of the impacts associated with the construction phase.

**Table 5.1: Summary of social impacts during construction phase**

<b>Impact</b>	<b>Significance No Mitigation</b>	<b>Significance With Mitigation</b>
<b>Creation of employment and business opportunities</b>	Low (Positive impact)	High (Positive impact)
<b>Presence of construction workers and potential impacts on family structures and social networks</b>	Low (Negative impact for community as a whole) Medium-High (Negative impact of individuals)	Low (Negative impact for community as a whole) Medium-High (Negative impact of individuals)
<b>Influx of job seekers</b>	Low (Negative impact for community as a whole) Medium-High (Negative impact of individuals)	Low (Negative impact for community as a whole) Medium-High (Negative impact of individuals)
<b>Loss of farm labour</b>	Low (Negative impact)	Low (Negative impact)
<b>Risk of stock theft, poaching and damage to farm infrastructure</b>	Medium (Negative impact)	Low (Negative impact)
<b>Risk of veld fires</b>	Medium (Negative impact)	Low (Negative impact)
<b>Impact of heavy vehicles and construction activities</b>	Low (Negative impact)	Low (Negative impact)
<b>Loss of farmland</b>	High (Negative impact)	Low (Negative impact)

### 5.2.3 Operational phase

The key social issues affecting the operational phase include:

#### **Potential positive impacts**

- Creation of employment and business opportunities. The operational phase will also create opportunities for skills development and training;
- The establishment of infrastructure to generate renewable energy.

The total number of permanent employment opportunities is estimated to be in the region of 55. Of this total ~ 90% (50) fall within the low and semi-skilled category. The majority of the beneficiaries are therefore likely to be historically disadvantaged (HD) members of the community. Given the location of the proposed facility the majority of permanent staff is likely to come from Ritchie and Kimberly.

The proposed development also represents an investment in infrastructure for the generation of clean, renewable energy, which, given the challenges created by climate change, represents a Positive High social benefit for society as a whole.

Based on information from other Solar Capital PVSEF projects, 1.5% of project revenue will also be allocated to local social and economic development. This amounts to ~ R11 million per annum over the 20 year life of the plant. This revenue will be allocated to local projects, specifically community health (33.3%), local economic development and support of BBBEE initiatives (33.3%) and education (33.3%).

**Potential negative impacts**

- The visual impacts and associated impact on sense of place;
- Potential impact on tourism.

The visual impacts on landscape character associated with large renewable energy facilities, such as PVSEFs, are highlighted in the research undertaken by Warren and Birnie (2009). In the South African context, the majority of South Africans have a strong connection with and affinity for the large, undisturbed open spaces that are characteristic of the South African landscape. The impact of large, solar energy plants on the landscape is therefore likely to be a key issue in South Africa, specifically given South African’s strong attachment to the land and the growing number of solar energy applications.

The significance of the impacts associated with the operational phase are summarised in Table 5.2.

**Table 5.2: Summary of social impacts during operational phase**

<b>Impact</b>	<b>Significance No Mitigation</b>	<b>Significance With Mitigation</b>
<b>Creation of employment and business opportunities</b>	Medium (Positive impact)	High (Positive impact)
<b>Promotion of renewable energy projects</b>	Medium (Positive impact)	High (Positive impact)
<b>Visual impact and impact on sense of place</b>	Medium (Negative impact)	Medium (Negative impact)
<b>Impact on tourism</b>	Low (Positive and Negative)	Low (Positive and Negative)

**5.2.4 Assessment of cumulative impacts**

The cumulative impacts associated with solar energy facilities, such as the proposed Ramphela PVSEF, are largely linked to the impact on sense of place and visual impacts. In the case of the proposed Ramphela PVSEF the significance of the

potential cumulative social impacts, specifically the impact on the landscape, was rated to be low.

However, it is recommended that the environmental authorities consider the overall cumulative impact on the rural character and the areas sense of place before a final decision is taken with regard to the optimal number of PVSEFs in the area. In addition, the siting and number of individual components of the plant should be informed by findings of the relevant VIAs, specifically with respect to the visual impact on farmsteads and important roads in the area.

### **5.2.5 Transmission line options**

The findings of the SIA indicate that the impacts associated with the proposed overhead power lines will be low.

### **5.2.6 Potential health impacts**

The primary environmental, health, and safety issues associated with solar energy involve how they are manufactured, installed, and ultimately disposed of. In particular, the manufacturing of photovoltaic cells often requires hazardous materials such as arsenic and cadmium. Even relatively inert silicon, a major material used in solar cells, can be hazardous to workers if it is breathed in as dust. Workers involved in manufacturing photovoltaic modules and components must consequently be protected from exposure to these materials. However, none of these potential hazards is much different in nature and or magnitude from the innumerable hazards people face routinely in an industrial society. Through effective regulation, the dangers can very likely be kept at a very low level. In addition, the relevant risks essentially concern workers at the cell manufacturing plant and therefore fall outside the scope of the EIA.

### **5.2.7 Assessment of no-development option**

The No-Development option would represent a lost opportunity for South Africa to supplement its current energy needs with clean, renewable energy. Given South Africa's position as one of the highest per capita producer of carbon emissions in the world, this would represent a High negative social cost.

The no-development option also represents a lost opportunity in terms of the employment and business opportunities (construction and operational phase), and revenue for community programmes. This also represents a negative social cost.

### **5.2.8 Decommissioning phase**

Typically, the major social impacts associated with the decommissioning phase are linked to the loss of jobs and associated income. This has implications for the households who are directly affected, the communities within which they live, and the relevant local authorities. However, in the case of the PVSEFs decommissioning phase is likely to involve the disassembly and replacement of the existing components with more modern technology. This is likely to take place in the 25-30 years post commissioning. The decommissioning phase is therefore likely to create additional, construction type jobs, as opposed to the jobs losses typically associated with decommissioning.

Given the small number of people employed during the operational phase (~55), decommissioning of the facility will not have a significant negative social impact on the local community. In addition, the potential impacts associated with the decommissioning phase can also be effectively managed with the implementation of a retrenchment and downscaling programme. With mitigation, the impacts are assessed to be Low (negative).

Solar Capital should also investigate the option of establishing an Environmental Rehabilitation Trust Fund to cover the costs of decommissioning and rehabilitation of disturbed areas. The Trust Fund should be funded by a percentage of the revenue generated from the sale of energy to the national grid over the 25-30 year operational life of the facility. The rationale for the establishment of a Rehabilitation Trust Fund is linked to the experiences with the mining sector in South Africa and failure of many mining companies to allocate sufficient funds during the operational phase to cover the costs of rehabilitation and closure.

### **5.3 CONCLUSIONS AND RECOMMENDATIONS**

The findings of the SIA indicate that the development of the proposed Ramphele PVSEF will create employment and business opportunities for locals during both the construction and operational phase of the project. The mitigation measures listed in the report should be implemented in order to enhance them. Solar Capital has also indicated that 1.5% of project revenue will be allocated to local social and economic development. This amounts to ~ R11 million per annum over the 20 year life of the plant. This represents a significant and sustained source of income for local social and economic development.

The proposed development also represents an investment in clean, renewable energy infrastructure, which, given the challenges created by climate change, represents a positive social benefit for society as a whole. The establishment of the proposed Ramphele PVSEF is therefore supported by the findings of the SIA.

However, the potential impacts associated with large, solar energy facilities on an areas sense of place and landscape cannot be ignored. These impacts are an issue that will need to be addressed by the relevant environmental authorities, specifically given the large number of applications for solar facilities that have been submitted over the last 12 months.

### **5.4 IMPACT STATEMENT**

The findings of the SIA undertaken for the proposed Ramphele PVSEF indicate that the development will create employment and business opportunities for locals during both the construction and operational phase of the project. The proposed development also represents an investment in clean, renewable energy infrastructure, which, given the challenges created by climate change, represents a positive social benefit for society as a whole.

However, the visual impacts associated with facility will impact on the areas rural sense of place and landscape character. This impact will be for the entire operational lifespan (approximately 25-30 years) of the facility. The potential for cumulative

impacts also exists due to the large number of applications for solar energy facilities in the area. However, these impacts are not considered to represent a fatal flaw. It is therefore recommended that the facility as proposed be supported, subject to the implementation of the recommended mitigation measures and management actions contained in the report.

## ANNEXURE A

### REFERENCES

#### Interviews

- Mr B Buchannan, Sol Plaatjie Municipality; 6/10/2011;
- Mr S Mr D Lang, Sol Plaatjie Municipality; 6/10/2011;
- Mr S Madyo, LED Manager Pixely ka Seme DM, 6/10/2011;
- Mr A Naude, adjacent land owner, 5/10/2011;
- Mr A Shergold, Landowner, 05/10/2011;
- Ms D Martin, Northern Cape Tourism, 06/10/2011.

#### Printed sources

- Australian Environment Protection and Heritage Council (EPHC), *National Wind Farm Development Guidelines* DRAFT - July 2010;
- Barbour and Rogatschnig (April, 2011). *Social Impact Assessment for Ramphele PVSEF*. Prepared for Savannah Environmental;
- MetroGIS (Pty) Ltd. Visual Impact Assessment Proposed *Ramphele* PVSEF (September, 2011).
- Integrated Resource Plan (IRP) for South Africa (2010-2030);
- Northern Cape Provincial Growth and Development Strategy (2004-2014);
- Pixley ka Seme District Municipality Integrated Development Plan (IDP) (2009-2012)
- Republic of South Africa. The National Energy Act (2008);
- Republic of South Africa (December 1998). *White Paper on Energy Policy*.
- Republic of South Africa (2003). *White Paper on Renewable Energy*.
- Sol Plaatjie Local Municipality Integrated Development Plan (IDP) (2010);
- Warren, Charles R. and Birnie, Richard V.(2009) 'Re-powering Scotland: Wind Farms and the 'Energy or Environment? Debate', *Scottish Geographical Journal*, 125: 2, 97 — 126;
- The National Energy Act (2008);
- The White Paper on the Energy Policy of the Republic of South Africa (December 1998);
- The White Paper on Renewable Energy (November 2003);

#### Internet sources

- [www.demarcation.org.za](http://www.demarcation.org.za) (Census 2001 data).
- Google Earth 2009.

## ANNEXURE B

### METHODOLOGY FOR THE ASSESSMENT OF POTENTIAL IMPACTS

Direct, indirect and cumulative impacts of the above issues, as well as all other issues identified will be assessed in terms of the following criteria:

- The **nature**, which shall include a description of what causes the effect, what will be affected and how it will be affected.
- The **extent**, where it will be indicated whether the impact will be local (limited to the immediate area or site of development), regional, national or international. A score between 1 and 5 will be assigned as appropriate (with a score of 1 being low and a score of 5 being high).
- The **duration**, where it will be indicated whether:
  - \* the lifetime of the impact will be of a very short duration (0–1 years) – assigned a score of 1;
  - \* the lifetime of the impact will be of a short duration (2-5 years) - assigned a score of 2;
  - \* medium-term (5–15 years) – assigned a score of 3;
  - \* long term (> 15 years) - assigned a score of 4; or
  - \* permanent - assigned a score of 5.
- The **magnitude**, quantified on a scale from 0-10, where a score is assigned:
  - \* 0 is small and will have no effect on the environment;
  - \* 2 is minor and will not result in an impact on processes;
  - \* 4 is low and will cause a slight impact on processes;
  - \* 6 is moderate and will result in processes continuing but in a modified way;
  - \* 8 is high (processes are altered to the extent that they temporarily cease); and
  - \* 10 is very high and results in complete destruction of patterns and permanent cessation of processes.
- The **probability of occurrence**, which shall describe the likelihood of the impact actually occurring. Probability will be estimated on a scale, and a score assigned:
  - \* Assigned a score of 1–5, where 1 is very improbable (probably will not happen);
  - \* Assigned a score of 2 is improbable (some possibility, but low likelihood);
  - \* Assigned a score of 3 is probable (distinct possibility);
  - \* Assigned a score of 4 is highly probable (most likely); and
  - \* Assigned a score of 5 is definite (impact will occur regardless of any prevention measures).
- The **significance**, which shall be determined through a synthesis of the characteristics described above (refer formula below) and can be assessed as low, medium or high.
- The **status**, which will be described as either positive, negative or neutral.
- The *degree* to which the impact can be *reversed*.
- The *degree* to which the impact may cause *irreplaceable loss of resources*.
- The *degree* to which the impact can be *mitigated*.

The **significance** is determined by combining the criteria in the following formula:

$S=(E+D+M)P$ ; where

S = Significance weighting

E = Extent

D = Duration

M = Magnitude

P = Probability

The **significance weightings** for each potential impact are as follows:

- < 30 points: Low (i.e. where this impact would not have a direct influence on the decision to develop in the area),
- 30-60 points: Medium (i.e. where the impact could influence the decision to develop in the area unless it is effectively mitigated),
- > 60 points: High (i.e. where the impact must have an influence on the decision process to develop in the area).

## ANNEXURE C

### ENVIRONMENTAL MANAGEMENT PLAN: SIA

#### CONSTRUCTION PHASE

##### Creation of employment and business opportunities

**OBJECTIVE: Maximise local employment and business opportunities associated with the construction phase.**

<b>Project component/s</b>	Construction and establishment activities associated with the establishment of the PVSEF, including infrastructure etc.	
<b>Potential Impact</b>	The opportunities and benefits associated with the creation of local employment and business should be maximised.	
<b>Activity/risk source</b>	The employment of outside contractors to undertake the work and who make use of their own labour will reduce the employment and business opportunities for locals. Employment of local labour will maximise local employment opportunities.	
<b>Mitigation: Target/Objective</b>	Solar Capital, in discussions with the Siyancuma Municipality, should aim to employ a minimum of 80% of the low-skilled workers from the local area. This should also be made a requirement for all contractors. Solar Capital should also develop a database of local BEE service providers	
<b>Mitigation: Action/control</b>	<b>Responsibility</b>	<b>Timeframe</b>
<ul style="list-style-type: none"> <li>Attempt to employ a minimum of 80% of the low-skilled workers are sourced from the local area;</li> <li>Where required, implement appropriate training and skills development programmes prior to the initiation of the construction phase to ensure that 80% target is met.</li> <li>Skills audit to be undertaken to determine training and skills development requirements;</li> <li>Develop a database of local BEE service providers and ensure that they are informed of tenders and job</li> </ul>	<ul style="list-style-type: none"> <li>Solar Capital &amp; contractors</li> <li>Solar Capital</li> <li>Solar Capital</li> <li>Solar Capital</li> </ul>	<ul style="list-style-type: none"> <li>Employment and business policy document that sets out local employment targets to be in place before construction phase commences.</li> <li>Where required, training and skills development programmes to be initiated prior to the initiation of the construction phase.</li> <li>Skills audit to determine need for training and skills development programme undertaken within 1 month of commencement of construction phase commences.</li> <li>Database of potential local</li> </ul>

opportunities; • Identify opportunities businesses	potential for local	• Solar Capital	BEE services providers to be completed before construction phase commences.
<b>Performance Indicator</b>	<ul style="list-style-type: none"> <li>• Employment and business policy document that sets out local employment and targets completed before construction phase commences;</li> <li>• 80% of semi and unskilled labour locally sourced.</li> <li>• Database of potential local BEE services providers in place before construction phase commences.</li> <li>• Skills audit to determine need for training and skills development programme undertaken within 1 month of commencement of construction phase.</li> </ul>		
<b>Monitoring</b>	<ul style="list-style-type: none"> <li>• Solar Capital and or appointed ECO must monitor indicators listed above to ensure that they have been met for the construction phase.</li> </ul>		

### Impact associated with presence of construction workers

**OBJECTIVE: Avoid the potential impacts on family structures and social networks associated with presence of construction workers from outside the area**

<b>Project component/s</b>	Construction and establishment activities associated with the establishment of the PVSEF, including infrastructure etc.		
<b>Potential Impact</b>	The presence of construction workers who live outside the area and who are housed in local towns can affect family structures and social networks.		
<b>Activity/risk source</b>	The presence of construction workers can impact negatively on family structures and social networks, especially in small, rural communities.		
<b>Mitigation: Target/Objective</b>	To avoid and or minimise the potential impact of construction workers on the local community. This can be achieved by maximising the number of locals employed during the construction phase and minimising the number of workers housed on the site.		
<b>Mitigation: Action/control</b>	<b>Responsibility</b>	<b>Timeframe</b>	
<ul style="list-style-type: none"> <li>• Attempt to ensure that a minimum of 80% of the low-skilled workers are sourced from the local area. This should be included in the tender documents. Construction workers should be recruited from the local area in and around the towns of De Aar, Britstown, and Hanover.</li> <li>• Local construction workers</li> </ul>	<ul style="list-style-type: none"> <li>• Solar Capital and contractors</li> </ul>	<ul style="list-style-type: none"> <li>• Identify suitable local contractors prior to the tender process for the construction phase.</li> <li>• Tender documents for contractors include conditions set out in SIA, including transport of workers home over weekends, transportation of workers home on completion of</li> </ul>	

<p>should be able to provide proof of having lived in the area for five years or longer.</p> <ul style="list-style-type: none"> <li>• Identify local contractors who are qualified to undertake the required work.</li> <li>• Consider establishing a Monitoring Forum (MF) consisting of representatives from the local community, local police, local farming community and the contractor prior to the commencement of the construction phase.</li> <li>• Develop a Code of Conduct to cover the activities of the construction workers housed on the site.</li> <li>• Ensure that construction workers housed attend a brief session before they commence activities. The aim of the briefing session is to inform them of the rules and regulations governing activities on the site as set out in the Code of Conduct.</li> <li>• Ensure that all workers are informed at the outset of the construction phase of the conditions contained on the Code of Conduct.</li> <li>• Ensure that construction workers who are found guilty of breaching the Code of Conduct are dismissed. All dismissals must be in accordance with South African labour legislation.</li> <li>• Provide opportunities for workers to go home over weekends. The cost of transporting workers home over weekends and back to the site should be borne by the contractors.</li> <li>• On completion of the construction phase all construction workers must be transported back to their</li> </ul>	<ul style="list-style-type: none"> <li>• Solar Capital</li> <li>• Solar Capital</li> <li>• Solar Capital</li> <li>• SOLAR Capital and contractors</li> <li>• SOLAR Capital and contractors</li> <li>• Contractors</li> <li>• Contractors</li> <li>• Contractors</li> <li>• Contractors</li> </ul>	<p>construction phase, establishment of MF etc,</p> <ul style="list-style-type: none"> <li>• MF established before construction phase commences.</li> <li>• Code of Conduct drafted before construction phase commences.</li> <li>• Briefing session for construction workers held before they commence work on site.</li> </ul>
--	---	--

	place of origin within two days of their contract ending. The costs of transportation must be borne by the contractor.		
<b>Performance Indicator</b>	<ul style="list-style-type: none"> <li>• Employment policy and tender documents that sets out local employment and targets completed before construction phase commences;</li> <li>• 80% of semi and unskilled labour locally sourced;</li> <li>• Local construction workers employed have proof that they have lived in the area for five years or longer;</li> <li>• Tender documents for contractors include recommendations for construction camp;</li> <li>• MF set up prior to implementation of construction phase;</li> <li>• Code of Conduct drafted before commencement of construction phase;</li> <li>• Briefing session with construction workers held at outset of construction phase;</li> </ul>		
<b>Monitoring</b>	<ul style="list-style-type: none"> <li>• SOLAR Capital and or appointed ECO must monitor indicators listed above to ensure that they have been met for the construction phase.</li> </ul>		

### Safety, poaching, stock theft and damage to farm infrastructure

**OBJECTIVE: To avoid and or minimise the potential impact of the activities during the construction on the safety of local communities and the potential loss of stock and damage to farm infrastructure.**

<b>Project component/s</b>	Construction and establishment activities associated with the establishment of the PVSEF, including infrastructure etc.		
<b>Potential Impact</b>	Impact on safety of farmers and communities (increased crime etc) and potential loss of livestock due to stock theft by construction workers and also damage to farm infrastructure, such as gates and fences.		
<b>Activity/risk source</b>	The presence of construction workers on the site can pose a potential safety risk to local farmers and communities and may also result in stock thefts. The activities of construction workers may also result in damage to farm infrastructure.		
<b>Mitigation: Target/Objective</b>	To avoid and or minimise the potential impact on local communities and their livelihoods.		
<b>Mitigation: Action/control</b>	<b>Responsibility</b>	<b>Timeframe</b>	
<ul style="list-style-type: none"> <li>• The housing of construction workers on the site should be limited to security personnel.</li> <li>• Consider establishing a MF with the adjacent farmers and develop a Code of Conduct for construction workers.</li> </ul>	<ul style="list-style-type: none"> <li>• SOLAR Capital and contractors</li> <li>• Solar Capital</li> </ul>	<ul style="list-style-type: none"> <li>• Establish MF before construction phase commences.</li> <li>• Develop Code of Conduct prior to commencement of construction phase. The Code of Conduct should be signed by Solar Capital and the contractors before the</li> </ul>	

<ul style="list-style-type: none"> <li>• Inform all workers of the conditions contained in the Code of Conduct.</li> <li>• Dismiss all workers that do not adhere to the code of conduct for workers. All dismissals must be in accordance with South African labour legislation.</li> <li>• Compensate farmers / community members at full market related replacement cost for any losses, such as livestock, damage to infrastructure etc.</li> </ul>	<ul style="list-style-type: none"> <li>• SOLAR Capital and contractor</li> <li>• Contractors</li> <li>• Contractors</li> </ul>	<ul style="list-style-type: none"> <li>• contractors move onto site;</li> <li>• Inform all construction workers of Code of Conduct requirements before construction phase commences.</li> <li>• Compensate farmers / community members within 1 month of claim being verified by Solar Capital and or Contractor/s.</li> </ul>
<b>Performance Indicator</b>	<ul style="list-style-type: none"> <li>• Community MF in place before construction phase commences.</li> <li>• Code of Conduct developed and approved prior to commencement of construction phase.</li> <li>• All construction workers made aware of Code of Conduct within first week of being employed.</li> <li>• Compensation claims settled within 1 month of claim being verified by Community MF.</li> </ul>	
<b>Monitoring</b>	<ul style="list-style-type: none"> <li>• SOLAR CAPITAL and or appointed ECO must monitor indicators listed above to ensure that they have been met for the construction phase.</li> </ul>	

### Increase risk of veld fires

**OBJECTIVE: To avoid and or minimise the potential risk of increased veld fires during the construction phase.**

<b>Project component/s</b>	Construction and establishment activities associated with the establishment of PVSEF, including infrastructure etc.	
<b>Potential Impact</b>	Veld fires can pose a personal safety risk to local farmers and communities, and their homes, crops, livestock and farm infrastructure, such as gates and fences.	
<b>Activity/risk source</b>	The presence of construction workers and their activities on the site can increase the risk of veld fires.	
<b>Mitigation: Target/Objective</b>	To avoid and or minimise the potential risk of veld fires on local communities and their livelihoods.	
<b>Mitigation: Action/control</b>	<b>Responsibility</b>	<b>Timeframe</b>
<ul style="list-style-type: none"> <li>• Ensure that open fires on the site for cooking or heating are not allowed except in designated areas.</li> <li>• Provide adequate fire fighting equipment onsite.</li> <li>• Provide fire-fighting training</li> </ul>	<ul style="list-style-type: none"> <li>• Solar Capital and contractors</li> <li>• Solar Capital and</li> </ul>	<ul style="list-style-type: none"> <li>• Ensure that these conditions are included in the Construction Phase EMP.</li> <li>• Ensure that designated areas for fires are identified on site at the outset of the construction phase.</li> </ul>

<ul style="list-style-type: none"> <li>to selected construction staff.</li> <li>Compensate farmers / community members at full market related replacement cost for any losses, such as livestock, damage to infrastructure etc.</li> <li>Join Fire Protection Agency</li> </ul>	<ul style="list-style-type: none"> <li>contractors</li> <li>Contractors</li> <li>Contractors</li> </ul>	<ul style="list-style-type: none"> <li>Ensure that fire fighting equipment and training is provided before the construction phase commences.</li> <li>Compensate Farmers within 1 month of claim being verified by MF.</li> </ul>
<b>Performance Indicator</b>	<ul style="list-style-type: none"> <li>Conditions contained in the Construction EMP.</li> <li>Designated areas for fires identified on site at the outset of the construction phase.</li> <li>Fire fighting equipment and training provided before the construction phase commences.</li> <li>Compensation claims settled within 1 month of claim being verified by Community MF.</li> </ul>	
<b>Monitoring</b>	<ul style="list-style-type: none"> <li>Solar Capital and or appointed ECO must monitor indicators listed above to ensure that they have been met for the construction phase.</li> </ul>	

### Impact of dust and noise due to heavy vehicles and damage to roads

**OBJECTIVE: To avoid and or minimise the potential impacts of safety, noise and dust and damage to roads caused by construction vehicles during the construction phase.**

<b>Project component/s</b>	Construction and establishment activities associated with the establishment of the PVSEF, including infrastructure etc.	
<b>Potential Impact</b>	Heavy vehicles can generate noise and dust impacts. Movement of heavy vehicles can also damage roads.	
<b>Activity/risk source</b>	The movement of heavy vehicles and their activities on the site can result in noise and dust impacts and damage roads.	
<b>Mitigation: Target/Objective</b>	To avoid and or minimise the potential noise and dust impacts associated with heavy vehicles, and minimise damage to roads.	
<b>Mitigation: Action/control</b>	<b>Responsibility</b>	<b>Timeframe</b>
<ul style="list-style-type: none"> <li>Implement dust suppression measures for heavy vehicles such as wetting roads on a regular basis and ensuring that vehicles used to transport sand and building materials are fitted with tarpaulins or covers.</li> <li>Ensure that all vehicles are road-worthy, drivers are qualified and are made aware of the potential noise, dust and safety issues.</li> </ul>	<ul style="list-style-type: none"> <li>Contractors</li> <li>Contractors</li> </ul>	<ul style="list-style-type: none"> <li>Ensure that these conditions are included in the Construction Phase EMP.</li> <li>Ensure that dust suppression measures are implemented for all heavy vehicles that require such measures during the construction phase commences.</li> <li>Ensure that drivers are made aware of the potential safety issues and enforcement of strict speed limits when they</li> </ul>

<ul style="list-style-type: none"> <li>• Ensure that drivers adhere to speed limits. Vehicles should be fitted with recorders to record when vehicles exceed the speed limit.</li> <li>• Ensure that damage to roads is repaired before completion of construction phase;</li> <li>• Consider option of using rail to transport material from Port Elizabeth to De Aar.</li> </ul>	<ul style="list-style-type: none"> <li>• Contractors</li> <li>• Contractors</li> <li>• Solar Capital</li> </ul>	<ul style="list-style-type: none"> <li>• are employed.</li> <li>• Fit all heavy vehicles with speed monitors before they are used in the construction phase.</li> <li>• Assess road worthy status of heavy vehicles at the outset of the construction phase and on a monthly basis thereafter;</li> <li>• Ensure that damage to roads is repaired before completion of construction phase.</li> </ul>
<b>Performance Indicator</b>	<ul style="list-style-type: none"> <li>• Conditions included in the Construction Phase EMP.</li> <li>• Dust suppression measures implemented for all heavy vehicles that require such measures during the construction phase commences.</li> <li>• Drivers made aware of the potential safety issues and enforcement of strict speed limits when they are employed.</li> <li>• All heavy vehicles equipped with speed monitors before they are used in the construction phase.</li> <li>• Road worthy certificates in place for all heavy vehicles at outset of construction phase and up-dated on a monthly basis.</li> </ul>	
<b>Monitoring</b>	<ul style="list-style-type: none"> <li>• Solar Capital and or appointed ECO must monitor indicators listed above to ensure that they have been met for the construction phase.</li> </ul>	

## Impact on farming activities

**OBJECTIVE: To avoid and or minimise the potential impact on current and future farming activities during the construction phase.**

<b>Project component/s</b>	Construction phase activities associated with the establishment of the PVSEF and associated infrastructure.	
<b>Potential Impact</b>	The footprint of the solar energy plant and associated infrastructure will result in a loss of land that will impact on farming activities on the site.	
<b>Activity/risk source</b>	The footprint taken up by the solar energy plant and associated infrastructure.	
<b>Mitigation: Target/Objective</b>	To minimise the loss of land taken up by the PVSEF and associated infrastructure and to enable farming activities to continue where possible, specifically grazing.	
<b>Mitigation: Action/control</b> <ul style="list-style-type: none"> <li>• Minimise the footprint of the PVSEF and the associated infrastructure.</li> <li>• Rehabilitate disturbed areas on completion of the</li> </ul>	<b>Responsibility</b> <ul style="list-style-type: none"> <li>• Contractor and Solar Capital</li> <li>• ECO and Contractors</li> </ul>	<b>Timeframe</b> <ul style="list-style-type: none"> <li>• Footprint for PVSEF should be defined in the Construction EMP before construction phase commences.</li> </ul>

<p>construction phase. Details of the rehabilitation programme should be contained in the EMP.</p>		<ul style="list-style-type: none"> <li>• Rehabilitation should be ongoing and completed within 3 months of the completion of the construction phase.</li> <li>• Meeting/s with local farmers to discuss lease options should take place during the construction phase.</li> </ul>
<p>Performance Indicator</p>	<ul style="list-style-type: none"> <li>• Footprint of PVSEF included in the Construction Phase EMP.</li> <li>• Meeting/s held with farmers during construction phase.</li> </ul>	
<p>Monitoring</p>	<ul style="list-style-type: none"> <li>• ECO must monitor indicators listed above to ensure that they have been met for the construction phase.</li> </ul>	

## OPERATIONAL PHASE

### Creation of employment and business opportunities

**OBJECTIVE: Maximise local employment and business opportunities associated with the operational phase.**

<b>Project component/s</b>	Day to day operational activities associated with the PVSEF, including maintenance etc.	
<b>Potential Impact</b>	The opportunities and benefits associated with the creation of local employment and business should be maximised	
<b>Activity/risk source</b>	The operational phase of the PVSEF will create approximately 30 full time employment opportunities.	
<b>Mitigation: Target/Objective</b>	In the medium to long term employ as many locals as possible to fill the full time employment opportunities.	
<b>Mitigation: Action/control</b>	<b>Responsibility</b>	<b>Timeframe</b>
<ul style="list-style-type: none"> <li>The entire workforce of 60 - 80 permanent staff will be based in local towns of De Aar, Britstown and Hanover. Solar Capital should commit to implementing a 5-year training and skills development and training programme. The initial local content target is 30%, however, after 5 years the objective is to have all the employment opportunities taken up by locals.</li> <li>Identify local members of the community who are suitably qualified or who have the potential to be employed full time.</li> </ul>	<ul style="list-style-type: none"> <li>Solar Capital</li> <li>Solar Capital</li> </ul>	<ul style="list-style-type: none"> <li>Develop 5 year training and skills development programme during the construction phase</li> <li>Identify local members of the community who are suitably qualified or who have the potential to be employed full time during the construction phase.</li> </ul>
<b>Performance Indicator</b>	<ul style="list-style-type: none"> <li>5 year training and skills development programme developed and designed before construction phase completed.</li> <li>Potential locals identified before construction phase completed.</li> </ul>	
<b>Monitoring</b>	<ul style="list-style-type: none"> <li>Solar Capital must monitor indicators listed above to ensure that they have been met for the operational phase.</li> </ul>	

## DECOMMISSIONING PHASE

### Impact of decommissioning

**OBJECTIVE: To avoid and or minimise the potential impacts associated with the decommissioning phase.**

<b>Project component/s</b>	Decommissioning phase of the PVSEF		
<b>Potential Impact</b>	Decommissioning will result in job losses, which in turn can result in a number of social impacts, such as reduced quality of life, stress, depression etc. However, the number of people affected (55) is relatively small. Decommissioning is also similar to the construction phase in that it will also create temporary employment opportunities.		
<b>Activity/risk source</b>	Decommissioning of the PVSEF		
<b>Mitigation: Target/Objective</b>	To avoid and or minimise the potential social impacts associated with decommissioning phase of the PVSEF.		
<b>Mitigation: Action/control</b>	<b>Responsibility</b>	<b>Timeframe</b>	
<ul style="list-style-type: none"> <li>Retrenchments should comply with South African Labour legislation of the day</li> </ul>	<ul style="list-style-type: none"> <li>Solar Capital</li> </ul>	<ul style="list-style-type: none"> <li>When PVSEF is decommissioned</li> </ul>	
<b>Performance Indicator</b>	<ul style="list-style-type: none"> <li>South African Labour legislation relevant at the time</li> </ul>		
<b>Monitoring</b>	<ul style="list-style-type: none"> <li>Solar Capital and Department of Labour</li> </ul>		